

ROUTE NO.	SECTION	COUNTY	TOTAL SHEETS	SHEET NO.
CH 31	*	MACON	162	29
STA.	TO STA.			
FED. RD. DIST. NO. 7	ILLINOIS PROJECT			

DATE	BY

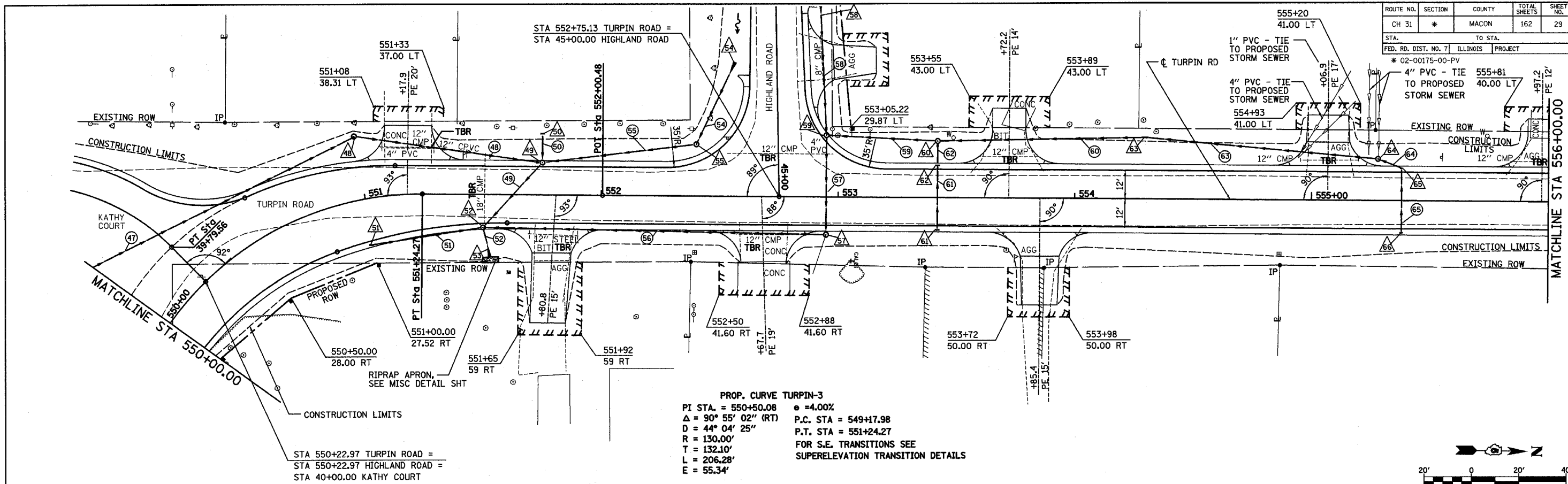
PLAN
SURVEYED, ALIGNED, GRADES CHECKED, RT. OF WAY CHECKED.
NOTED BOOK NO. _____

DECATUR 0317 429-4644
CHICAGO 0729 714-0060

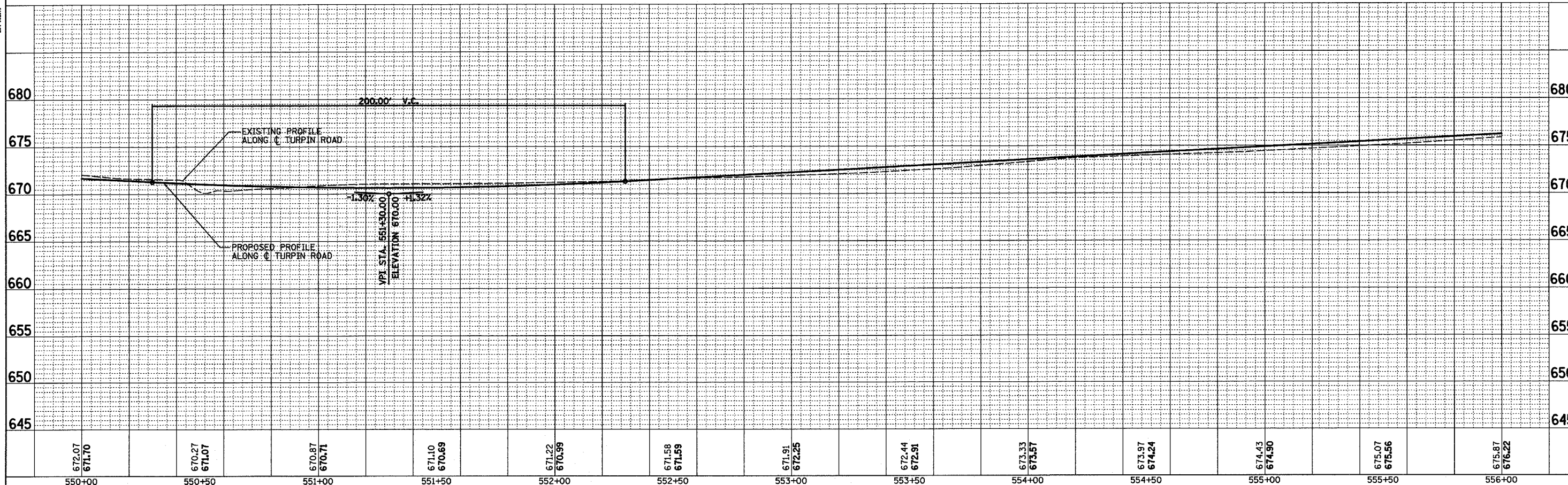
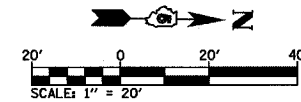
ROMER L. CHASTAIN & ASSOCIATES, L.P.
CONSULTING ENGINEERS
384-0887

DATE	BY

PROFILE
SURVEYED, GRADES CHECKED, STRUCTURE NOTATIONS OK'D.
NOTED BOOK NO. _____



PROP. CURVE TURPIN-3
 PI STA. = 550+50.08 e = 4.00%
 Δ = 90° 55' 02" (RT) P.C. STA = 549+17.98
 D = 44° 04' 25" P.T. STA = 551+24.27
 R = 130.00' FOR S.E. TRANSITIONS SEE
 T = 132.10' SUPERELEVATION TRANSITION DETAILS
 L = 206.28'
 E = 55.34'



STA 550+00 TO STA 556+00