

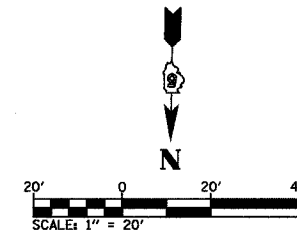
ROUTE NO.	SECTION	COUNTY	TOTAL SHEETS	SHEET NO.
CH 31	*	MACON	162	39
STA.		TO STA.		
FED. RD. DIST. NO. 7		ILLINOIS PROJECT		

\* 02-00175-00-PV

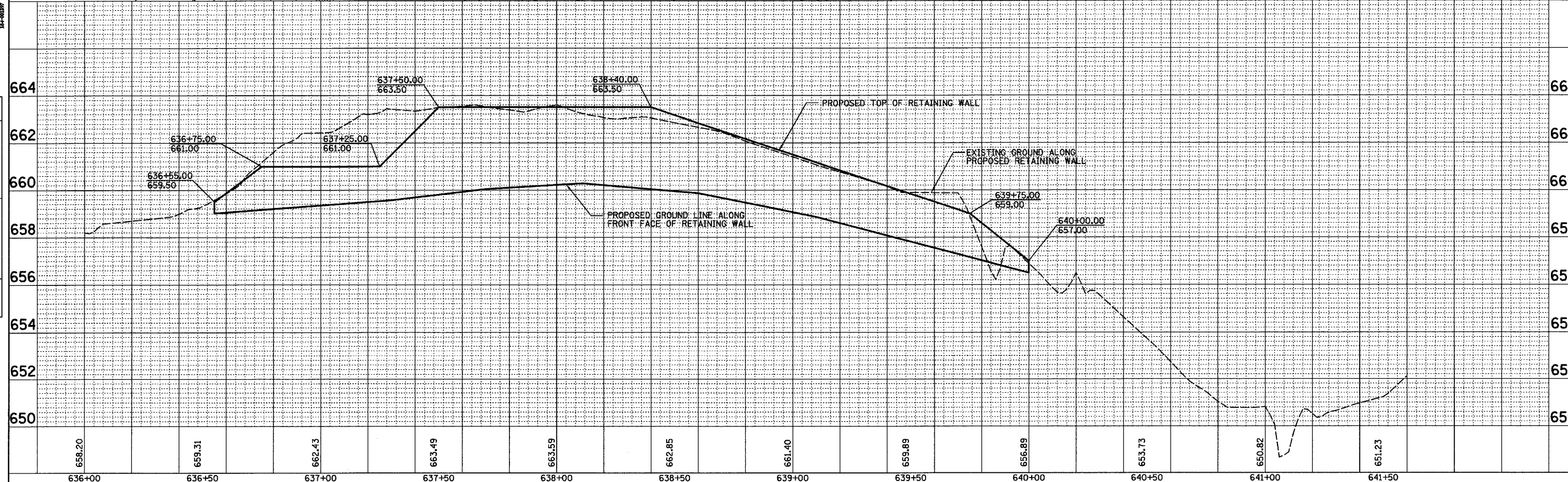
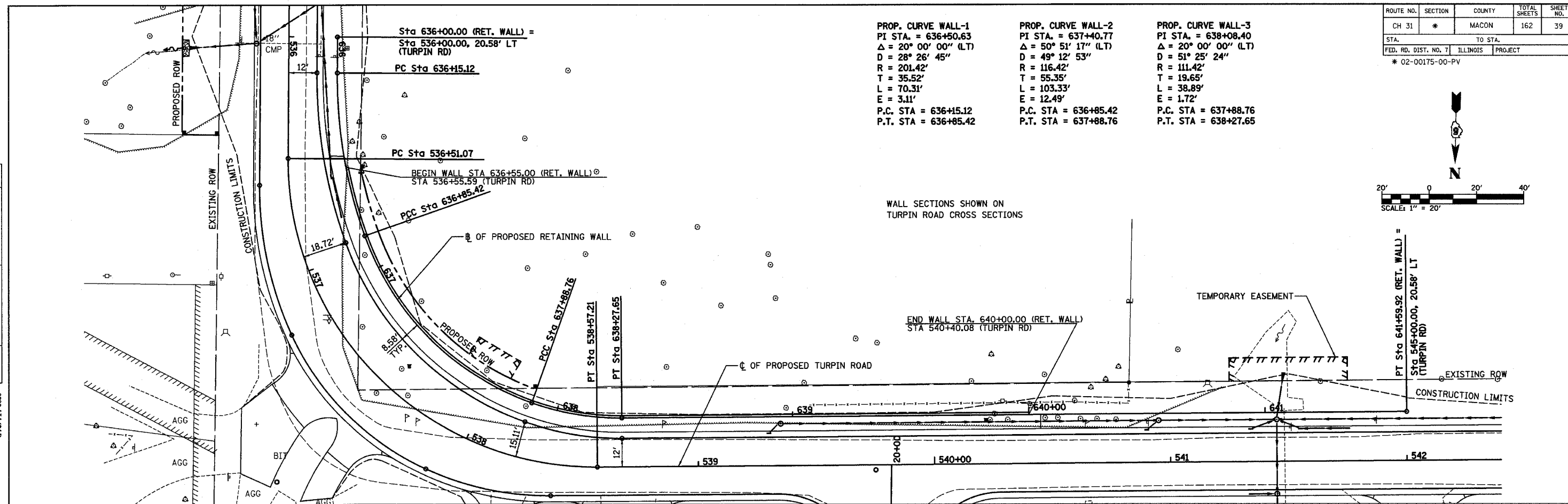
**PROP. CURVE WALL-1**  
 PI STA. = 636+50.63  
 $\Delta = 20^\circ 00' 00''$  (LT)  
 $D = 28^\circ 26' 45''$   
 $R = 201.42'$   
 $T = 35.52'$   
 $L = 70.31'$   
 $E = 3.11'$   
 P.C. STA = 636+15.12  
 P.T. STA = 636+85.42

**PROP. CURVE WALL-2**  
 PI STA. = 637+40.77  
 $\Delta = 50^\circ 51' 17''$  (LT)  
 $D = 49^\circ 12' 53''$   
 $R = 116.42'$   
 $T = 55.35'$   
 $L = 103.33'$   
 $E = 12.49'$   
 P.C. STA = 636+85.42  
 P.T. STA = 637+88.76

**PROP. CURVE WALL-3**  
 PI STA. = 638+08.40  
 $\Delta = 20^\circ 00' 00''$  (LT)  
 $D = 51^\circ 25' 24''$   
 $R = 111.42'$   
 $T = 19.65'$   
 $L = 38.89'$   
 $E = 1.72'$   
 P.C. STA = 637+88.76  
 P.T. STA = 638+27.65



WALL SECTIONS SHOWN ON TURPIN ROAD CROSS SECTIONS



STA 636+00 TO STA 641+59.92 RETAINING WALL

DECATUR

DATE	BY

PLAN

NO.	DATE	BY

CHICAGO

DATE	BY

PROFILE

NO.	DATE	BY

0317 429-8644  
0779 714-0050

**HOMER L. CHASTAIN & ASSOCIATES, L.P.**  
 CONSULTING ENGINEERS  
 144-0007

NO.	DATE	BY