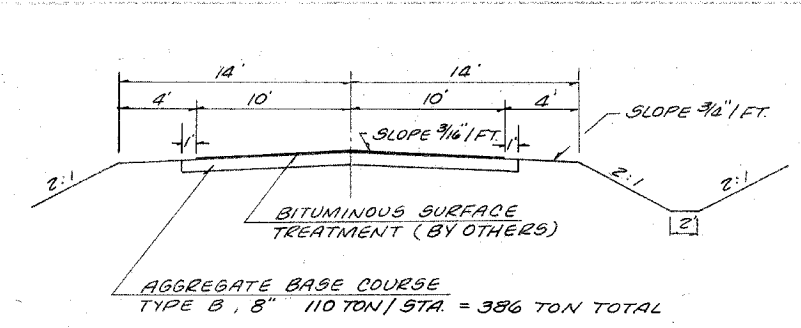
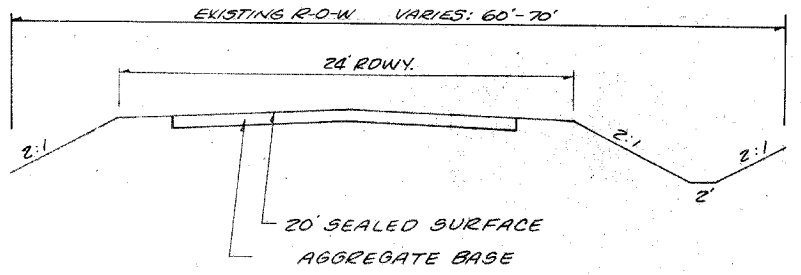


SECTION	99-0123-00-BR	TOTAL SHEETS	11	SHEET NO.	2
COUNTY	CUMBERLAND	ROAD DIST.	COTTONWOOD	STA.	0+00 TO STA. 10+00

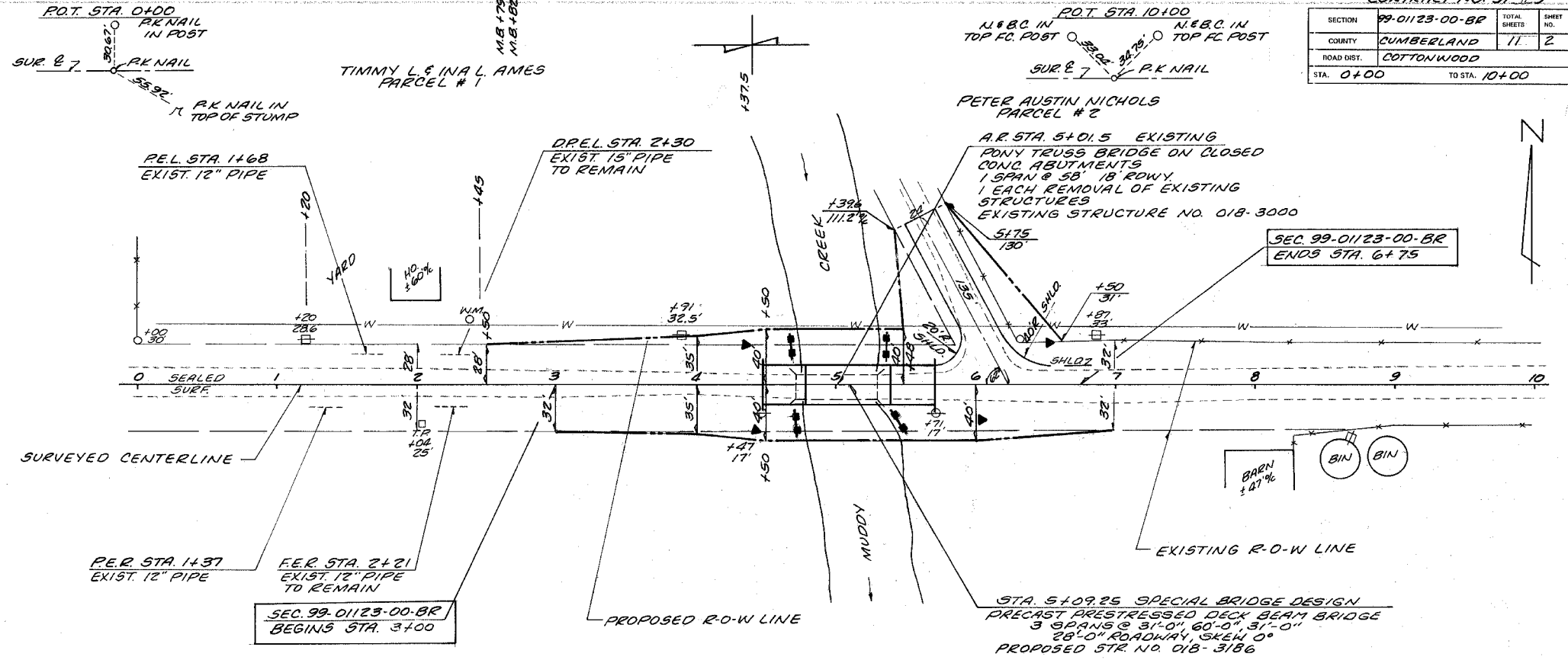


TYPICAL CROSS SECTION OF PROPOSED IMPROVEMENT

FUNCTIONAL CLASSIFICATION - LOCAL ROAD
CURRENT ADT = 200



TYPICAL CROSS SECTION OF EXISTING ROAD



CONSTRUCT TRANSITION
FROM EXIST. ROWY TO PROP. ROWY.
STA. 2+50 STA. 3+00
STA. 6+75 STA. 7+25
QUANTITIES INCLUDED IN THOSE LISTED

EARTHWORK SCHEDULE
EARTH EXCAVATION = 37 CU. YD.
EARTH EXCAVATION ADJUSTED 25% = 28 CU. YD.
CHANNEL EXCAVATION = 593 CU. YD.
CHANNEL EXCAVATION ADJUSTED 25% = 445 CU. YD.
EMBANKMENT = 1306 CU. YD.
FURNISHED EXCAVATION = 833 CU. YD.

B.M. #1 ELEV. 593.07
N.E.W. IN POWER POLE
32.5 LT. STA. 3+91

TREE REMOVAL, ACRES
RT. STA. 3+00 TO STA. 4+80 = 0.15 AC.
RT. STA. 5+40 TO STA. 7+00 = 0.15 AC.
TOTAL = 0.30 AC.

SEEDING, CLASS 2 (SPECIAL)
STA. 2+50 TO 7+25 = 0.80 ACRE

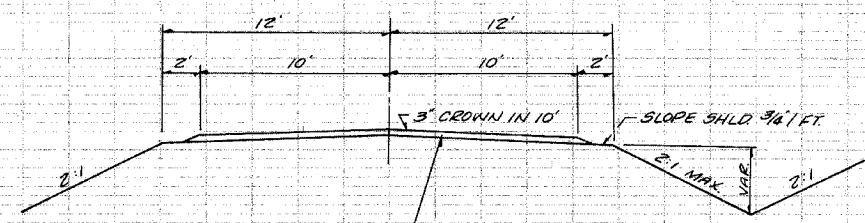
TRAFFIC BARRIER TERMINAL TYPE SA
1 @ EACH CORNER OF BRIDGE = 2 EACH *

TRAFFIC BARRIER TERMINAL TYPE 1, SPECIAL (TANGENT)
N.W., S.W., & S.E. CORNER OF BRIDGE = 3 EACH

STEEL PLATE BEAM GUARDRAIL, TYPE B
FROM END OF TYPE SA, STA. 5+71 TO END
20' RADIUS = 37.5 FOOT
(NOTE 9'-0" ON TANGENT & 28'-6" ON RADIUS)
1 END SECTION (COST INCIDENTAL)

* TY SA @ N.E. CORNER ON 20' RADIUS

TERMINAL MARKER - DIRECT APPLIED
N.W., S.W. & S.E. CORNERS OF BRIDGE = 3 EACH



TYPICAL CROSS SECTION OF PROPOSED SIDEWALK

UTILITIES

TELEPHONE: VERIZON NORTH
212 EAST GROVE
KANTOUL, IL 61866
PH. 217-892-3359

ELECTRIC: COLES MOULTRIE ELECTRIC
104 DEWITT AVE E
MATTOON, IL 61938
PH. 217-235-0341

WATER: CLEARWATER SERVICE CORP
2020 N. COUNTY ROAD 150 E
MATTOON, IL 61938
PH. 217-258-6711

