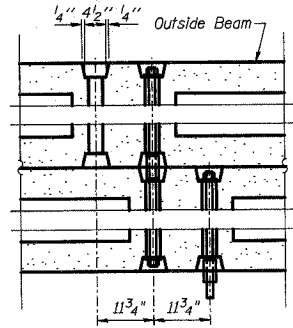
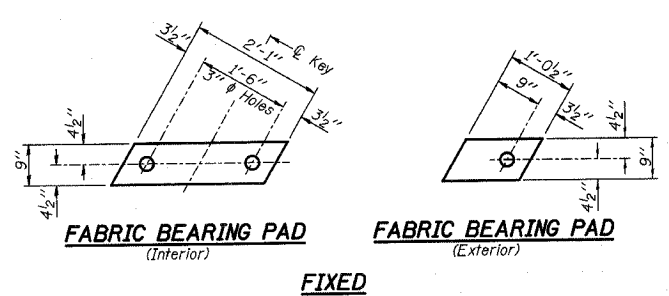
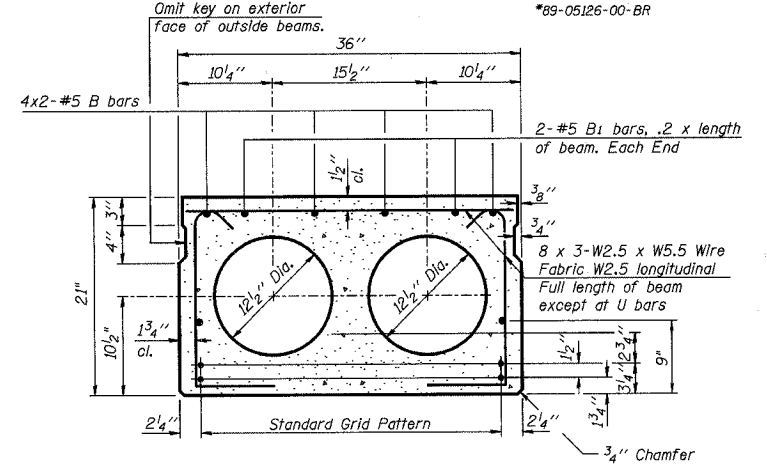
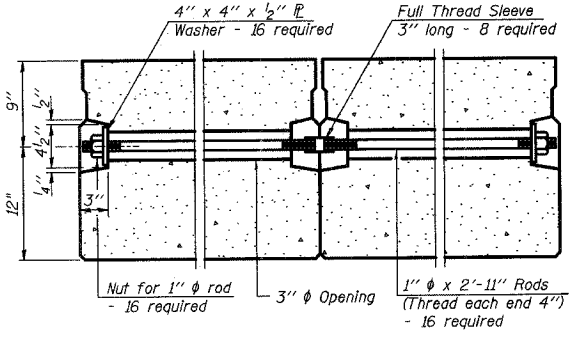


ROUTE NO.	SECTION	COUNTY	TOTAL SHEETS	SHEET NO.
TR 137A	*	EDGAR	18	7
FEDERAL DIST. NO.	ILLINOIS	PROJECT		

*89-05126-00-BR



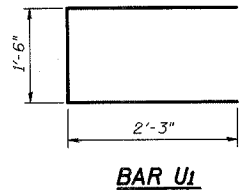
TYPICAL TRANSVERSE TIE ASSEMBLY



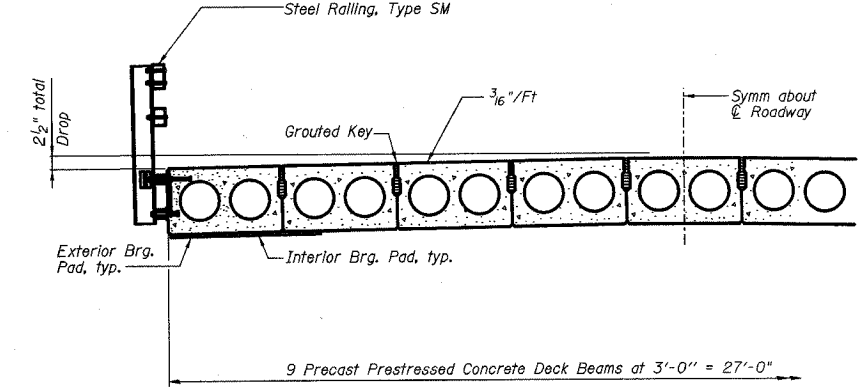
TYPICAL SECTION

1/2" ϕ Strands, Each Strand Stressed to 30,900 Lbs.
6-Strands 1 1/4" up, 8-Strands 3/4" up, 2-Strands 9" up

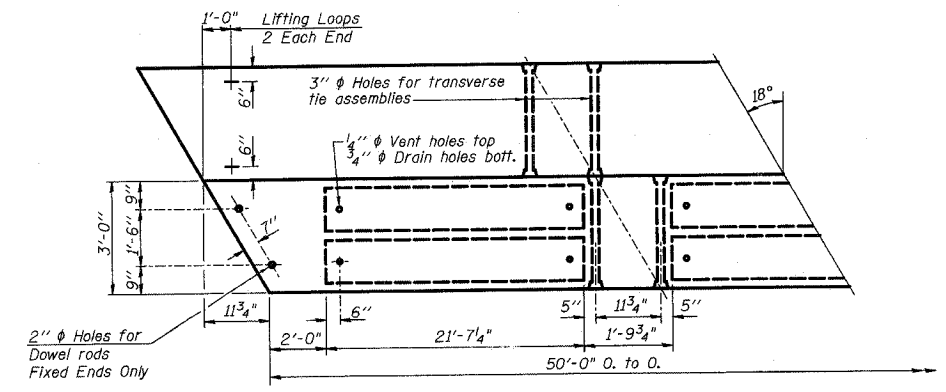
Note:
Place strands symmetrically about ϕ of beam.



BAR U1

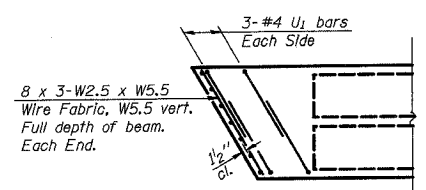


HALF CROSS SECTION

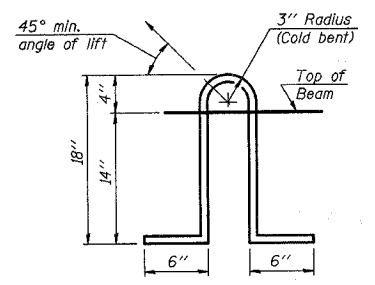


PLAN

2" ϕ Holes for Dowel rods
Fixed Ends Only



END PLAN



LIFTING LOOP DETAIL

NOTES

Prestressing steel shall be uncoated high strength, low relaxation 7-wire strand, Grade 270. The nominal diameter shall be 1/2" and the nominal cross-sectional area shall be 0.153 sq. in. Lifting loops shall be 2-1/2" ϕ -270 ksi strands, as shown. The 1" ϕ rods in the transverse tie assembly shall be tightened to a snug fit and the threads set. Pockets that receive transverse tie bar on outside shall be filled with grout after transverse tie assembly is in place. Non prestressing steel shall conform to AASHTO M-31 or M-322 Grade 60. The bearing seat surfaces shall be adjusted by shimming to assure firm and even bearing. Two 1/2" fabric adjusting shims of the dimensions of the Exterior Bearing Pad shall be provided for each bearing. Keyway surfaces shall be cleaned to remove form oil or other bond breaking material prior to shipment of the beams. Cleaning shall be done by sandblasting the keyway areas between top of the beam and the bottom edge of the key. Required Release Strength, f'cl, shall be 4000 p.s.i.

BILL OF MATERIAL*

Bar	No.	Size	Length	Shape
B	8	#5	26'-6"	—
B1	4	#5	10'-0"	—
U1	12	#4	6'-0"	U
Precast Prestressed Conc. Deck Bms.		Sq. Ft.	1350	

*The above bar list is for one beam only. Bars indicated thus 4x2-#5 etc, indicates 4 lines of bars with 2 lengths per line.

BEAM DETAILS

REVISIONS		TR 137A OVER TRIBUTARY OF CATTFISH CREEK		DRAWN BY DATE R King 11/04
1	DATE	INITIALS		CHECKED BY DATE JMB 11/04
2				GA/SC BY DATE CWC 11/04
3				BOOK NUMBER 469
4				PROJECT NO. 4817
5				SHEET NO.
6				
7				
8				
9				
10				
11				
12				