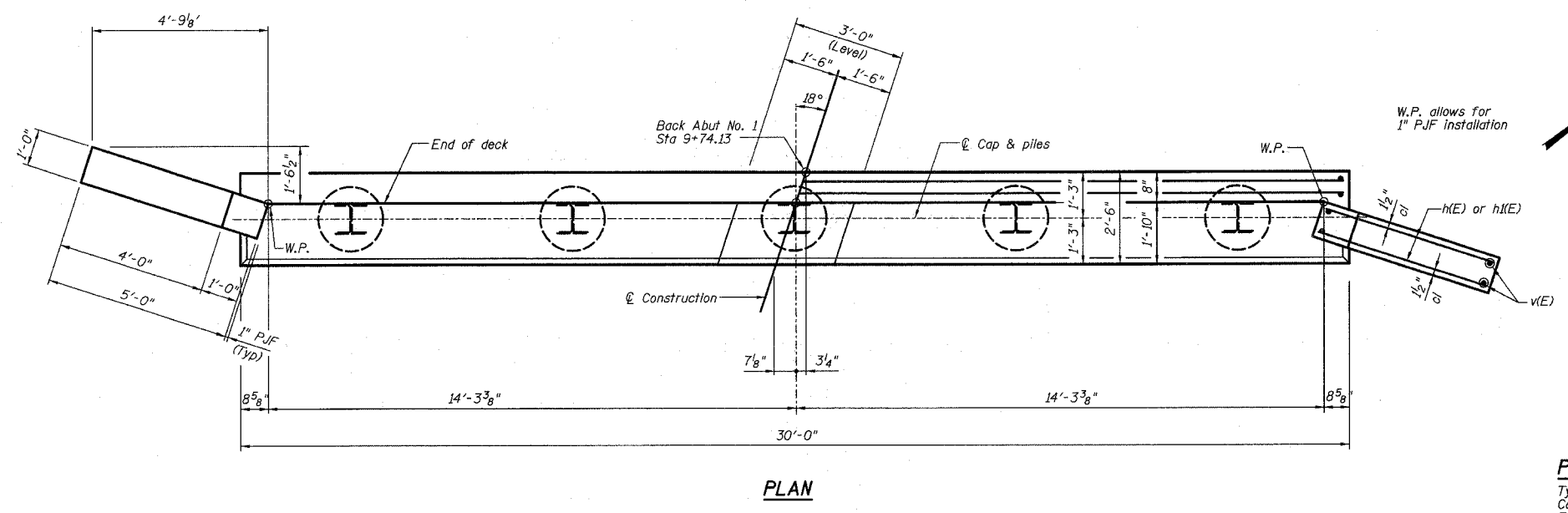
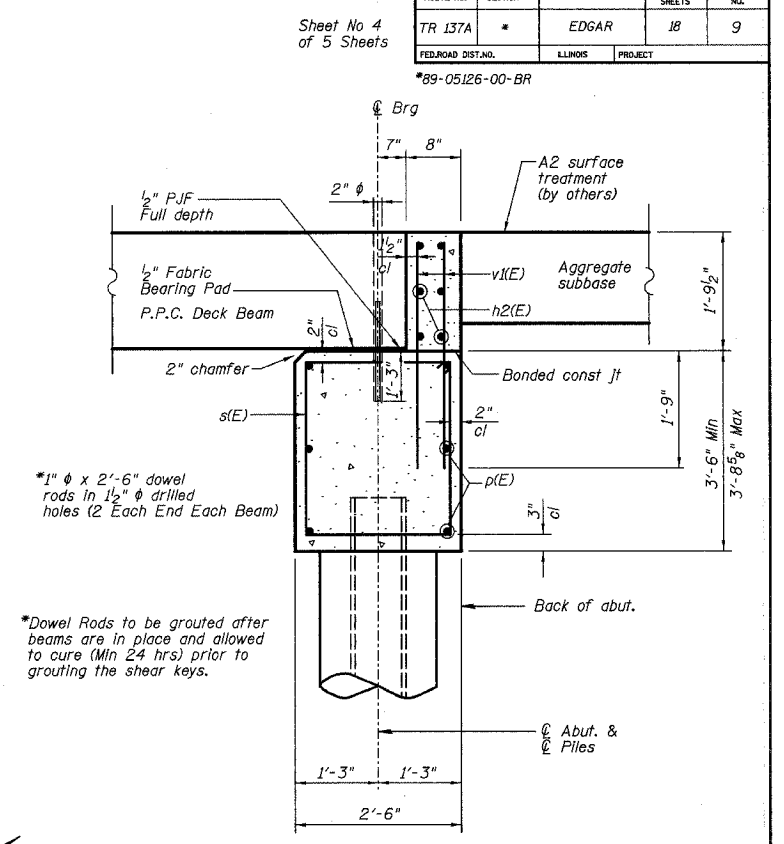
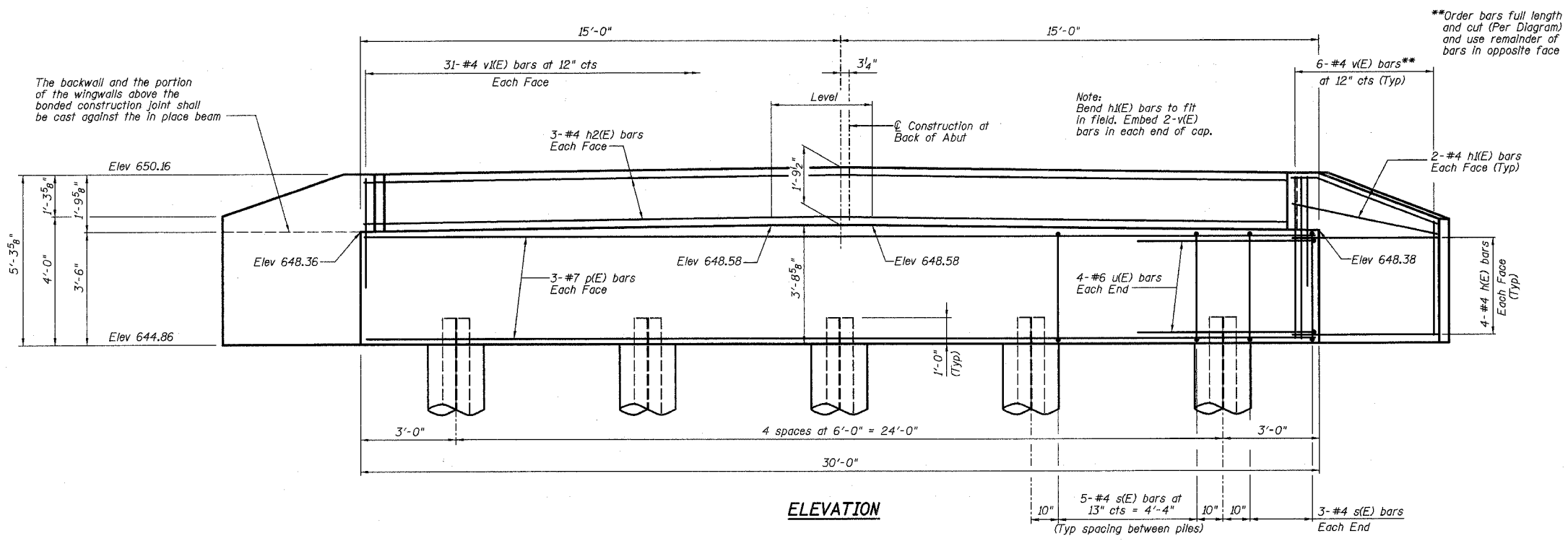


9133A

| | | | | |
|---------------------|----------|---------|--------------|-----------|
| ROUTE NO. | SECTION | COUNTY | TOTAL SHEETS | SHEET NO. |
| TR 137A | * | EDGAR | 18 | 9 |
| FED. ROAD DIST. NO. | ILLINOIS | PROJECT | | |

Sheet No 4 of 5 Sheets

*89-05126-00-BR



SECTION THRU ABUTMENT
(Dimensions at Rt L's)

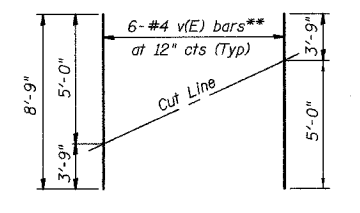
BILL OF MATERIAL

| Bar | No. | Size | Length | Shape |
|-----------------------------------|-----|-------|--------|-------|
| h(E) | 16 | #4 | 5'-10" | — |
| h(E) | 8 | #4 | 5'-0" | — |
| h2(E) | 6 | #4 | 29'-8" | — |
| p(E) | 6 | #7 | 29'-8" | — |
| s(E) | 26 | #4 | 11'-3" | □ |
| u(E) | 8 | #6 | 13'-1" | □ |
| v(E) | 12 | #4 | 8'-9" | — |
| v(E) | 62 | #4 | 3'-8" | — |
| Structure Excavation | | Cu Yd | 55.5 | |
| Concrete Structures | | Cu Yd | 13.4 | |
| Reinforcement Bars (Epoxy Coated) | | Pound | 1030 | |
| Furnishing steel HP10x42 Piles | | Foot | 84 | |
| Driving Piles | | Foot | 84 | |
| Test Pile | | Each | 1 | |

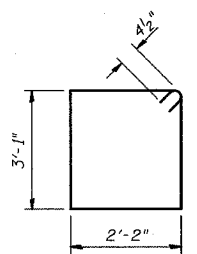
Reinforcement bars designated (E) shall be epoxy coated.

PILE DATA:

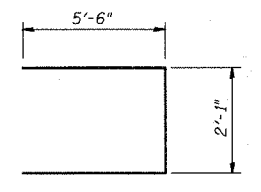
Type: HP 10x42
Capacity: 34 Ton driven to 51 Ton bearing
Est. Length: 21'
No. Req'd: 4 plus 1 test pile



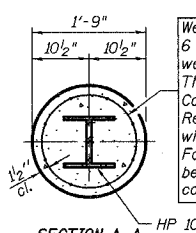
FIELD CUTTING DIAGRAM
**Order v(E) full length. Cut as shown and use remainder of bars in opposite face.



BARS s(E)



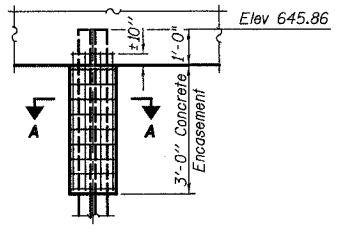
BAR u(E)



SECTION A-A
HP 10x42

Welded wire fabric 6 x 6-W4.0 x W4.0 weighing 58#/100 sq. ft. The cost of Excavation, Concrete Encasement and Reinforcement is included with Furnishing Piles. Forms for Encasement may be omitted when soil conditions permit.

PILE ENCASEMENT DETAIL



| REVISIONS | | ABUTMENT NO. 1 DETAILS | | DRAWN BY DATE | |
|-----------|------|------------------------|---|---------------|-----------------|
| No. | DATE | INITIALS | TR 137A OVER TRIBUTARY OF CATFISH CREEK | | R King 11/04 |
| 1 | | | SEC 89-05126-00-BR | | CHANGED BY DATE |
| 2 | | | SN 023-4424 | | JMB 11/04 |
| 3 | | | EDGAR | | QA/QC BY DATE |
| 4 | | | COUNTY | | CWC 11/04 |
| 5 | | | HOMER L. CHASTAIN & ASSOCIATES, LLP | | BOOK NUMBER |
| 6 | | | CONSULTING ENGINEERS | | 469 |
| 7 | | | 184-001397 | | PROJECT No. |
| 8 | | | | | 4817 |
| 9 | | | | | SHEET No. |
| 10 | | | | | |
| 11 | | | | | |
| 12 | | | | | |