

**INDEX OF SHEETS**

SHEET NO.	DESCRIPTION
1	TITLE SHEET & SUMMARY OF QUANTITIES
2	PLAN & PROFILE, TYPICAL SECTIONS & GENERAL NOTES
3	ROADWAY CROSS SECTIONS
4-12	BRIDGE DESIGN
13	CURLED END SECTIONS

**THE FOLLOWING STANDARDS ARE A PART OF THESE PLANS AND ARE INCLUDED AFTER SHEET NO. 13**

000001-04	STANDARD SYMBOLS & ABBREVIATIONS
280001-02	TEMPORARY EROSION CONTROL SYSTEMS
702001-05	TRAFFIC CONTROL DEVICES
BLR 21-6	TYPICAL APPLICATION OF TRAFFIC CONTROL DEVICES FOR CONSTRUCTION ON RURAL LOCAL HIGHWAYS
BLR 22-4	TYPICAL APPLICATION OF TRAFFIC CONTROL DEVICES FOR CONSTRUCTION ON RURAL LOCAL HIGHWAYS (TWO-LANE TWO WAY RURAL TRAFFIC) (ROAD CLOSED TO THRU TRAFFIC)

**SUMMARY OF QUANTITIES**

QUANTITY	UNIT	ITEM	CODE NO.
7.00	CU YD	EARTH EXCAVATION	20200100
205.00	CU YD	CHANNEL EXCAVATION	20300100
55.00	TON	AGGREGATE (EROSION CONTROL)	28001000
244.00	TON	STONE DUMPED RIPRAP, CLASS A4	28100807
66.00	TON	AGGREGATE SURFACE COURSE, TYPE B	40200800
1.00	EACH	REMOVAL OF EXISTING STRUCTURES	50100100
33.60	CU YD	CONCRETE STRUCTURES	50300225
2520.00	SQ FT	PRECAST PRESTRESSED CONCRETE DECK BEAMS (17" DEPTH)	50400305
3860.00	POUND	REINFORCEMENT BARS	50800105
210.00	FOOT	STEEL RAILING, TYPE S1	50900205
1152.00	FOOT	FURNISHING STEEL PILES HP12X53	51201600
1152.00	FOOT	DRIVING STEEL PILES	51202700
21.0	CU YD	CONCRETE ENCASEMENT	51204315
1.00	EACH	NAME PLATES	51500100
1.00	L54M	MOBILIZATION	07100100

DESIGN DESIGNATION:  
 DESIGN SPEED: 30 MPH  
 HIGHWAY CLASS - LOCAL ROAD  
 EXISTING STRUCTURE NO.: 033-3189  
 PROPOSED STRUCTURE NO.: 033-3297  
 CURRENT A.D.T. = 50  
 CONTRACT NO. 95421

**STATE OF ILLINOIS**

**DEPARTMENT OF TRANSPORTATION**

**PLANS FOR PROPOSED FEDERAL AID - B.R.R.P. PROJECT**

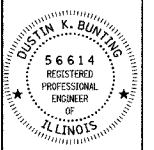
**T.R. 236 HAMILTON COUNTY SECTION 00-03136-00-BR  
 PROJECT NO. BROS-065(35) JOB NO. C-97-020-05**

T.R.	SECTION	COUNTY	TOTAL SHEETS	SHEET NO.
236	00-03136-00-BR	HAMILTON	13	1

323 W. 3RD ST.  
 P.O. BOX 160  
 MT. CARMEL, IL 62863  
 PHONE: (618)-262-8651  
 FAX: (618)-263-3327

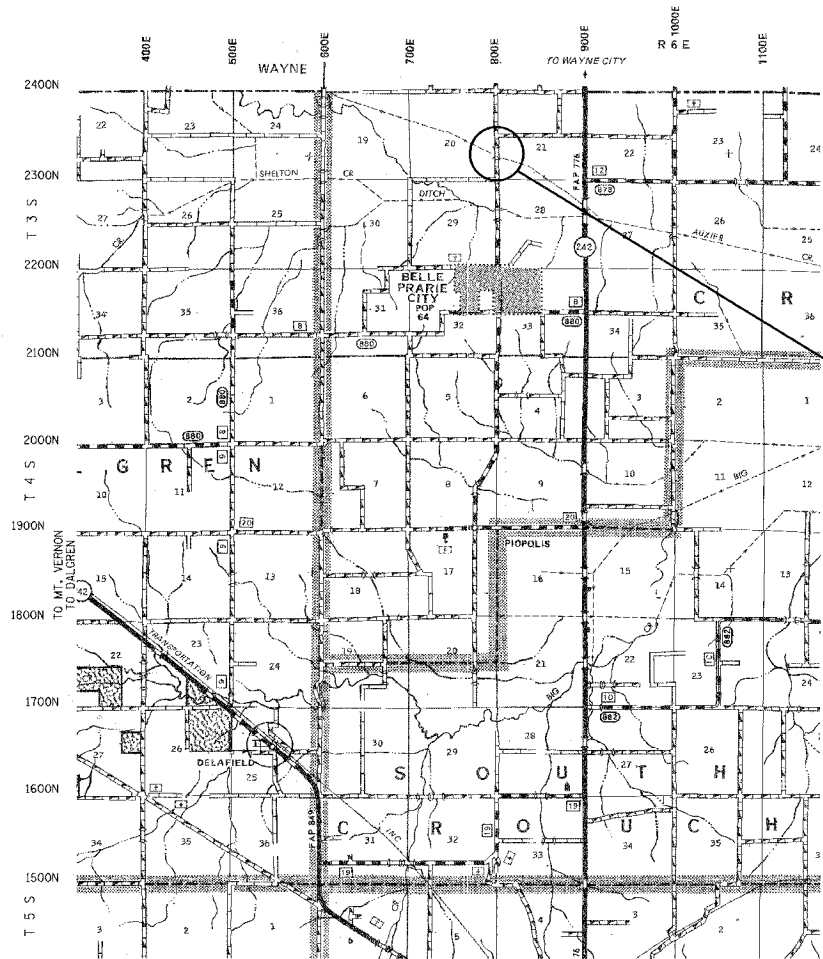
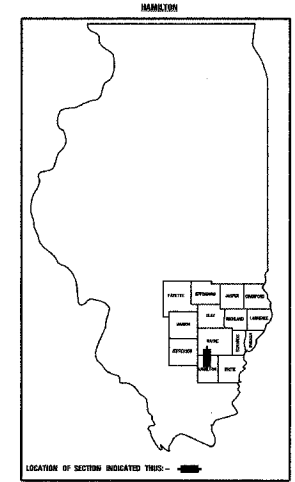


PROFESSIONAL DESIGN FIRM  
 LAND SURVEY & PROFESSIONAL ENGINEERING CORPORATION  
 184-000887  
 (62-032435)(35-002769)



DUSTIN K. BUNTING  
 NAME  
 SIGNATURE  
 DATE: 05-09-05  
 11-30-05 EXPIRES

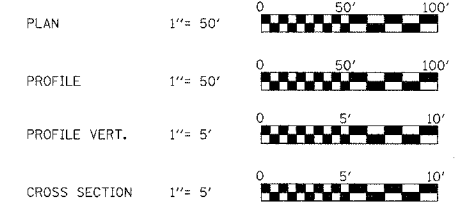
TOWNSHIP ROUTE 236  
 AUXIER CREEK  
 HAMILTON COUNTY, ILLINOIS



SECTION 00-03136-00-BR  
 BEGINS STATION 4+00

STATION 5+00, STRUCTURE NO. 033-3297  
 A 105' TRIPLE SPAN (3 @ 35') PRECAST  
 PRESTRESSED CONCRETE DECK BEAM  
 BRIDGE, (17" DEPTH) BEAMS, 24' ROADWAY,  
 0.00% GRADE, 25° LEFT FORWARD SKEW.

SECTION 00-03136-00-BR  
 ENDS STATION 6+00

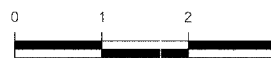


**J.U.L.I.E.  
 JOINT UTILITY LOCATION INFORMATION FOR EXCAVATION  
 1-800-892-0123**

THE ACCEPTANCE OF THIS PROJECT IS BASED ON THE MINIMUM DESIGN CRITERIA FOR A FEDERAL AID BRIDGE REPLACEMENT AND REHABILITATION PROGRAM ON THE COUNTY HIGHWAY SYSTEM.

*Maurice E. Kasel*  
 DIST. ENGR. LOCAL RDS. & STS.

APPROXIMATE SCALE: 1 INCH = 1 MILE



GROSS LENGTH	200.00 FT.	0.04 MILES
OMISSIONS	0.00 FT.	0.00 MILES
NET LENGTH	200.00 FT.	0.04 MILES

APPROVED *May 10, 2005*  
*Kenneth P. ...*  
 COUNTY ENGINEER

PASSED *6/8 2005*  
*Maurice E. Kasel*  
 DISTRICT ENGINEER OF LOCAL ROADS & STREETS

APPROVED *6/8 2005*  
*Christina M. Keenan*  
 DEPUTY DIRECTOR OF HIGHWAYS/ REGION 4 ENGINEER

SHEET TITLE:  
 TITLE SHEET

SCALE: VRES  
 BY: DKB  
 DATE: 1/26/04  
 REV:

1 OF 13  
 SHEETS

SHEET NO.  
 1