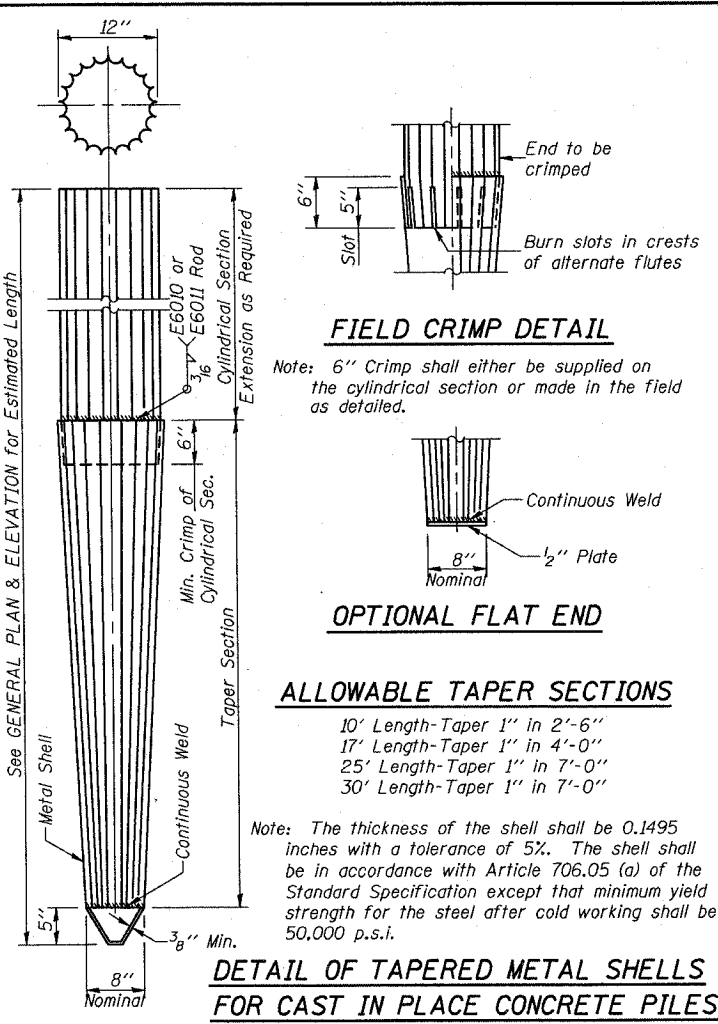
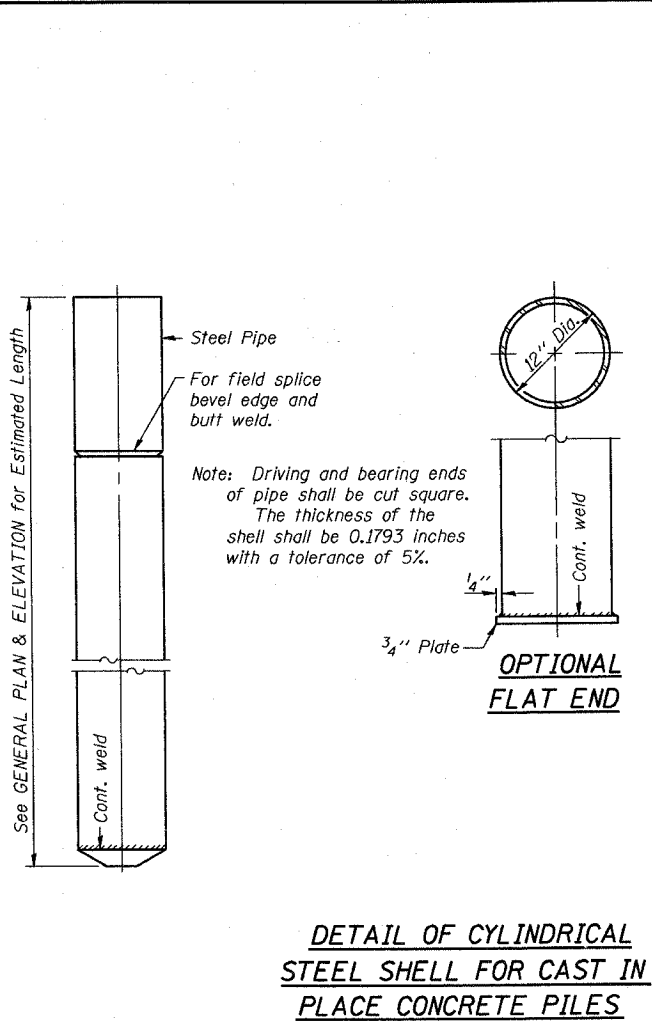


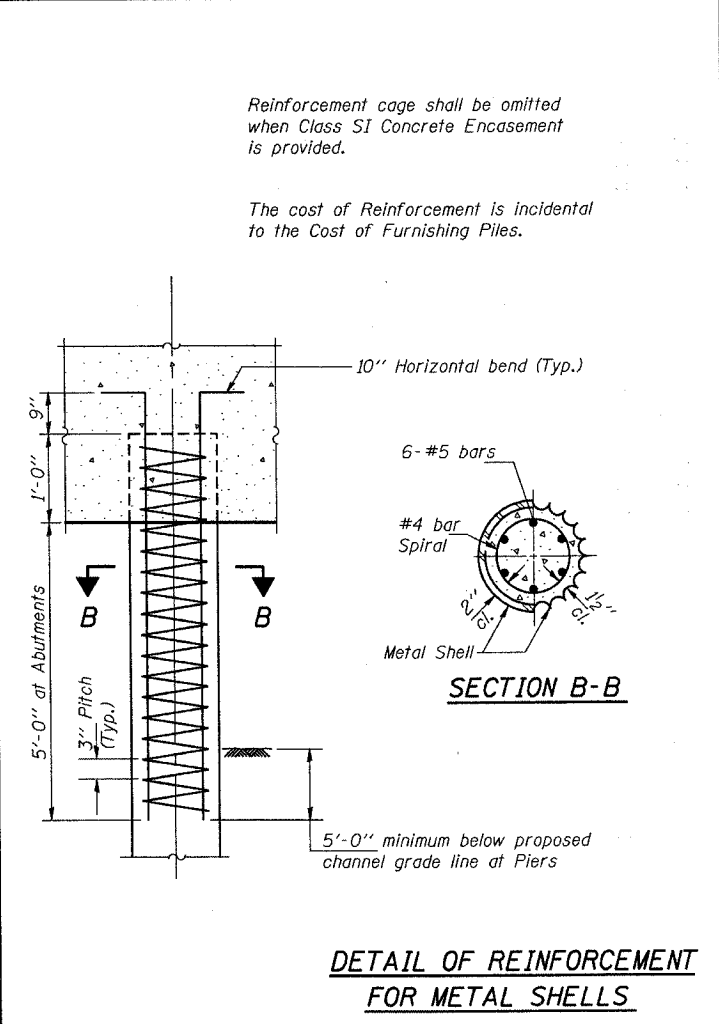
**DETAIL OF PRECAST CONCRETE PILES**



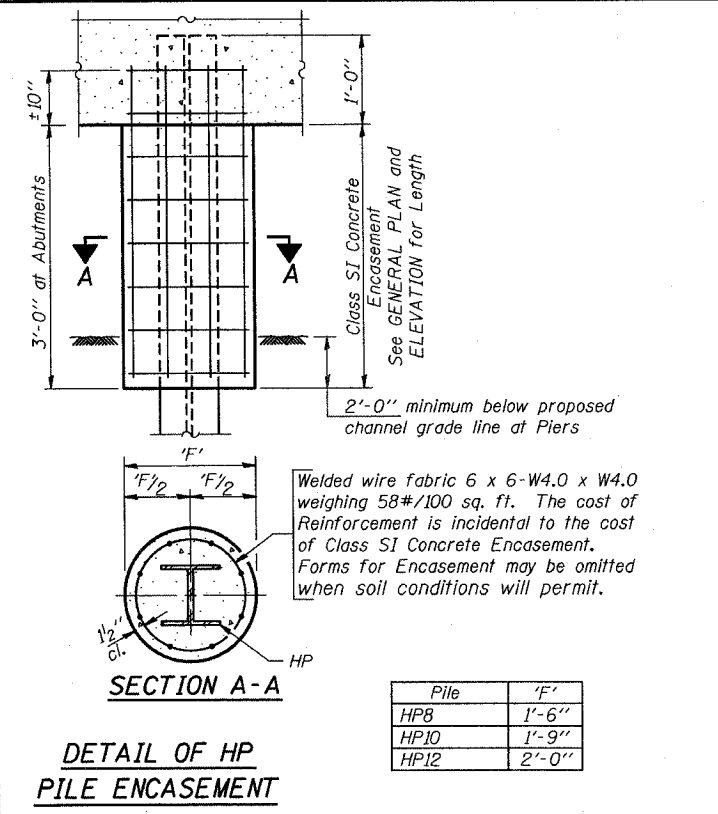
**DETAIL OF TAPERED METAL SHELLS FOR CAST IN PLACE CONCRETE PILES**



**DETAIL OF CYLINDRICAL STEEL SHELL FOR CAST IN PLACE CONCRETE PILES**

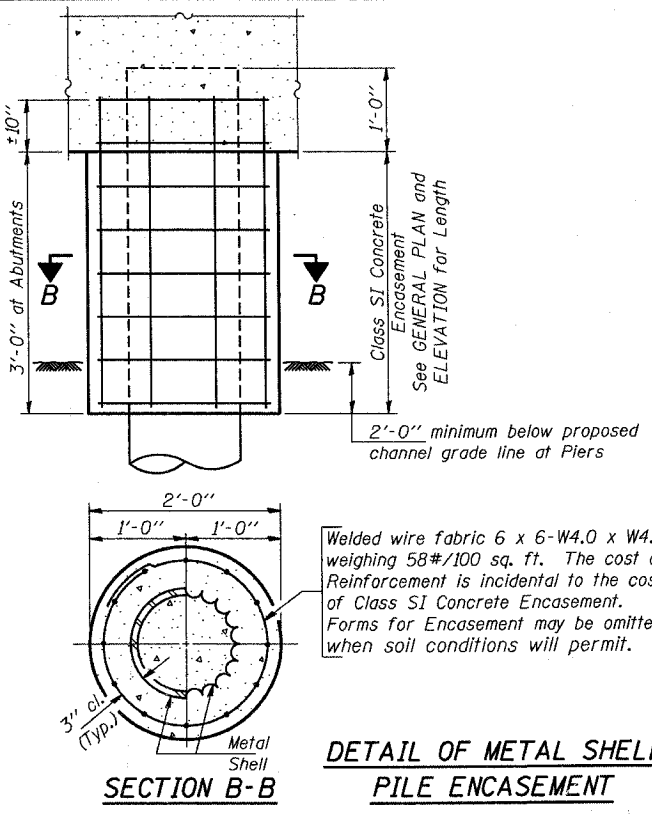


**DETAIL OF REINFORCEMENT FOR METAL SHELLS**



Pile	'F'
HP8	1'-6"
HP10	1'-9"
HP12	2'-0"

**DETAIL OF HP PILE ENCASEMENT**



**DETAIL OF METAL SHELL PILE ENCASEMENT**

**QUANTITIES/LIN. FT. OF ENCASEMENT (STEEL PILES)**

Pile Size	Item	Quantity
HP8	Class SI Concrete Encasement	0.063 C.Y.
HP10	Class SI Concrete Encasement	0.086 C.Y.
HP12	Class SI Concrete Encasement	0.112 C.Y.

**(METAL SHELL PILES)**

Pile Size	Item	Quantity
12" Dia.	Class SI Concrete Encasement	0.087 C.Y.

<b>PILE DETAILS</b>
<b>STANDARD CX-1</b>

Illinois Department of Transportation

PASSED November 1, 1995

*Ralph E. Carlson*  
 Engineer of Bridge Design

APPROVED November 1, 1995

*Ralph E. Carlson*  
 Engineer of Bridges and Structures

7 0340218 1996 c:\p101\queue\queue3.acf\_rsl\_user\project\br-stpdr\anap11e.prf