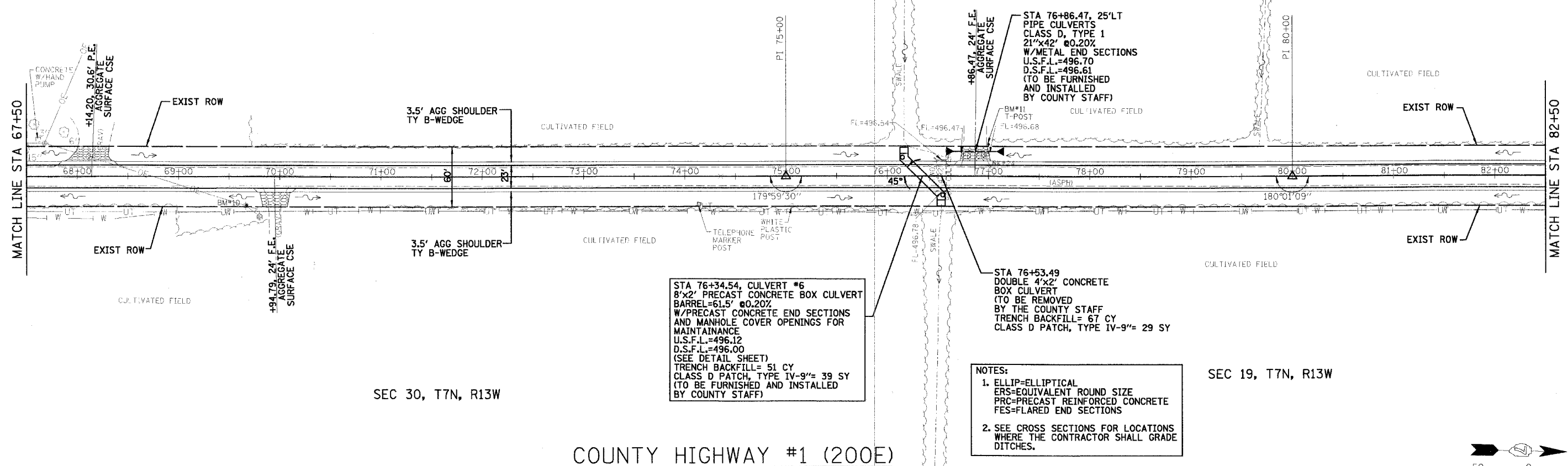


SEC 24, T7N, R14W

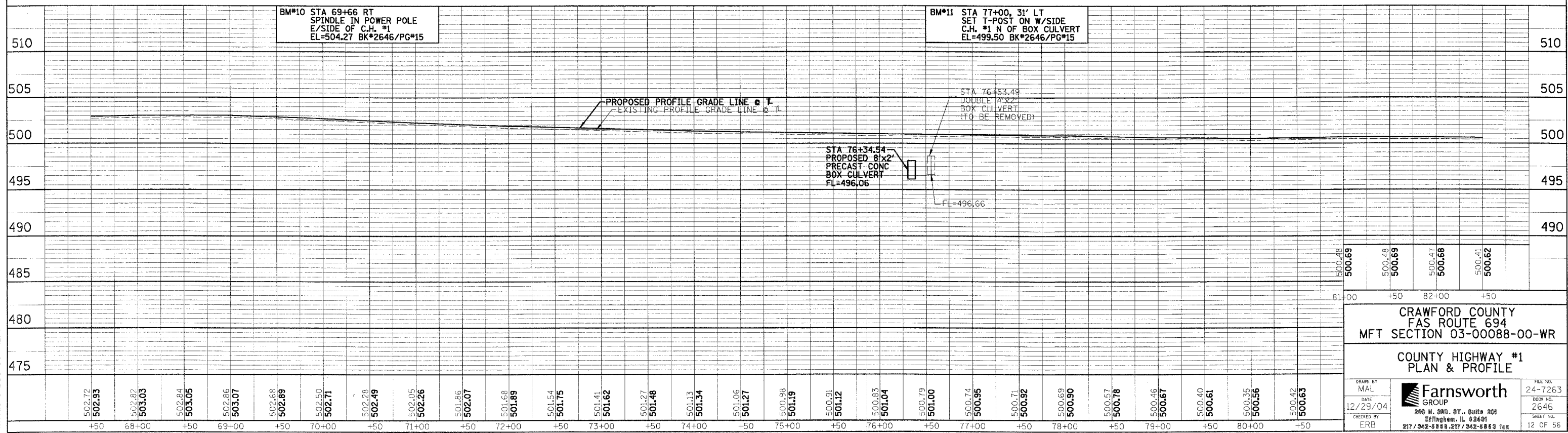


SEC 30, T7N, R13W

SEC 19, T7N, R13W

COUNTY HIGHWAY #1 (200E)

- NOTES:
1. ELLIP=ELLIPTICAL
ERS=EQUIVALENT ROUND SIZE
PRC=PRECAST REINFORCED CONCRETE
FES=FLARED END SECTIONS
 2. SEE CROSS SECTIONS FOR LOCATIONS WHERE THE CONTRACTOR SHALL GRADE DITCHES.



CRAWFORD COUNTY
FAS ROUTE 694
MFT SECTION 03-00088-00-WR

COUNTY HIGHWAY #1
PLAN & PROFILE

DRAWN BY MAL	DATE 12/29/04		FILE NO. 24-7263
CHECKED BY ERB	BOOK NO. 2646		SHEET NO. 12 OF 56

200 N. 3RD. ST., Suite 206
Effingham, IL 62401
217/342-8888, 217/342-8883 fax

File: c:\userp\cgr\p03p01.dgn
DATE: 8-Dec-04 12:10