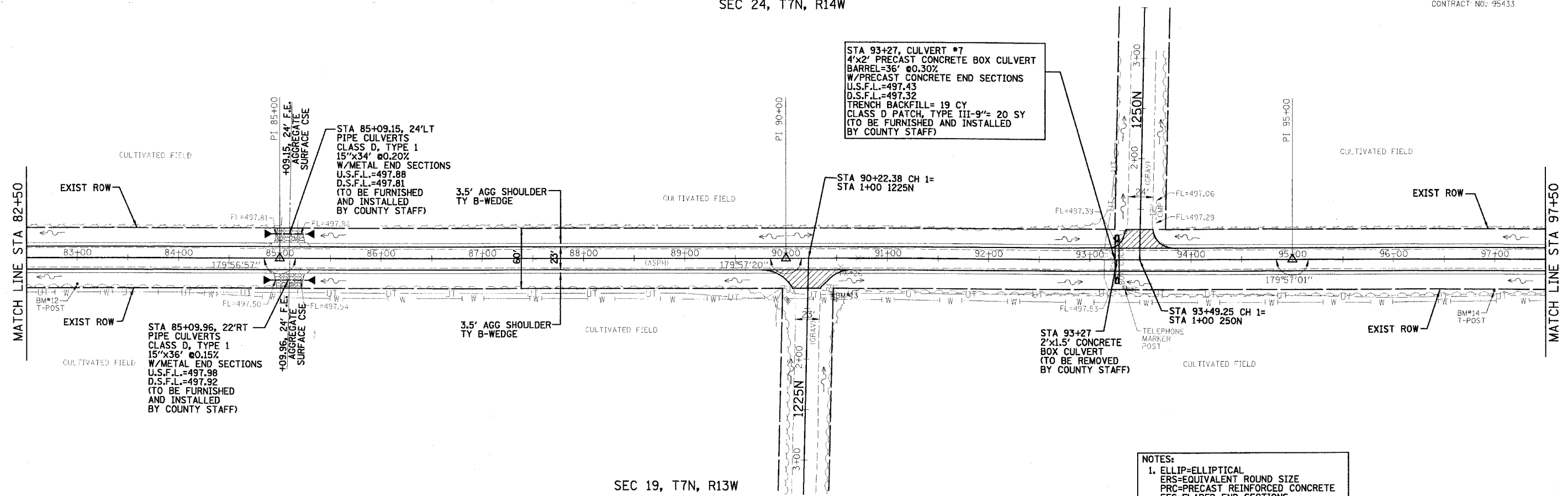


F.A.S. RTE.	SECTION	COUNTY	TOTAL SHEETS	SHEET NO.
694	03-00088-00-WR	CRAWFORD	56	13
STA. 82+50 TO STA. 97+50				
FED. ROAD DIST. NO.		ILLINOIS FED. AID PROJECT		
		CONTRACT NO. 95433		

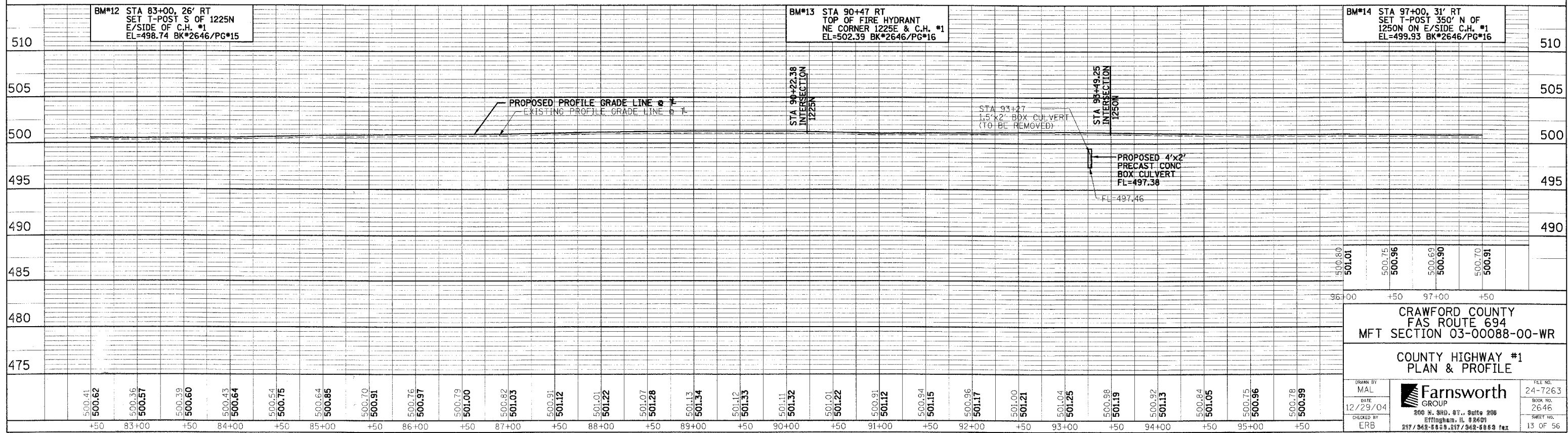
SEC 24, T7N, R14W



SEC 19, T7N, R13W

COUNTY HIGHWAY #1 (200E)

- NOTES:
- ELLIP=ELLIPTICAL  
ERS=EQUIVALENT ROUND SIZE  
PRC=PRECAST REINFORCED CONCRETE  
FES=FLARED END SECTIONS
  - SEE CROSS SECTIONS FOR LOCATIONS WHERE THE CONTRACTOR SHALL GRADE DITCHES.



CRAWFORD COUNTY  
FAS ROUTE 694  
MFT SECTION 03-00088-00-WR

COUNTY HIGHWAY #1  
PLAN & PROFILE

DRAWN BY MAL	DATE 12/29/04	CHECKED BY ERB	FILE NO. 24-7263
		800 N. 9RD. ST., Suite 208 Bellingham, IL 62601 217/342-5800, 817/342-8889 Fax	
		BOOK NO. 2646	SHEET NO. 13 OF 56

File: c:\user\dm\paw\paw.dgn  
 DATE: 8-Dec-06 12:00