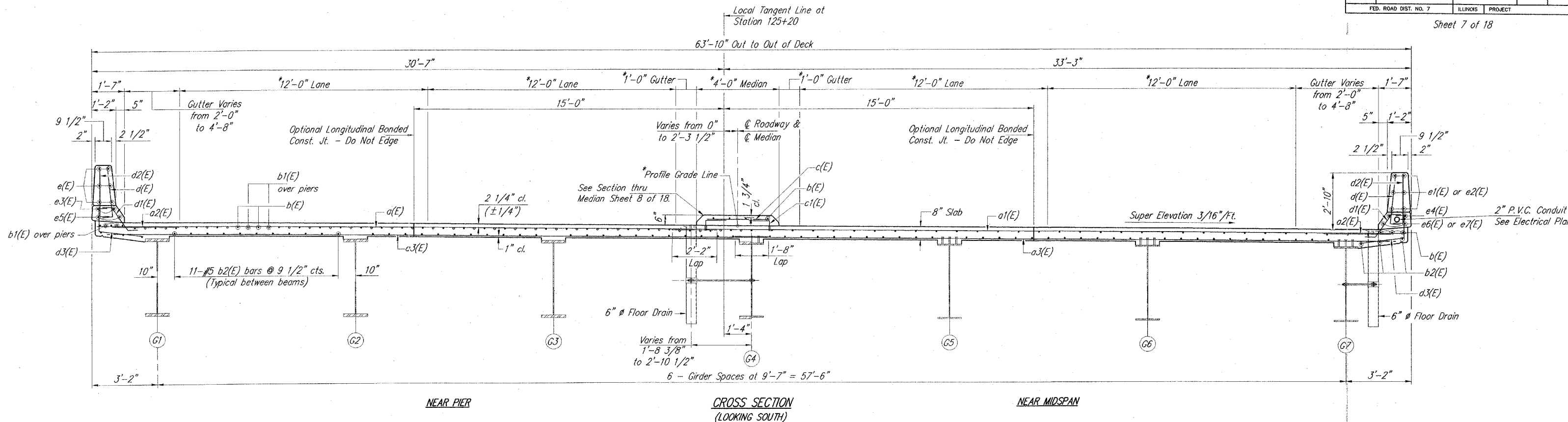


ROUTE NO. F.A.U. 8966	SECTION SEC. 97-00208-01-GS	COUNTY MADISON	TOTAL SHEETS 34	SHEET NO. 17
FED. ROAD DIST. NO. 7		ILLINOIS PROJECT		

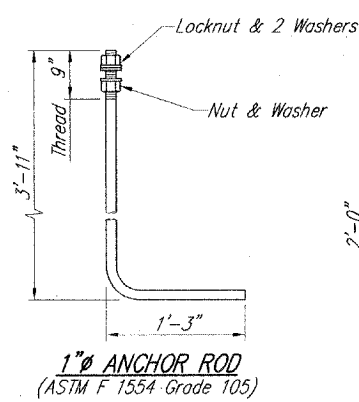


\*These dimensions are measured radially.  
All other dimensions are perpendicular to the local tangent.

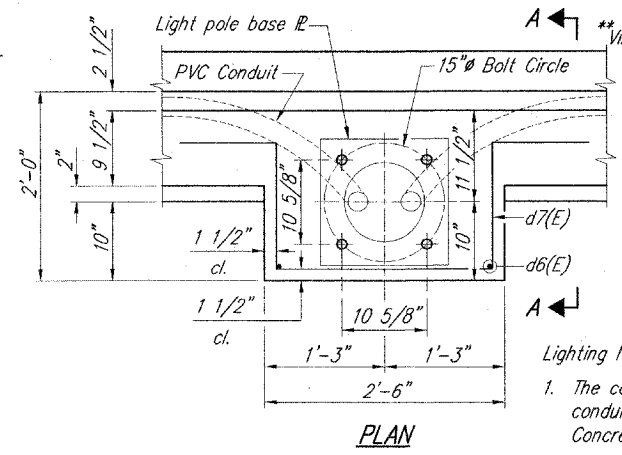
**MEDIAN LAYOUT  
TABLE OF DIMENSIONS**

"x" (ft.)	"y" Lt. (ft.)	"y" Rt. (ft.)
-133.029	-	4.318
-131.594	-0.266	-
-120.000	0.116	3.886
-110.000	0.417	3.585
-100.000	0.691	3.310
-90.000	0.940	3.061
-80.000	1.163	2.838
-70.000	1.359	2.642
-60.000	1.529	2.472
-50.000	1.673	2.327
-40.000	1.791	2.210
-30.000	1.882	2.118
-20.000	1.948	2.052
-10.000	1.987	2.013
0.000	2.000	2.000
10.000	1.987	2.013
20.000	1.948	2.052
30.000	1.882	2.118
40.000	1.791	2.210
50.000	1.673	2.327
60.000	1.529	2.472
70.000	1.359	2.642
80.000	1.163	2.838
90.000	0.940	3.061
100.000	0.691	3.310
110.000	0.417	3.585
120.000	0.116	3.886
130.008	-	4.214
131.408	-0.260	-

"x" dimensions are measured along the local tangent.  
"y" dimensions are measured perpendicular to the local tangent.

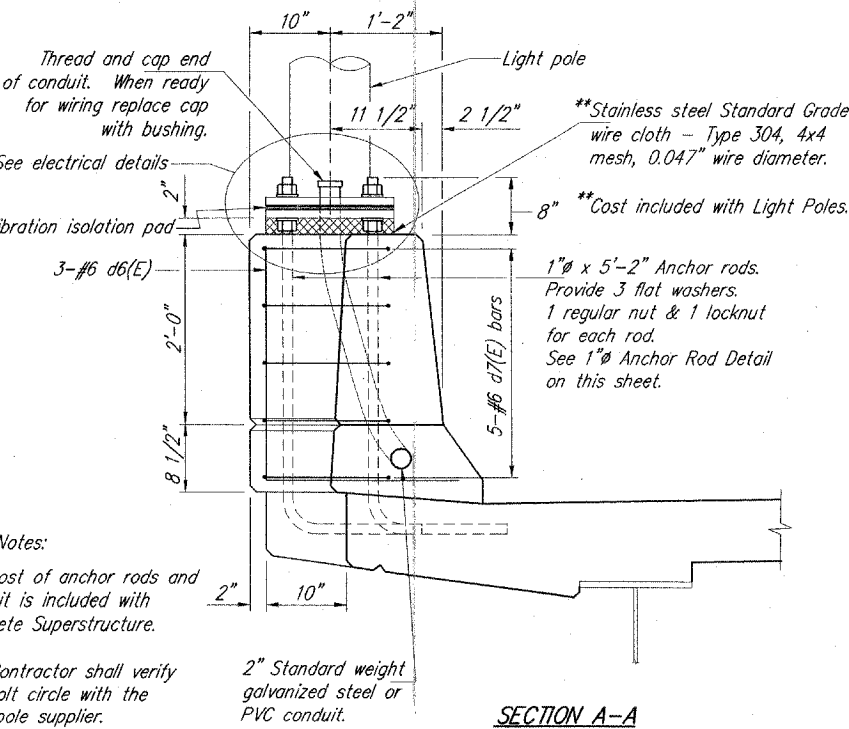


**1" ANCHOR ROD  
(ASTM F 1554-Grade 105)**

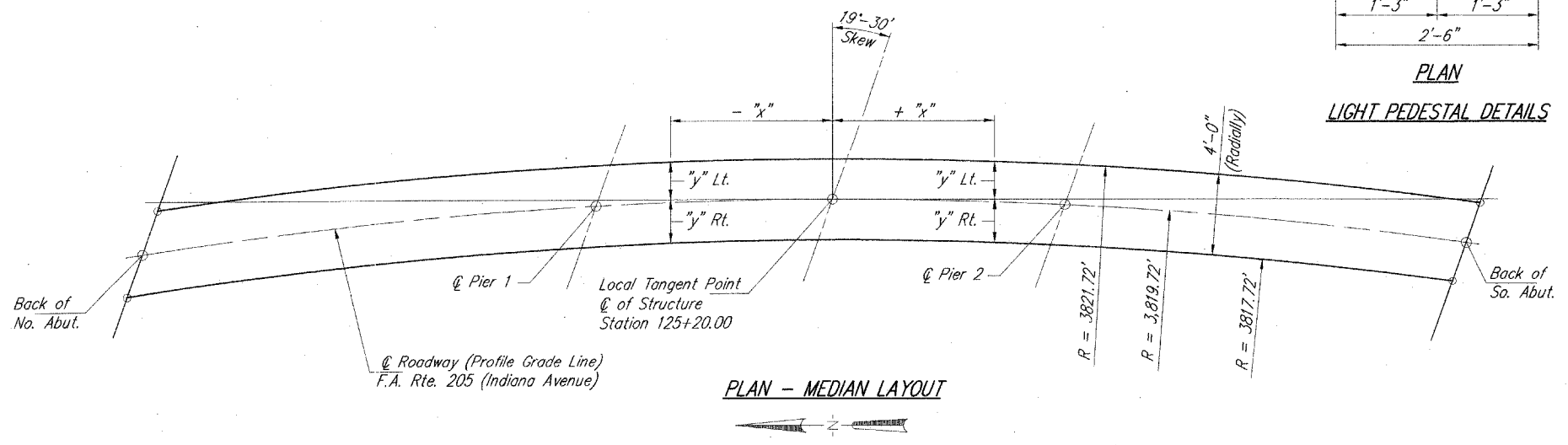


**PLAN  
LIGHT PEDESTAL DETAILS**

- Lighting Notes:**
- The cost of anchor rods and conduit is included with Concrete Superstructure.
  - The Contractor shall verify the bolt circle with the light pole supplier.



**SECTION A-A**



**PLAN - MEDIAN LAYOUT**

Corporate License Number 184-001-084

**SUPERSTRUCTURE - CROSS SECTION**  
INDIANA AVENUE over NORFOLK SOUTHERN RAILWA  
SEC. 97-00208-01-GS  
STATION 125+20.00  
ALTON, ILLINOIS  
STR. NO. 060-6110

Copyright Hanson Professional Services Inc. 2005



95S1008  
DATE 05/12/05