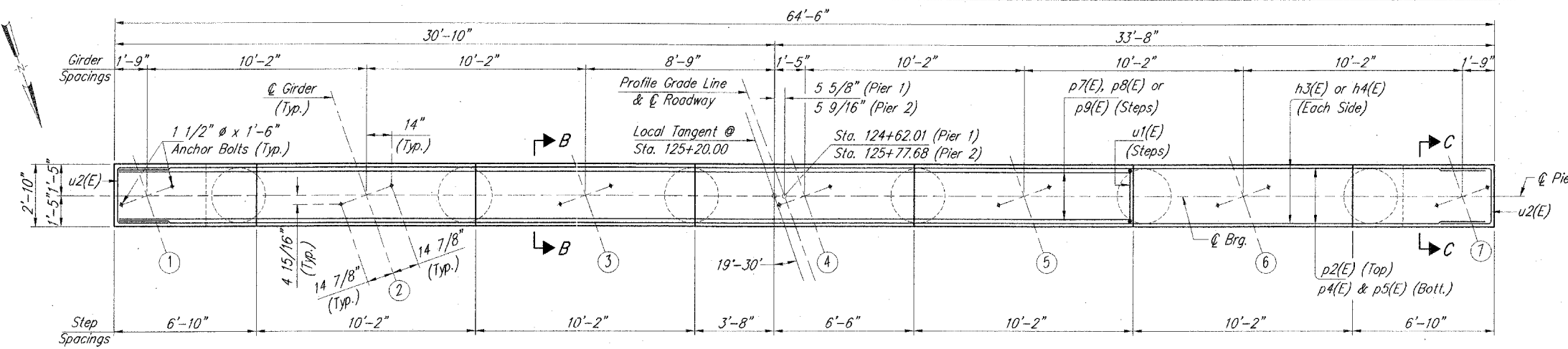


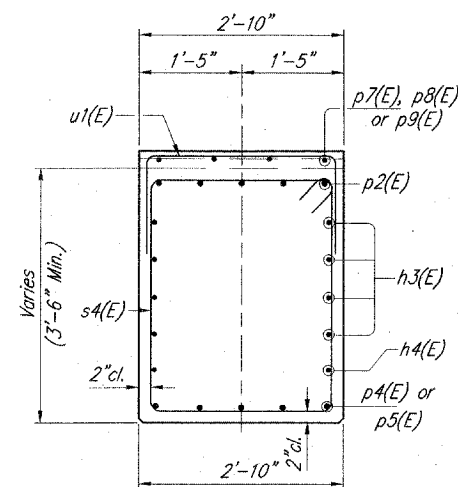
Contract No. 97255

ROUTE NO.	SECTION	COUNTY	TOTAL SHEETS	SHEET NO.
F.A.U.8986	SEC. 97-00208-01-05	MADISON	34	26
FED. ROAD DIST. NO. 7		ILLINOIS	PROJECT	

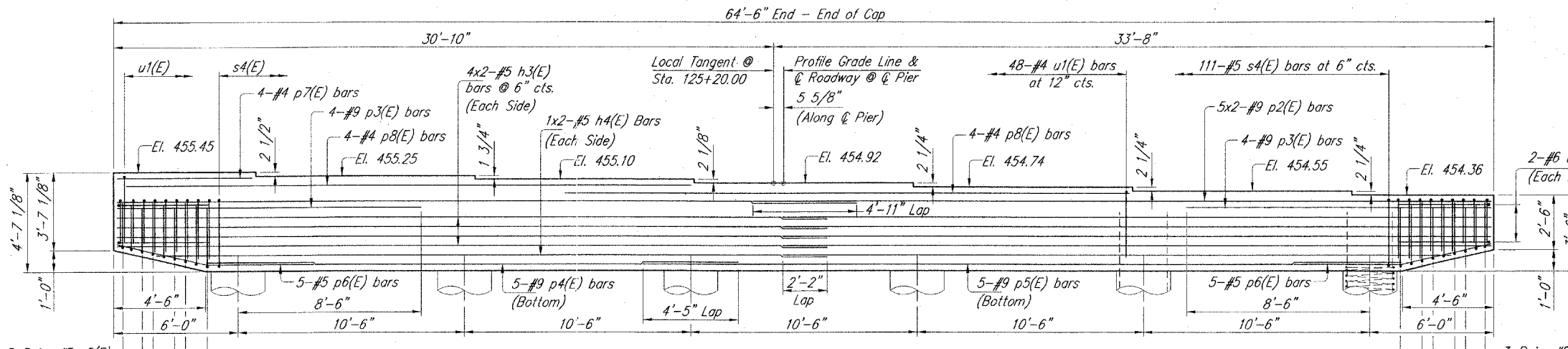
Sheet 16 of 18



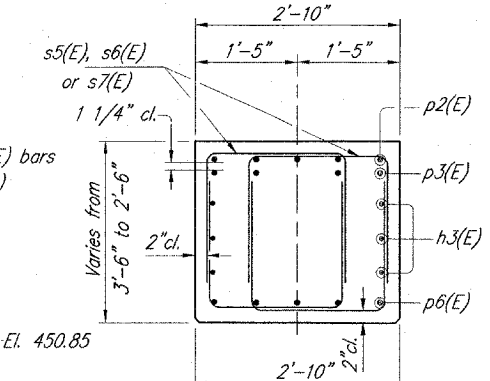
TOP PLAN - PIERS 1 & 2



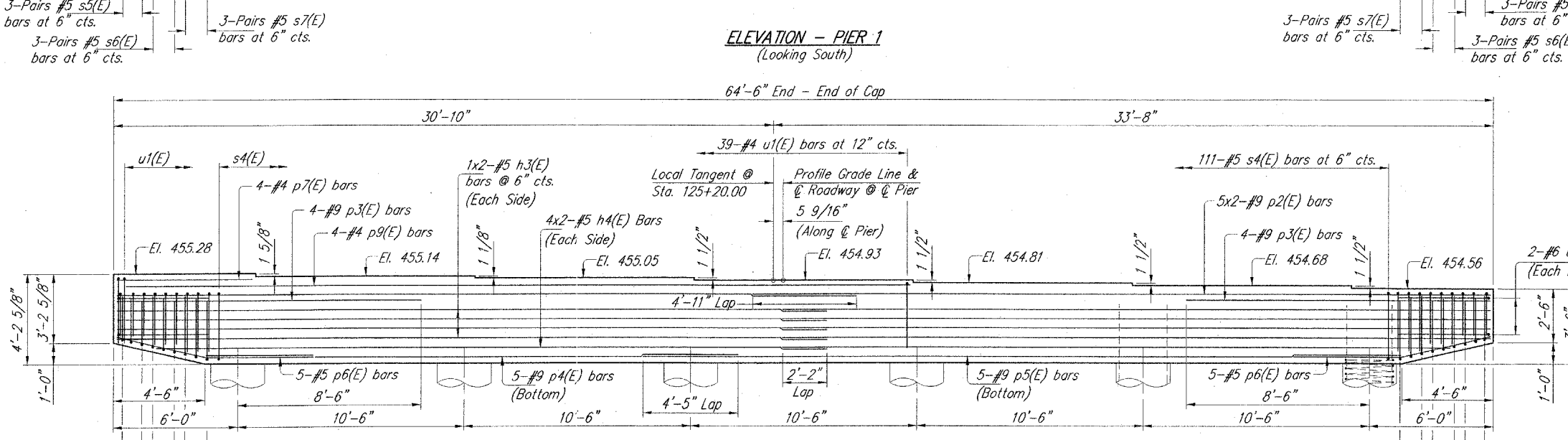
SECTION B-B



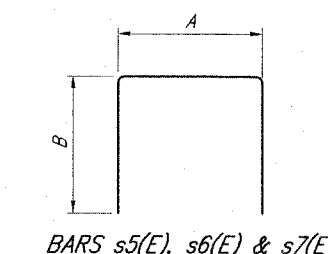
ELEVATION - PIER 1 (Looking South)



SECTION C-C



ELEVATION - PIER 2 (Looking South)



Bar	A	B
s5(E)	1'-11"	2'-2"
s6(E)	1'-11"	2'-5"
s7(E)	1'-11"	2'-9"

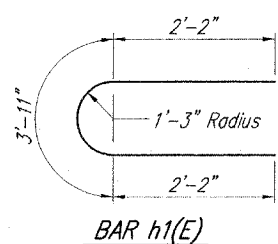
BILL OF MATERIAL - 2 PIERS

Bar	No.	Size	Length	Shape
h1(E)	56	#5	8'-3"	
h2(E)	124	#5	28'-0"	
h3(E)	32	#5	33'-2"	
h4(E)	8	#5	31'-1"	
n(E)	232	#7	6'-4"	
n1(E)	144	#7	6'-1"	
p2(E)	20	#9	34'-7"	
p3(E)	16	#9	14'-4"	
p4(E)	10	#9	24'-9"	
p5(E)	10	#9	35'-3"	
p6(E)	20	#5	6'-5"	
p7(E)	8	#4	6'-6"	
p8(E)	8	#4	26'-8"	
p9(E)	4	#4	36'-4"	
s4(E)	222	#5	12'-3"	
s5(E)	24	#5	6'-3"	
s6(E)	24	#5	6'-9"	
s7(E)	24	#5	7'-5"	
*Sp(E)	6	#4	347'-0"	
*Sp1(E)	6	#4	343'-0"	
l(E)	148	#7	9'-0"	
u1(E)	167	#4	6'-6"	
u2(E)	8	#6	7'-0"	
v4(E)	116	#7	13'-6"	
v5(E)	116	#7	13'-3"	
v6(E)	72	#7	12'-10"	
v7(E)	72	#7	12'-8"	
w(E)	36	#5	29'-7"	

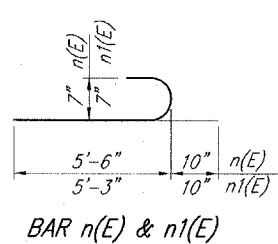
Reinforcement Bars, Epoxy Coated	Lbs.	36690
Concrete Structures	Cu. Yds.	339.8
Furn. Sll. Piles HP12x74	Foot	3551
Driving Steel Piles	Foot	3551
Test Pile HP12x74	Each	1
Metal Shoes	Each	31
Structure Excavation	Cu. Yds.	280

*Includes 5 - 2'-0" Laps

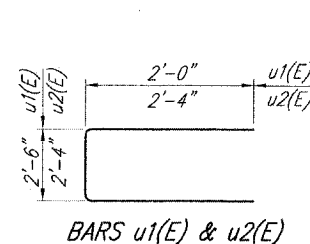
- Notes:
1. Cast steps monolithically with cap.
 2. All edges shall have standard 3/4" chamfers except as noted.
 3. Space cap reinforcement to miss anchor bolts.
 4. Minimum lap for spirals = 2'-0"



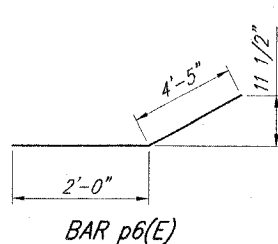
BAR h1(E)



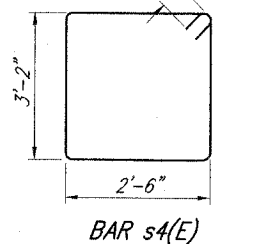
BAR n(E) & n1(E)



BARS u1(E) & u2(E)



BAR p6(E)



BAR s4(E)

LAYOUT 10/31/97
 DRAWN 3/10/98
 CHECKED 3/31/05
 DESIGNED 05/12/05
 PROJECT 05-12-0516-PIERS/2/PIERS MAY 12, 2005 7:59AM DAB

Corporate License Number 184-001-084

PIERS 1 & 2 - SHEET 2 OF 2
 INDIANA AVENUE over NORFOLK SOUTHERN RAILWAY
 SEC. 97-00208-01-GS
 STATION 125+20.00
 ALTON, ILLINOIS
 STR. NO. 060-6110

Copyright Hanson Professional Services Inc. 2005

Hanson Professional Services Inc.

JOB NO. 9551008
 DATE 05/12/05