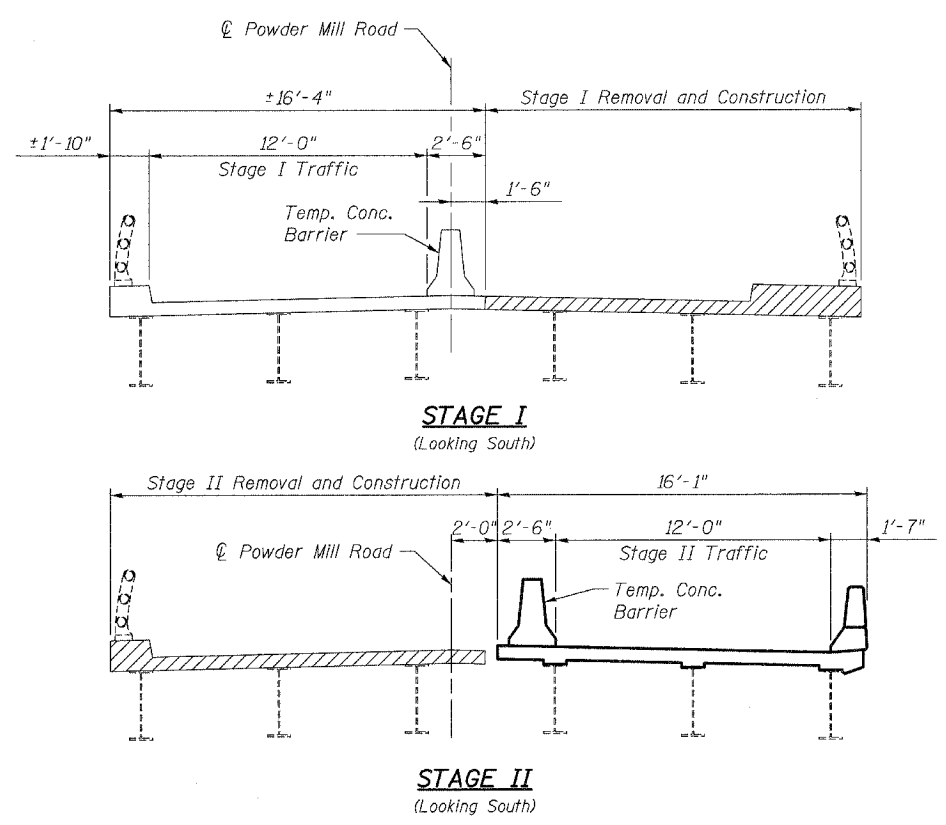


FBI ROUTE	SECTION	COUNTY	TOTAL SHEETS	SHEET NO.
9003	03-00044-00-BR	MADISON	24	10
STA.	TO STA.			
FED. ROAD DIST. NO.	ILLINOIS	FED. AID URBAN-		

SHEET NO. 3  
17 SHEETS



STAGE TRAFFIC CROSS SECTIONS

**STAGE CONSTRUCTION NOTES**

STAGE I

Suggested Sequence of Construction:

1. Remove all welded utility connections (by others).
2. Erect traffic control & reroute traffic to the southbound lane with one 12'-0" lane and signalization. See Roadway Plans.
3. Remove existing deck slab, railing, approach pavement and abutment backwall within Stage I limits. Temporary Sheet Piling will be required for abutment modifications & approach slab replacement.
4. Jack and remove existing bearings. (Both abutments. Piers 1 and 2 bearings to remain in place).
5. Install new bearings and steel extensions. Remove any temporary jacking.
6. Clean existing beams and remove lead paint in designated areas See Special Provisions.
7. Install stud shear connectors to steel beams.
8. Cast new bridge deck, concrete diaphragms and parapets.
9. Complete Stage I roadway and approach work as required.
10. Remove traffic control from this stage and install new traffic control for Stage II

STAGE II

1. Same sequence as Stage I except widening is on west side of structure.

- Notes:
- ① See sheet 13 of 17 for abutment removal details.
  - ② Hatching indicates removal of existing concrete deck.
  - ③ Temporary concrete barrier shall conform to Standard 704001. See sheet 17 of 17.
  - ④ For quantity of temporary concrete barrier, see Roadway Plans.

**STAGING DETAILS  
POWDER MILL ROAD OVER  
EAST FORK OF WOOD RIVER  
SECTION 03-00044-00-BR  
VILLAGE OF EAST ALTON  
STA. 13+10  
STRUCTURE NO. 060-6400**