

F.A.P. RTE.	SECTION	COUNTY	TOTAL SHEETS	SHEET NO.
726	130 I-2, TS	WILLIAMSON	90	1

CONTRACT NO 98884

STATE OF ILLINOIS
DEPARTMENT OF TRANSPORTATION
DIVISION OF HIGHWAYS

PROPOSED HIGHWAY PLANS

FAP ROUTE 726 (ILLINOIS 148)
SECTION 130 I-2, TS
FEDERAL PROJECT NO: HS-0726(053)
INTERSECTION OF ILL 148 AND
GRAND ROAD/MCCREE ROAD
TRAFFIC SIGNALS
WILLIAMSON COUNTY
C-99-015-05

FOR INDEX OF SHEETS, SEE SHEET NO. 2
FOR SUMMARY OF QUANTITIES, SEE SHEET NO. 3 & 4

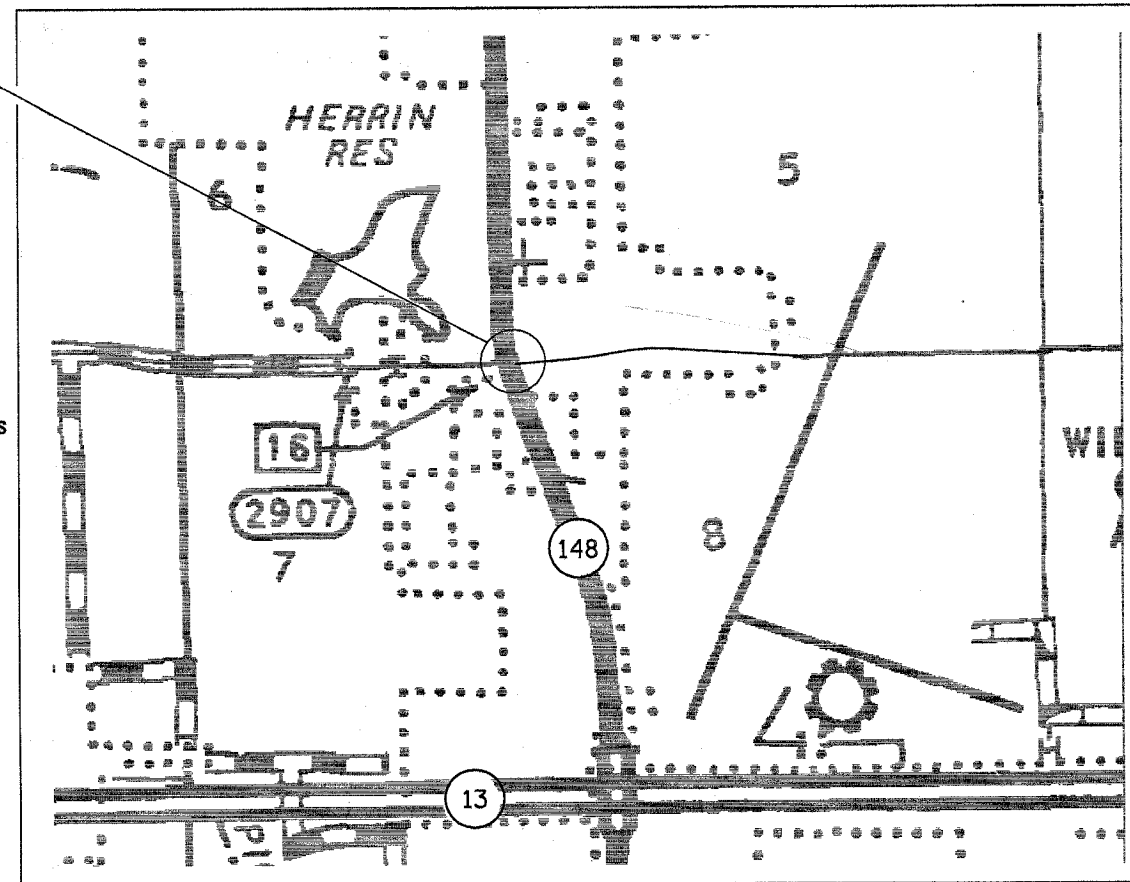
APPROACH	ADT (2003)	% TRUCKS
ILL 148 N OF GRAND ROAD	16,600	2%
MCCREE RD E OF ILL 148	150	0%
ILL 148 S OF GRAND ROAD	16,000	2%
GRAND ROAD W OF ILL 148	3,650	1%

D-99-027-04



LOCATION OF SECTION INDICATED THUS: - ■ -

PROJECT LOCATION
BEGIN STATION 112+37
END STATION 119+00



0 50' 100' 1" = 50' PLAN, PROFILE, CROSS SECTIONS

0 50' 100' 1" = 20' PLAN

FULL SIZE PLANS HAVE BEEN PREPARED USING STANDARD ENGINEERING SCALES. REDUCED SIZED PLANS WILL NOT CONFORM TO STANDARD SCALES. IN MAKING MEASUREMENTS ON REDUCED PLANS, THE ABOVE SCALES MAY BE USED.

J.U.L.I.E.
JOINT UTILITY LOCATION INFORMATION FOR EXCAVATION
1-800-892-0123 or www.julie1call.com

HERRIN TOWNSHIP
CONTRACT NO. 98884

GROSS LENGTH OF PROJECT = 0.13 MILES
NET LENGTH OF PROJECT = 0.13 MILES

PRINTED BY THE AUTHORITY
OF THE STATE OF ILLINOIS

STATE OF ILLINOIS
DEPARTMENT OF TRANSPORTATION
DIVISION OF HIGHWAYS

SUBMITTED Feb 17 2005
Man C. Lomis
DEPUTY DIRECTOR OF HIGHWAYS, REGION ENGINEER

March 25 2005
Mike Sine
ENGINEER OF DESIGN AND ENVIRONMENT

March 25 2005
Victor Maden
DIRECTOR, DIVISION OF HIGHWAYS

D9027047/D902704MS.DGN

(618) 549-2171
CENTREX 782-4554

PROJECT ENGINEER: SUSAN POE
SQUAD LEADER: SUSAN POE