

ROUTE	SECTION	COUNTY	TOTAL SHEETS	SHEET NO.
TR 1	02-01176-00-BR	PULASKI	10	2
PROJECT NO. BROS-153(27)			CONTRACT NO. 99230	

B.M. - RR Spike in 34" Oak Tree
65' Lt. Sta. 14+56
Elev. 361.36 (USGS)

Existing Structure - Timber deck with steel stringers on closed timber abutments.
13.0' W x 60.0' L

CURVE DATA
PI Sta = 10+01.67
 $\Delta = 11^{\circ}27'38''$
R = 499.94'

CURVE DATA
PI Sta = 13+60.86
 $\Delta = 39^{\circ}33'25''$ T = 90.56'
D = 22'45"00" L = 173.88'
R = 251.85' E = 15.79'

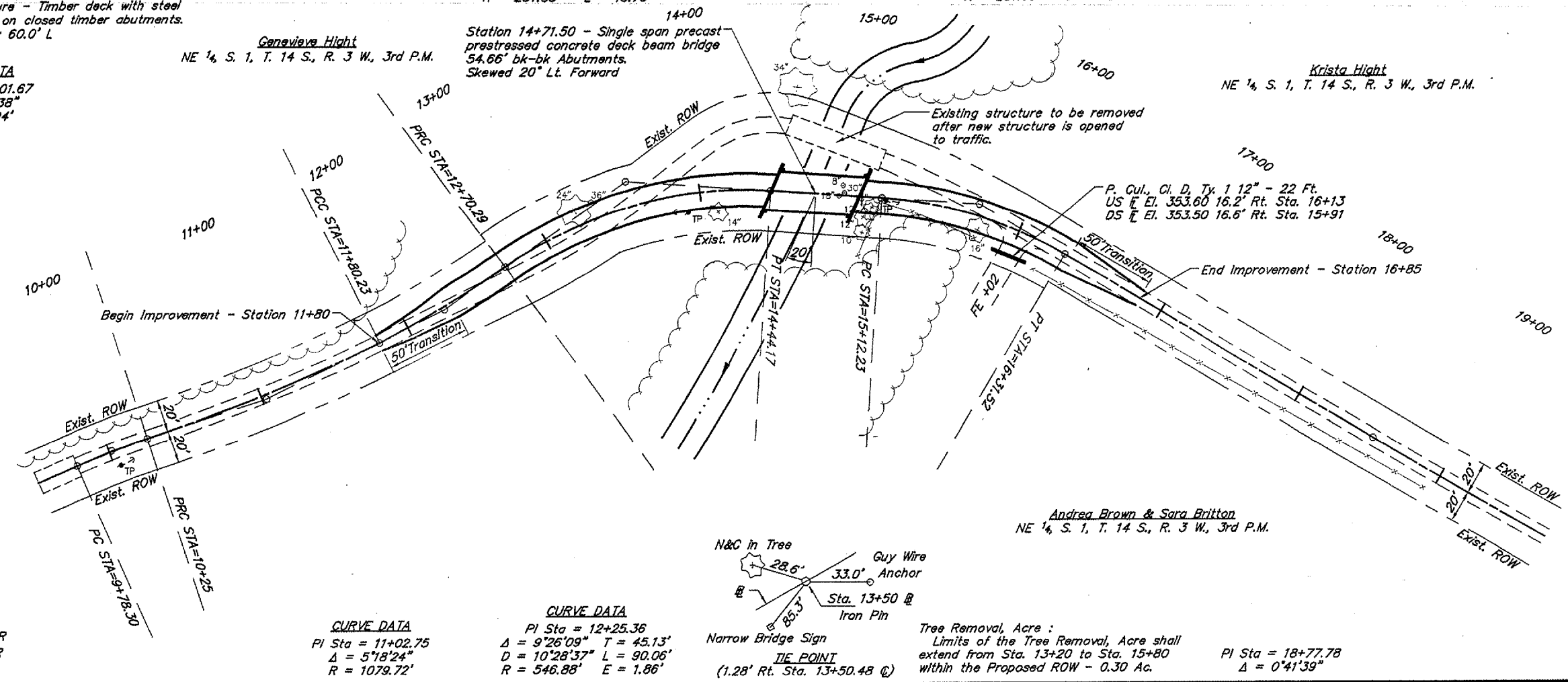
CURVE DATA
PI Sta = 15+73.01
 $\Delta = 27^{\circ}08'18''$ T = 60.79'
D = 22'45"00" L = 119.29'
R = 251.85' E = 7.23'

Genevieve Hight
NE 1/4 S. 1, T. 14 S., R. 3 W., 3rd P.M.

Station 14+71.50 - Single span precast prestressed concrete deck beam bridge
54.66' bk-bk Abutments.
Skewed 20° Lt. Forward

Krista Hight
NE 1/4 S. 1, T. 14 S., R. 3 W., 3rd P.M.

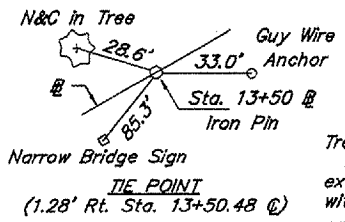
Andrea Brown & Sara Britton
NE 1/4 S. 1, T. 14 S., R. 3 W., 3rd P.M.



SCALES:
1" = 80' HOR
1" = 10' VER

CURVE DATA
PI Sta = 11+02.75
 $\Delta = 5^{\circ}18'24''$
R = 1079.72'

CURVE DATA
PI Sta = 12+25.36
 $\Delta = 9^{\circ}26'09''$ T = 45.13'
D = 10'28"37" L = 90.06'
R = 546.88' E = 1.86'



Tree Removal, Acre :
Limits of the Tree Removal, Acre shall extend from Sta. 13+20 to Sta. 15+80 within the Proposed ROW - 0.30 Ac.

PI Sta = 18+77.78
 $\Delta = 0^{\circ}41'39''$

