

**NOTES**

ALL TAXIWAY LIGHTS ARE TO BE LOCATED 10 FEET FROM THE CONCRETE PAVEMENT EDGE OF TAXIWAY "G" AND THE NEAR EDGE OF TAXIWAY SIGNS WILL BE LOCATED 15 FEET FROM THE EDGE.

REFER TO THE LIGHTING STANDARD SHEET AND SPECIFICATION FOR DETAILS FOR THE STAKE AND BASE LIGHT, AND TAXIWAY SIGNS.

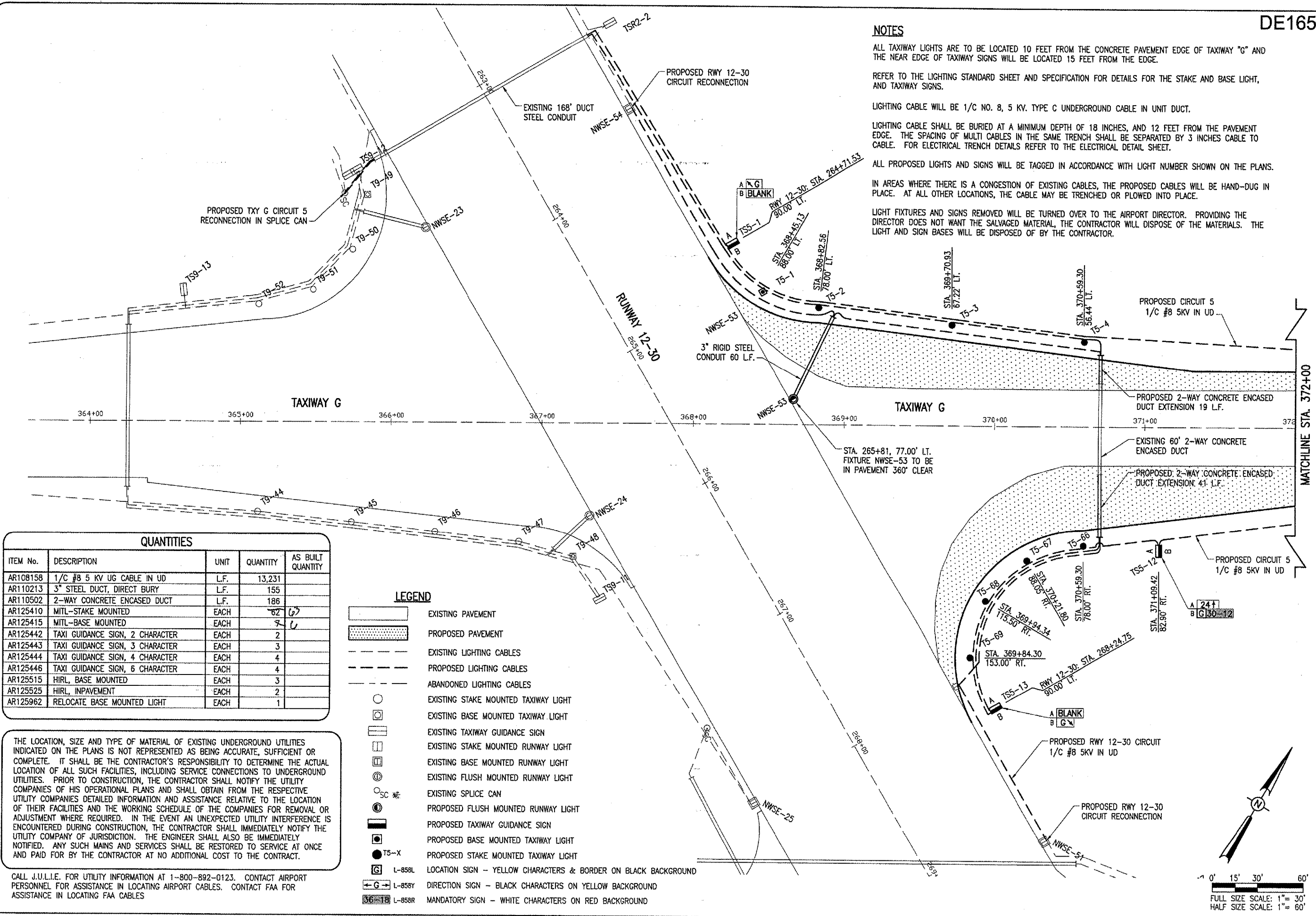
LIGHTING CABLE WILL BE 1/C NO. 8, 5 KV. TYPE C UNDERGROUND CABLE IN UNIT DUCT.

LIGHTING CABLE SHALL BE BURIED AT A MINIMUM DEPTH OF 18 INCHES, AND 12 FEET FROM THE PAVEMENT EDGE. THE SPACING OF MULTI CABLES IN THE SAME TRENCH SHALL BE SEPARATED BY 3 INCHES CABLE TO CABLE. FOR ELECTRICAL TRENCH DETAILS REFER TO THE ELECTRICAL DETAIL SHEET.

ALL PROPOSED LIGHTS AND SIGNS WILL BE TAGGED IN ACCORDANCE WITH LIGHT NUMBER SHOWN ON THE PLANS.

IN AREAS WHERE THERE IS A CONGESTION OF EXISTING CABLES, THE PROPOSED CABLES WILL BE HAND-DUG IN PLACE. AT ALL OTHER LOCATIONS, THE CABLE MAY BE TRENCHED OR PLOWED INTO PLACE.

LIGHT FIXTURES AND SIGNS REMOVED WILL BE TURNED OVER TO THE AIRPORT DIRECTOR. PROVIDING THE DIRECTOR DOES NOT WANT THE SALVAGED MATERIAL, THE CONTRACTOR WILL DISPOSE OF THE MATERIALS. THE LIGHT AND SIGN BASES WILL BE DISPOSED OF BY THE CONTRACTOR.



**QUANTITIES**

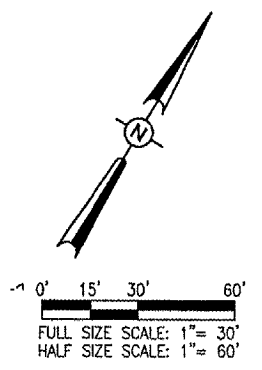
ITEM No.	DESCRIPTION	UNIT	QUANTITY	AS BUILT QUANTITY
AR108158	1/C #8 5 KV UG CABLE IN UD	L.F.	13,231	
AR110213	3" STEEL DUCT, DIRECT BURY	L.F.	155	
AR110502	2-WAY CONCRETE ENCASED DUCT	L.F.	186	
AR125410	MITL-STAKE MOUNTED	EACH	62	63
AR125415	MITL-BASE MOUNTED	EACH	7	6
AR125442	TAXI GUIDANCE SIGN, 2 CHARACTER	EACH	2	
AR125443	TAXI GUIDANCE SIGN, 3 CHARACTER	EACH	3	
AR125444	TAXI GUIDANCE SIGN, 4 CHARACTER	EACH	4	
AR125446	TAXI GUIDANCE SIGN, 6 CHARACTER	EACH	4	
AR125515	HIRL, BASE MOUNTED	EACH	3	
AR125525	HIRL, INPAVEMENT	EACH	2	
AR125962	RELOCATE BASE MOUNTED LIGHT	EACH	1	

**LEGEND**

- EXISTING PAVEMENT
- PROPOSED PAVEMENT
- EXISTING LIGHTING CABLES
- PROPOSED LIGHTING CABLES
- ABANDONED LIGHTING CABLES
- EXISTING STAKE MOUNTED TAXIWAY LIGHT
- EXISTING BASE MOUNTED TAXIWAY LIGHT
- EXISTING TAXIWAY GUIDANCE SIGN
- EXISTING STAKE MOUNTED RUNWAY LIGHT
- EXISTING BASE MOUNTED RUNWAY LIGHT
- EXISTING FLUSH MOUNTED RUNWAY LIGHT
- EXISTING SPLICE CAN
- PROPOSED FLUSH MOUNTED RUNWAY LIGHT
- PROPOSED TAXIWAY GUIDANCE SIGN
- PROPOSED BASE MOUNTED TAXIWAY LIGHT
- PROPOSED STAKE MOUNTED TAXIWAY LIGHT
- L-858L LOCATION SIGN - YELLOW CHARACTERS & BORDER ON BLACK BACKGROUND
- L-858Y DIRECTION SIGN - BLACK CHARACTERS ON YELLOW BACKGROUND
- L-858R MANDATORY SIGN - WHITE CHARACTERS ON RED BACKGROUND

THE LOCATION, SIZE AND TYPE OF MATERIAL OF EXISTING UNDERGROUND UTILITIES INDICATED ON THE PLANS IS NOT REPRESENTED AS BEING ACCURATE, SUFFICIENT OR COMPLETE. IT SHALL BE THE CONTRACTOR'S RESPONSIBILITY TO DETERMINE THE ACTUAL LOCATION OF ALL SUCH FACILITIES, INCLUDING SERVICE CONNECTIONS TO UNDERGROUND UTILITIES. PRIOR TO CONSTRUCTION, THE CONTRACTOR SHALL NOTIFY THE UTILITY COMPANIES OF HIS OPERATIONAL PLANS AND SHALL OBTAIN FROM THE RESPECTIVE UTILITY COMPANIES DETAILED INFORMATION AND ASSISTANCE RELATIVE TO THE LOCATION OF THEIR FACILITIES AND THE WORKING SCHEDULE OF THE COMPANIES FOR REMOVAL OR ADJUSTMENT WHERE REQUIRED. IN THE EVENT AN UNEXPECTED UTILITY INTERFERENCE IS ENCOUNTERED DURING CONSTRUCTION, THE CONTRACTOR SHALL IMMEDIATELY NOTIFY THE UTILITY COMPANY OF JURISDICTION. THE ENGINEER SHALL ALSO BE IMMEDIATELY NOTIFIED. ANY SUCH MAINS AND SERVICES SHALL BE RESTORED TO SERVICE AT ONCE AND PAID FOR BY THE CONTRACTOR AT NO ADDITIONAL COST TO THE CONTRACT.

CALL J.U.L.I.E. FOR UTILITY INFORMATION AT 1-800-892-0123. CONTACT AIRPORT PERSONNEL FOR ASSISTANCE IN LOCATING AIRPORT CABLES. CONTACT FAA FOR ASSISTANCE IN LOCATING FAA CABLES



DATE	REVISION

**DECATUR AIRPORT**  
**DECATUR, ILLINOIS**

IL PROJ.: DEC-3414 A.I.P. PROJ.: 3-17-0033-28

HE Project No. 802-04TXD  
 Filename R-142ELE.DWG  
 Scale 1"=30'  
 Date 03/17/05

LAYOUT	CCC	03/17/05
DRAWN	CCC	03/17/05
REVIEWED	WJM	06/07/05

**HANSON**  
 Engineers, Architects, Scientists  
 1526 South Sixth Street  
 Springfield, Illinois 62703-2888  
 Offices Nationwide

TAXIWAY G WIDENING  
 PHASE II  
 PROPOSED  
 ELECTRICAL PLAN  
 STA. 367+85.60 TO STA. 372+00

JUN 20, 2005 2:06 PM CCC  
 I:\AIRPORTS\DECATUR\802-04TXD\AIRPORT SHEETS\CONTRACT-1\R-142ELE.DWG - 367+85.60 TO 372