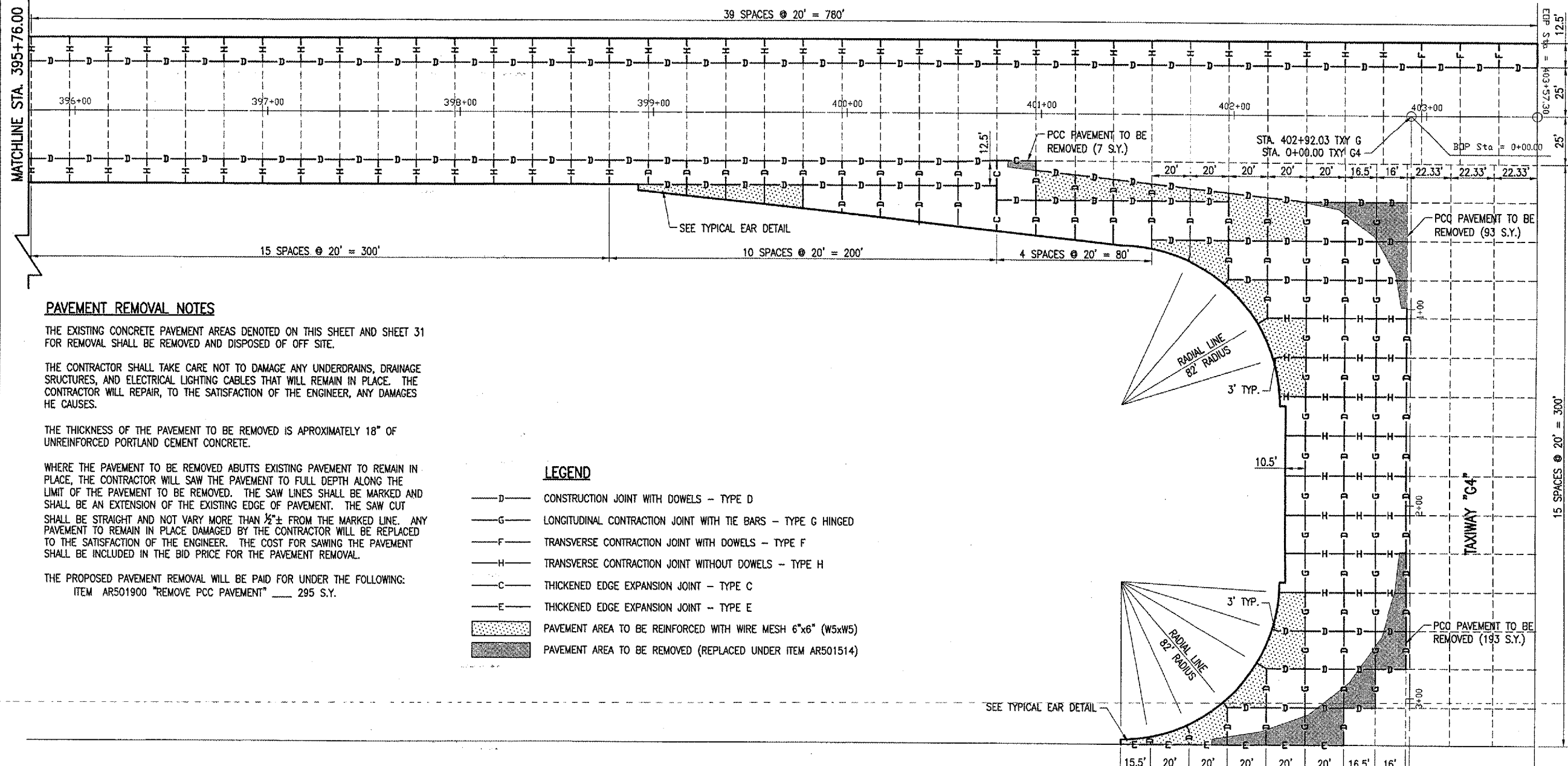


MATCHLINE STA. 395+76.00



**PAVEMENT REMOVAL NOTES**

THE EXISTING CONCRETE PAVEMENT AREAS DENOTED ON THIS SHEET AND SHEET 31 FOR REMOVAL SHALL BE REMOVED AND DISPOSED OF OFF SITE.

THE CONTRACTOR SHALL TAKE CARE NOT TO DAMAGE ANY UNDERDRAINS, DRAINAGE STRUCTURES, AND ELECTRICAL LIGHTING CABLES THAT WILL REMAIN IN PLACE. THE CONTRACTOR WILL REPAIR, TO THE SATISFACTION OF THE ENGINEER, ANY DAMAGES HE CAUSES.

THE THICKNESS OF THE PAVEMENT TO BE REMOVED IS APPROXIMATELY 18" OF UNREINFORCED PORTLAND CEMENT CONCRETE.

WHERE THE PAVEMENT TO BE REMOVED ABUTTS EXISTING PAVEMENT TO REMAIN IN PLACE, THE CONTRACTOR WILL SAW THE PAVEMENT TO FULL DEPTH ALONG THE LIMIT OF THE PAVEMENT TO BE REMOVED. THE SAW LINES SHALL BE MARKED AND SHALL BE AN EXTENSION OF THE EXISTING EDGE OF PAVEMENT. THE SAW CUT SHALL BE STRAIGHT AND NOT VARY MORE THAN 1/2" ± FROM THE MARKED LINE. ANY PAVEMENT TO REMAIN IN PLACE DAMAGED BY THE CONTRACTOR WILL BE REPLACED TO THE SATISFACTION OF THE ENGINEER. THE COST FOR SAWING THE PAVEMENT SHALL BE INCLUDED IN THE BID PRICE FOR THE PAVEMENT REMOVAL.

THE PROPOSED PAVEMENT REMOVAL WILL BE PAID FOR UNDER THE FOLLOWING:  
ITEM AR501900 "REMOVE PCC PAVEMENT" 295 S.Y.

**LEGEND**

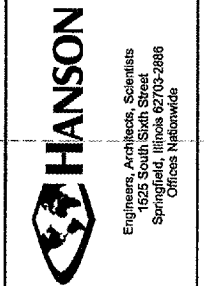
- D— CONSTRUCTION JOINT WITH DOWELS - TYPE D
- G— LONGITUDINAL CONTRACTION JOINT WITH TIE BARS - TYPE G HINGED
- F— TRANSVERSE CONTRACTION JOINT WITH DOWELS - TYPE F
- H— TRANSVERSE CONTRACTION JOINT WITHOUT DOWELS - TYPE H
- C— THICKENED EDGE EXPANSION JOINT - TYPE C
- E— THICKENED EDGE EXPANSION JOINT - TYPE E
- [Pattern] PAVEMENT AREA TO BE REINFORCED WITH WIRE MESH 6"x6" (W5xW5)
- [Pattern] PAVEMENT AREA TO BE REMOVED (REPLACED UNDER ITEM AR501514)

JUN 10, 2005 2:30 PM CCC  
I:\AIRPORTS\DECATUR\802-04TXWD\AIRPORT\SHEETS\CONTRACT-2\16-16\INT.DWG - STA. 395+77.30 TO 403+57.30

DATE	REVISION	BY



LAYOUT	W/M	10/28/04
DRAWN	CCC	10/28/04
REVIEWED	W/M	06/07/05



**TAXIWAY G WIDENING PHASE II**  
PROPOSED JOINTING PLAN  
STA. 395+77.30 TO 403+57.30

A.I.P. PROJ.: DEC-3414  
A.I.P. PROJ.: 3-17-0033-28