

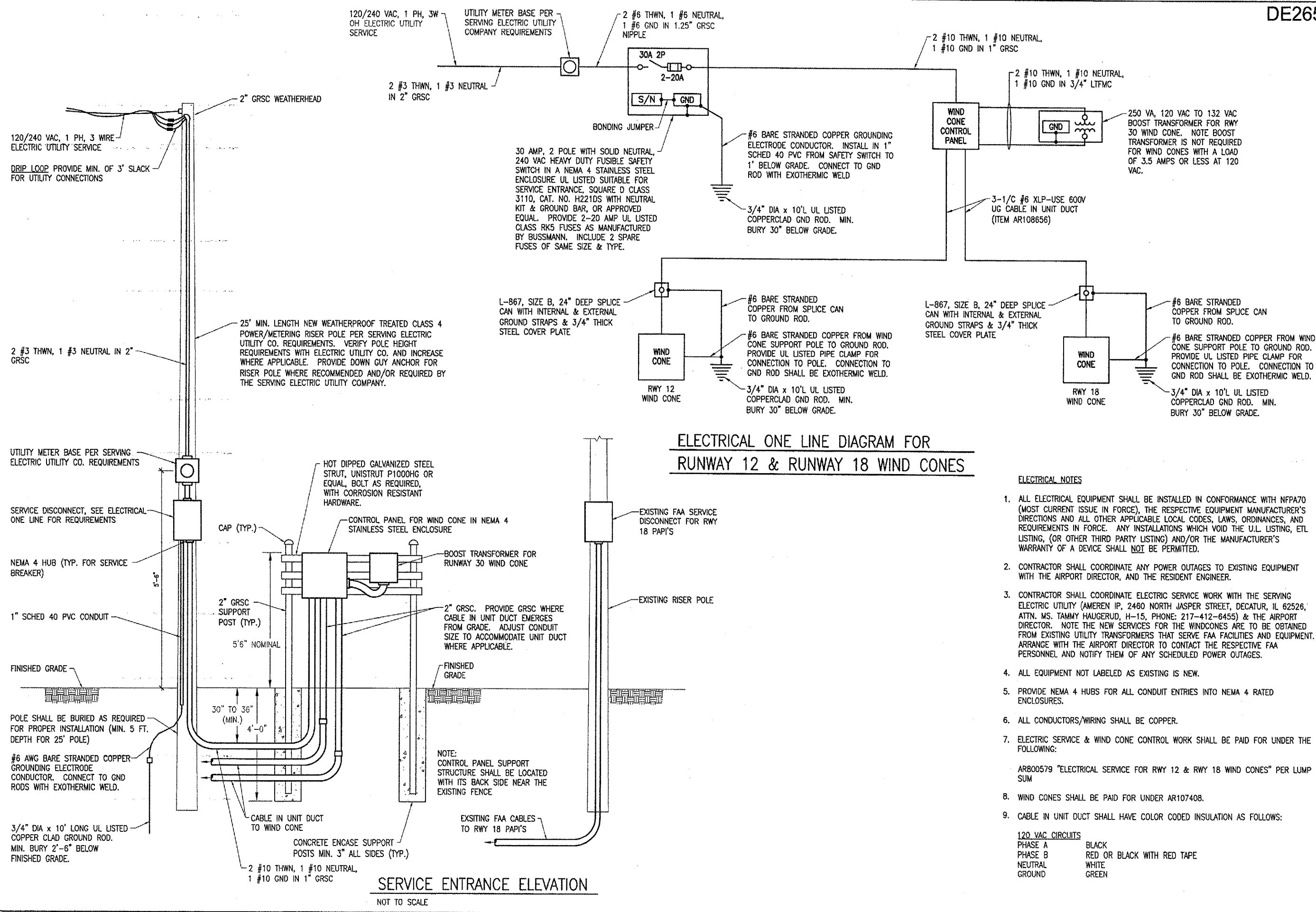
BY	
REVISION	
DATE	

DECATUR, ILLINOIS
 A.I.P. PROJ.: 3-17-0033-28
 I.L. PROJ.: DEC-3414

REV. PROJECT NO.	802-04TXD
DATE	04/22/05
BY	KNL
DATE	04/25/05
BY	MV
DATE	06/07/06
BY	CAH

HANSON
 Engineers, Architects, Scientists
 1925 South Stony Street
 Springfield, Illinois 62760-2886
 Offices Nationwide

TAXIWAY G WIDENING
 PHASE II
 ELECTRICAL ONE LINE
 DIAGRAM FOR RUNWAY 12
 & RUNWAY 18 WIND CONES



- ELECTRICAL NOTES**
- ALL ELECTRICAL EQUIPMENT SHALL BE INSTALLED IN CONFORMANCE WITH NFPA70 (MOST CURRENT ISSUE IN FORCE), THE RESPECTIVE EQUIPMENT MANUFACTURER'S DIRECTIONS AND ALL OTHER APPLICABLE LOCAL CODES, LAWS, ORDINANCES, AND REQUIREMENTS IN FORCE. ANY INSTALLATIONS WHICH VOID THE U.L. LISTING, ETL LISTING, (OR OTHER THIRD PARTY LISTING) AND/OR THE MANUFACTURER'S WARRANTY OF A DEVICE SHALL NOT BE PERMITTED.
 - CONTRACTOR SHALL COORDINATE ANY POWER OUTAGES TO EXISTING EQUIPMENT WITH THE AIRPORT DIRECTOR, AND THE RESIDENT ENGINEER.
 - CONTRACTOR SHALL COORDINATE ELECTRIC SERVICE WORK WITH THE SERVING ELECTRIC UTILITY (AMEREN IP, 2460 NORTH JASPER STREET, DECATUR, IL 62526; ATTN. MS. TAMMY HAUGERUD, H-15, PHONE: 217-412-6455) & THE AIRPORT DIRECTOR. NOTE THE NEW SERVICES FOR THE WINDCONES ARE TO BE OBTAINED FROM EXISTING UTILITY TRANSFORMERS THAT SERVE FAA FACILITIES AND EQUIPMENT. ARRANGE WITH THE AIRPORT DIRECTOR TO CONTACT THE RESPECTIVE FAA PERSONNEL AND NOTIFY THEM OF ANY SCHEDULED POWER OUTAGES.
 - ALL EQUIPMENT NOT LABELED AS EXISTING IS NEW.
 - PROVIDE NEMA 4 HUBS FOR ALL CONDUIT ENTRIES INTO NEMA 4 RATED ENCLOSURES.
 - ALL CONDUCTORS/WIRING SHALL BE COPPER.
 - ELECTRIC SERVICE & WIND CONE CONTROL WORK SHALL BE PAID FOR UNDER THE FOLLOWING:
 ARB00579 "ELECTRICAL SERVICE FOR RWY 12 & RWY 18 WIND CONES" PER LUMP SUM
 - WIND CONES SHALL BE PAID FOR UNDER AR107408.
 - CABLE IN UNIT DUCT SHALL HAVE COLOR CODED INSULATION AS FOLLOWS:
 120 VAC CIRCUITS
 PHASE A BLACK
 PHASE B RED OR BLACK WITH RED TAPE
 NEUTRAL WHITE
 GROUND GREEN

JUN 10, 2005 3:49 PM CCC
 I:\AIRPORTS\DECATUR\802-04TXD\AIRPORT_SHEETS\CONTRACT-2\E-602.DWG - Work-FLR