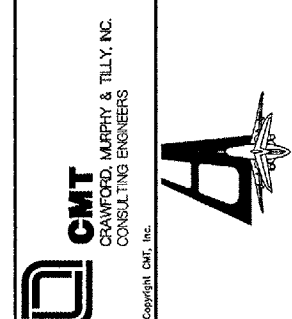


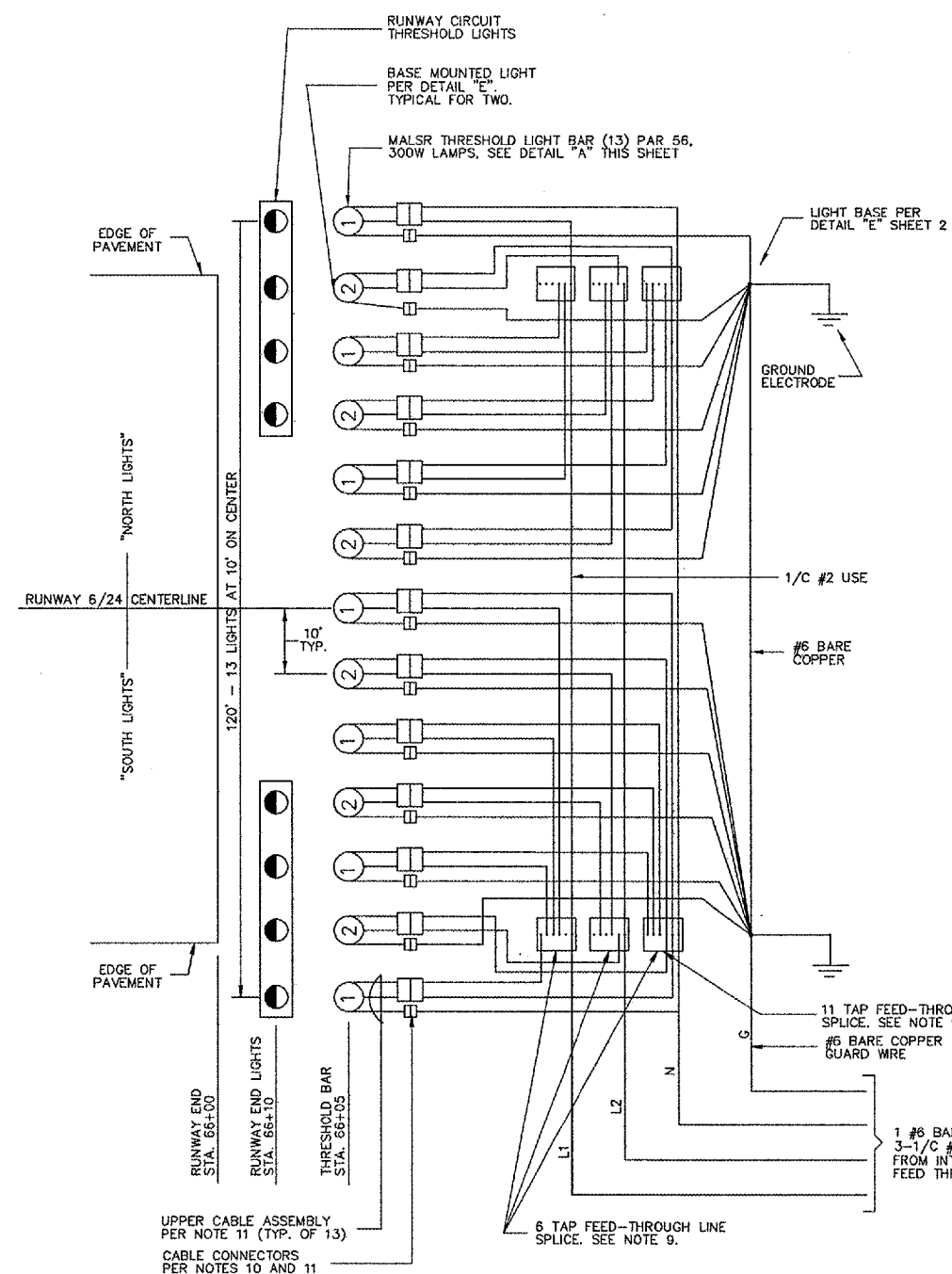
REVISIONS		
NUMBER	BY	DATE

0 1 2
 THIS BAR IS EQUAL TO 2"
 AT FULL SCALE (34X22).

**FREEPORT - ALBERTUS AIRPORT
 FREEPORT, ILLINOIS**
 ILLINOIS PROJECT: FEP-3132 / A.I.P. PROJECT: 3-17-0045-B16
**MALS FRANGIBLE THRESHOLD BAR
 SHEET 1**



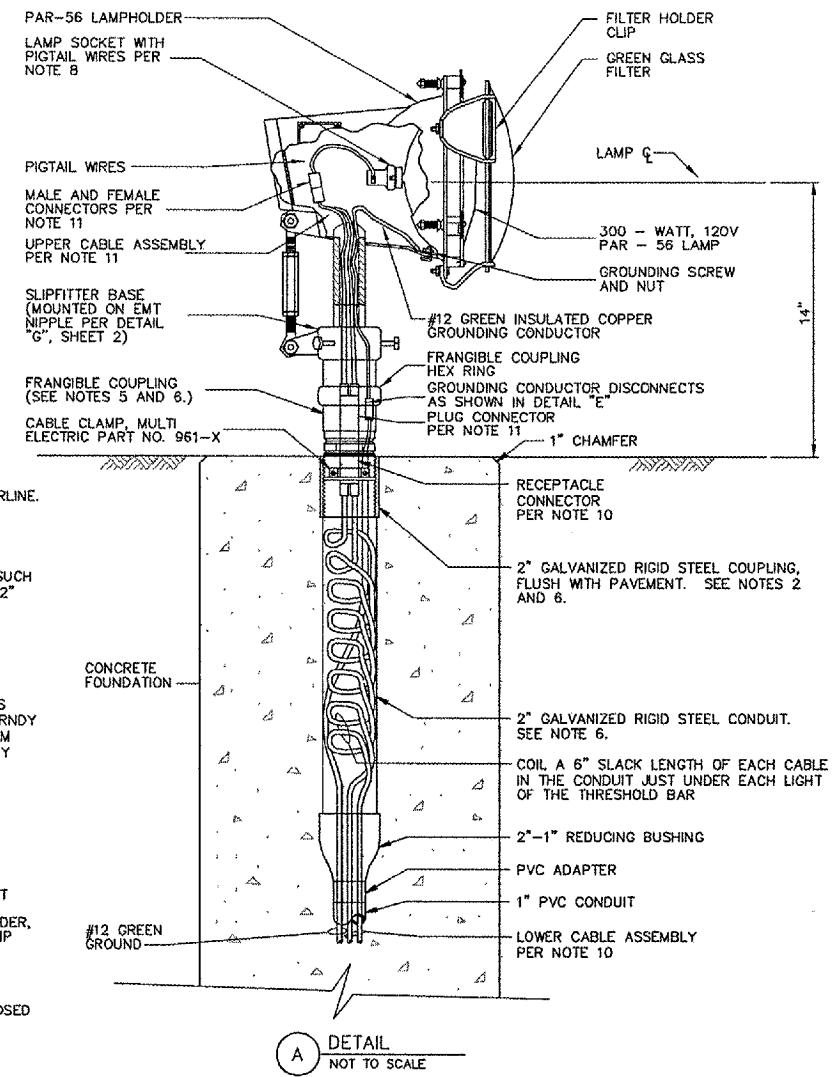
DESIGN BY:	
DRAWN BY:	
CHECKED BY:	
APPROVED BY:	
DATE:	06/17/05
JOB No:	02294-08
SHEET	17 OF 34 SHEETS



THRESHOLD BAR LAYOUT AND CABLING SCHEMATIC
 N.T.S.

NOTES:

- THE CONTRACTOR SHALL INSTALL THE THRESHOLD BAR SUCH THAT:
1. CONCRETE IS BROOM FINISHED.
 2. THE THRESHOLD BAR IS ON A LINE PERPENDICULAR TO RUNWAY CENTERLINE.
 3. THE LAMP HOLDERS ARE INSTALLED PER DETAILS "A" AND "E". LAMP ELEVATION WILL VARY WITH RUNWAY CROWN ELEVATION THROUGHOUT THE THRESHOLD BAR. THIS VARIATION IS PERMISSIBLE.
 4. THE 2" CONDUIT IS PLUMB, AND IS THREADED INTO THE 2" COUPLING SUCH THAT WHEN THE FRANGIBLE COUPLING IS THREADED TIGHTLY INTO THE 2" COUPLING, ONE THREAD OF THE FRANGIBLE COUPLING PROJECTS ABOVE THE TOP OF THE 2" COUPLING.
 5. EACH CABLE ENTERING OR EXITING A SPLICE HAS A 3' SLACK LOOP AT THE SPLICE.
 6. CONNECTIONS OF #10 CABLES TO #2 CABLES ARE MADE WITH BURNDY CAT. NO. YPC2ABU STREET LIGHTING TAPS. CONNECTIONS OF #2 CABLES TO 2/0 CABLES, IN FEED-THROUGH SPLICES ONLY, ARE MADE WITH BURNDY CAT. NO. YC26C2 COPPER CRIMPITS. SPLICE BODIES ARE MADE WITH 3M SCOTCHCAST MULTI-MOLD SPLICING KITS, 3M NO. 85-16. IF NECESSARY TO LENGTHEN THE SPLICE BODY, MORE THAN ONE 85-16 SPLICING KIT MAY BE JOINED LENGTHWISE.
 7. LOWER CABLE ASSEMBLY IS 2-1/2 #10 TYPE U.S.E. CABLES AND ELASTIMOLD WATERTIGHT RECEPTACLE CONNECTOR, STYLE 90R-B6. CONNECTOR OF LOWER CABLE ASSEMBLY IS HELD IN PLACE BY CABLE CLAMP PER DETAILS "A" AND "E".
 8. UPPER CABLE ASSEMBLY IS 2-1/2 #12 STRANDED TYPE THWN CABLES AND WATERTIGHT PLUG CONNECTOR, AMERACE CAT. NO. 90P-S6. JOINT BETWEEN PLUG AND RECEPTACLE CONNECTORS SHALL BE AT THE FRANGIBLE COUPLING BREAKOFF GROOVE. INSIDE THE PAR-56 LAMP HOLDER, THE UPPER CABLE ASSEMBLY MATES WITH THE PIGTAILS FROM THE LAMP SOCKET WITH MALE AND FEMALE CONNECTORS ARE SUPPLIED WITH THE PAR-56 LAMP HOLDER.
 9. WHERE SPECIFIC MANUFACTURERS OF EQUIPMENT ARE GIVEN, THE CONTRACTOR MAY SUBMIT ALTERNATE EQUIPMENT EQUAL TO THAT PROPOSED FOR CONSIDERATION BY THE ENGINEER.



(A) DETAIL
 NOT TO SCALE
 TYPICAL FRANGIBLE MALS THRESHOLD COUPLING-MOUNTED LIGHT INSTALLATION