



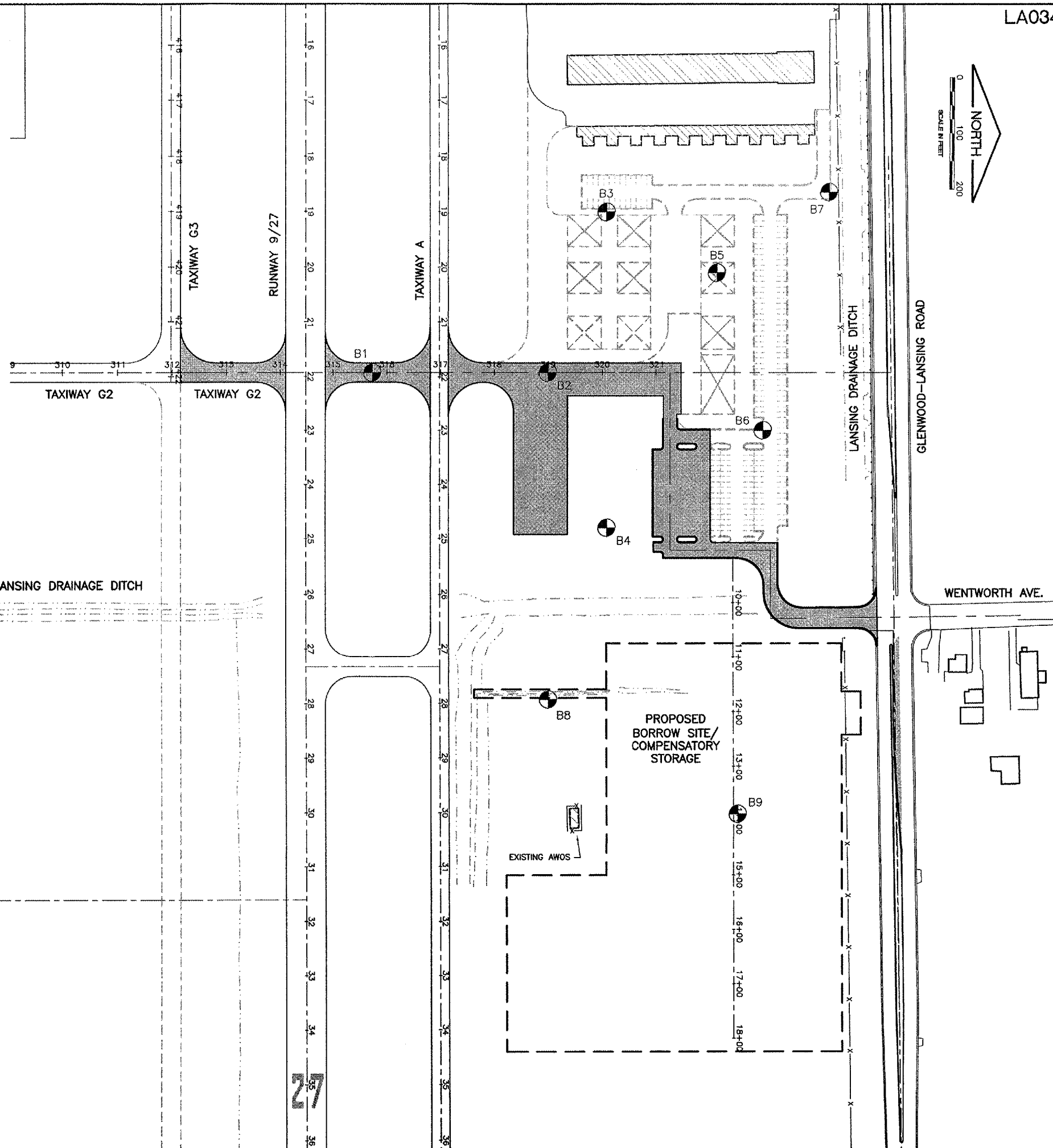


LEGEND

-  NEW PAVEMENT
-  FUTURE HANGAR
-  FUTURE PAVEMENT
-  PROPOSED SOIL BORING

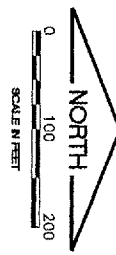
GEOTECHNICAL LAYOUT TABLE

BORING/CORE NO.	STATION	OFFSET RUNWAY C	DEPTH	ELEVATION
B1	315+75 TXY G2	CL	10'	610.83
B2	319+00 TXY G2	CL	10'	613.18
B3	19+00 TXY A	310' LT.	10'	613.19
B4	24+80 TXY A	310' LT.	10'	613.18
B5	20+10 TXY A	515' LT.	10'	613.03
B6	23+00 TXY A	600' LT.	10'	612.95
B7	18+50 TXY A	710' LT.	10'	612.94
B8	319+00 TXY G2	600' RT.	10'	612.99
B9	322+50 TXY G2	810' RT.	10'	613.29



LA034

PATH: K:\0329702\sheet\
 FILE: enginfo.dwg
 UPDATE BY: Johse
 SURVEY BOOK #
 XREF DWG:
 XREF DWG:
 DATE: Fri 3/26/04 2:18pm

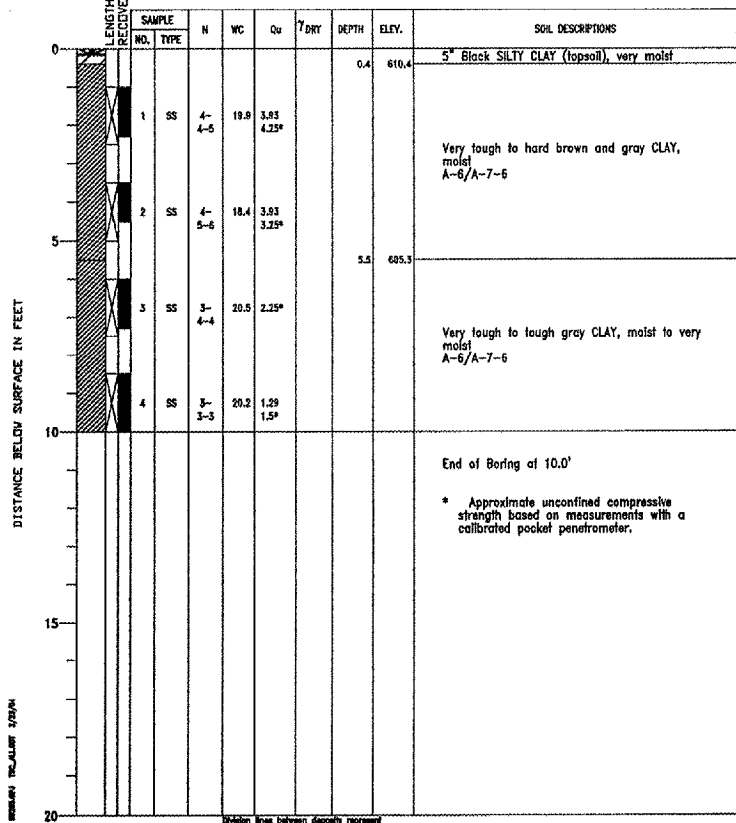


REVISIONS


NUMBER	BY	DATE

0 1 2
 THIS BAR IS EQUAL TO 2"
 AT FULL SCALE (34X22).

PROJECT Lansing Municipal Airport, N. Quadrant Hangar Development, Lansing, IL
 CLIENT Crawford, Murphy & Tilly, Inc., Aurora, Illinois
 BORING 1 DATE STARTED 11-12-03 DATE COMPLETED 11-12-03 JOB L-59,265
 ELEVATIONS GROUND SURFACE 610.8 WHILE DRILLING Dry
 END OF BORING 600.8 AT END OF BORING Dry
 WATER LEVEL OBSERVATIONS Dry
 TSC



**LANSING MUNICIPAL AIRPORT
 LANSING, ILLINOIS
 NORTH QUADRANT SITEWORK - PHASE 1
 AND TAXIWAY G2 EXTENSION
 ENGINEERING INFORMATION - SHEET 1**

© Copyright GMT, Inc.
GMT
 CRAWFORD, MURPHY & TILLY, INC.
 CONSULTING ENGINEERS
 License No. 184-000613


DESIGN BY:	ARM
DRAWN BY:	JRO
CHECKED BY:	ARM
APPROVED BY:	
DATE:	03/04/05
JOB No:	03297-02
IL PROJECT:	IGQ-3329
A.I.P. PROJECT:	3-17-0121-B21
SHEET	45 OF 50 SHEETS