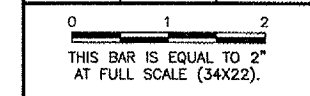


PATH: K:\0029002\draw\01-11-02\
 FILE: pp1.dwg
 UPDATE BY: johse
 SURVEY BOOK #
 XREF DWG:
 XREF DWG:
 DATE: Mon 2/4/02 11:40am

REVISIONS		
NUMBER	BY	DATE



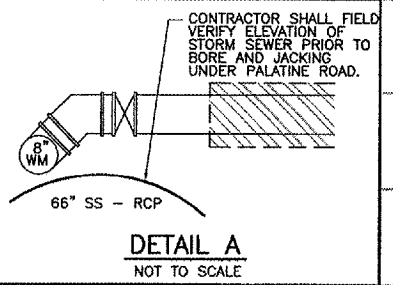
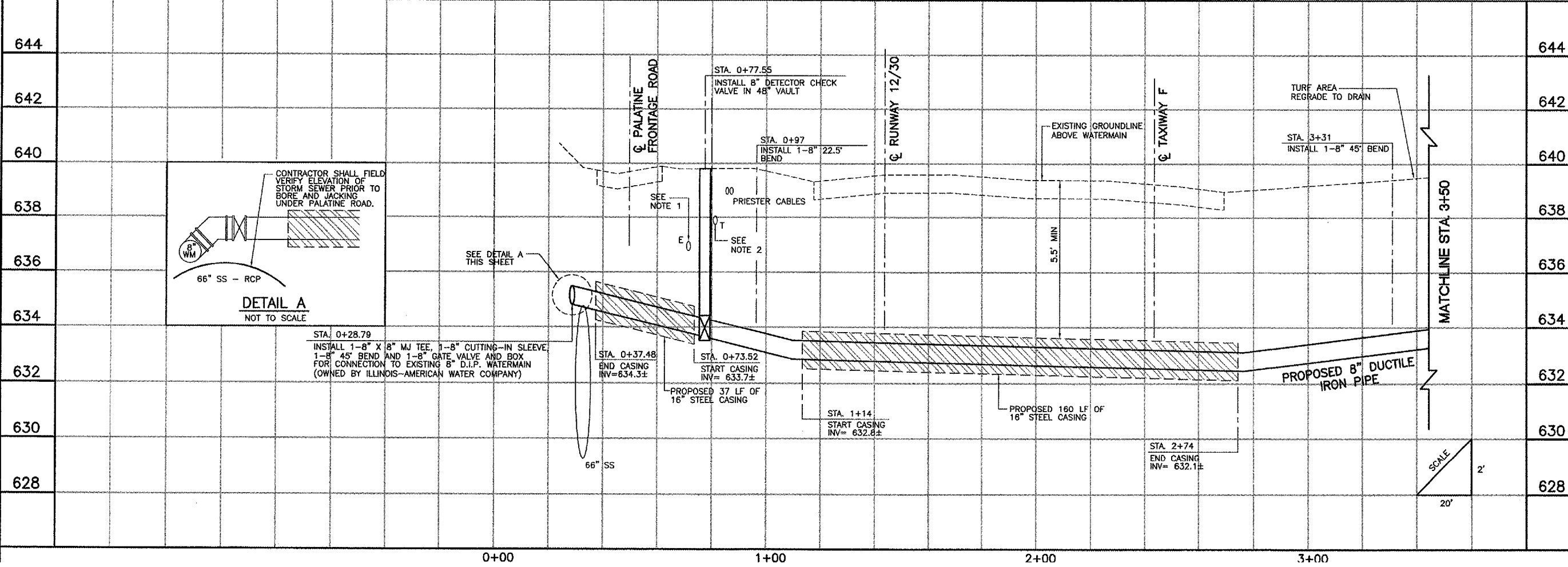
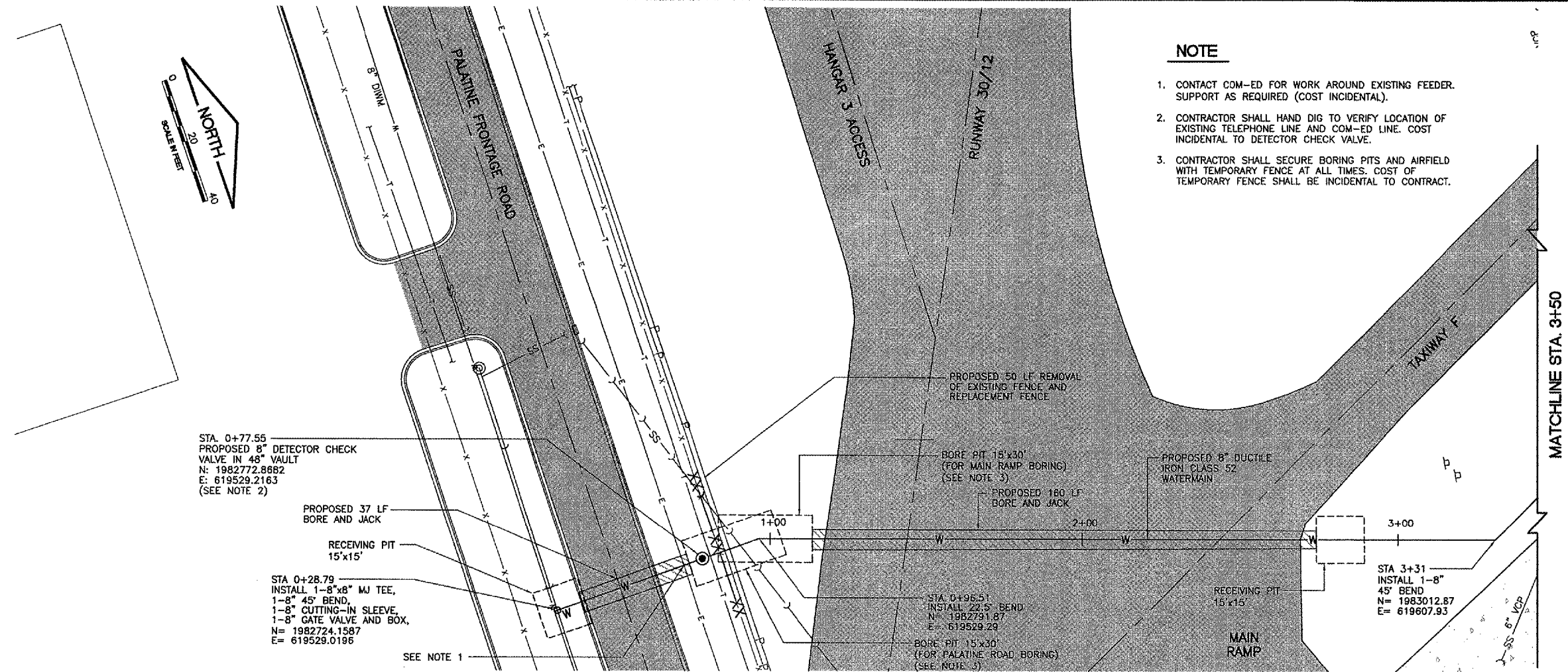
**PALWAUKEE MUNICIPAL AIRPORT
 CONSTRUCT SOUTHEAST QUADRANT FIRE
 PROTECTION SYSTEM
 PLAN AND PROFILE
 STA. 0+28.79 TO STA. 3+50**

© Copyright GMT, Inc.
GMT
 CRAWFORD, MURPHY & TILLY, INC.
 CONSULTING ENGINEERS
 License No. 184-000613

DESIGN BY:	MAB
DRAWN BY:	MAB/JRO
CHECKED BY:	DJK
APPROVED BY:	BDH
DATE:	05/25/05
JOB No:	00290-02

NOTE

- CONTACT COM-ED FOR WORK AROUND EXISTING FEEDER. SUPPORT AS REQUIRED (COST INCIDENTAL).
- CONTRACTOR SHALL HAND DIG TO VERIFY LOCATION OF EXISTING TELEPHONE LINE AND COM-ED LINE. COST INCIDENTAL TO DETECTOR CHECK VALVE.
- CONTRACTOR SHALL SECURE BORING PITS AND AIRFIELD WITH TEMPORARY FENCE AT ALL TIMES. COST OF TEMPORARY FENCE SHALL BE INCIDENTAL TO CONTRACT.



STA. 0+28.79
 INSTALL 1-8" X 8" MJ TEE, 1-8" CUTTING-IN SLEEVE, 1-8" 45° BEND AND 1-8" GATE VALVE AND BOX FOR CONNECTION TO EXISTING 8" D.I.P. WATERMAIN (OWNED BY ILLINOIS-AMERICAN WATER COMPANY)

STA. 0+37.48
 END CASING
 INV= 634.3±

STA. 0+73.52
 START CASING
 INV= 633.7±

STA. 1+14
 START CASING
 INV= 632.8±

STA. 2+74
 END CASING
 INV= 632.1±

