



REVISIONS		
NUMBER	BY	DATE



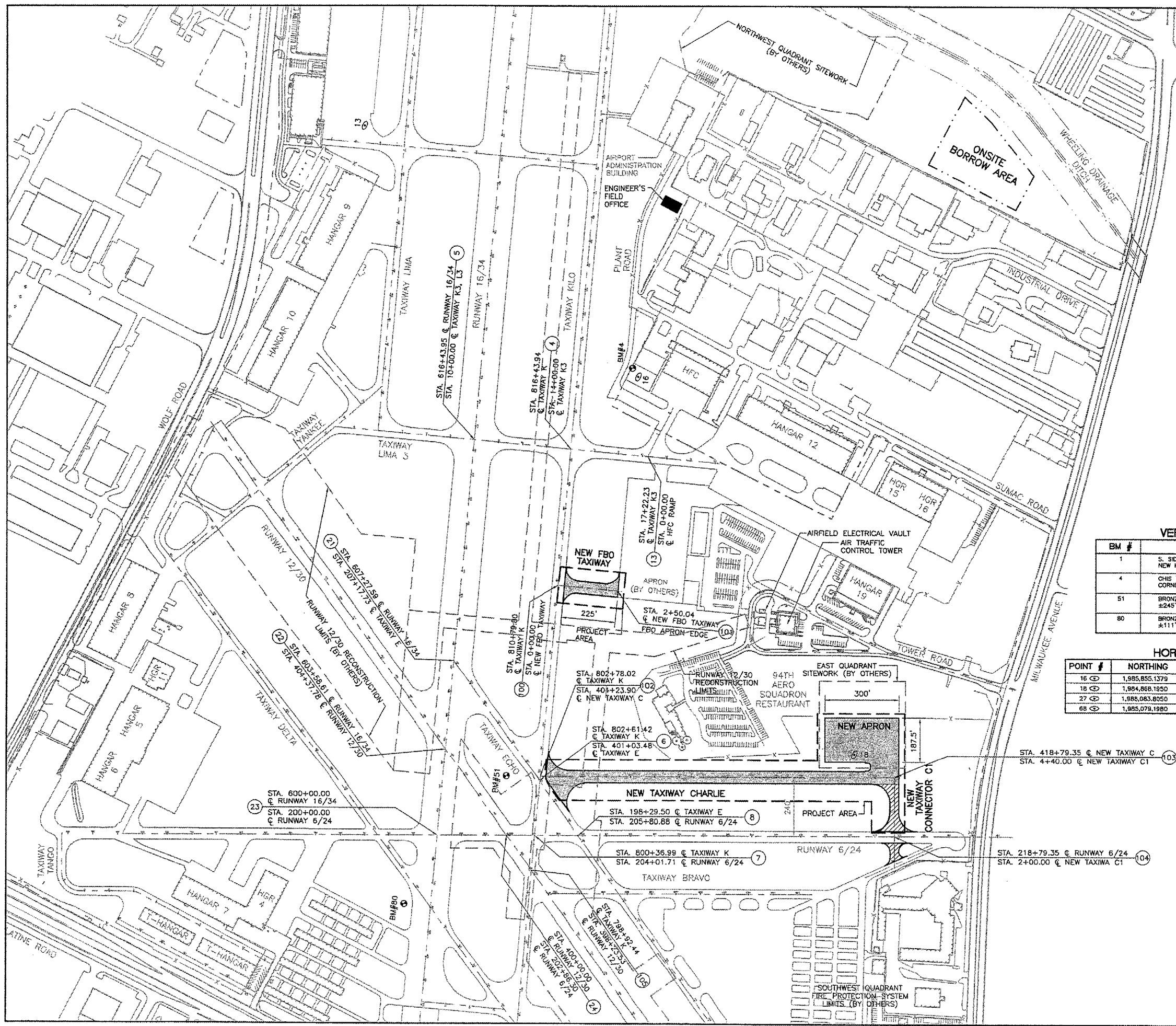
- LEGEND**
- NEW BITUMINOUS PAVEMENT
 - NEW 10" PCC PAVEMENT
 - AIRPORT PROPERTY LINE
 - EXISTING FENCE LINE
 - PROPOSED BORROW SITE
 - PROPOSED PROJECT LIMITS
 - PROJECT LIMITS (BY OTHERS)

VERTICAL CONTROL TABLE

BM #	LOCATION	ELEVATION
1	S. SIDE HEADWALL S. OF SW CORNER OF NEW HINTZ ROAD BRIDGE, CHIS "J"	638.62
4	CHIS "J" W. SIDE LIGHT POLE BASE AT SW CORNER PARKING LOT.	641.59
51	BRONZE DISC ±150' N. OF RUNWAY 12/30 ±245' N.E. OF RUNWAY 16/34	641.51
80	BRONZE DISC ±74' S.W. OF TAXIWAY D ±111' W. OF RUNWAY 16/34	642.62

HORIZONTAL CONTROL TABLE

POINT #	NORTHING	EASTING	DESCRIPTION
16	1,985,855.1379	617,111.5731	CHS "X" ON B.O.C.
18	1,984,868.1950	618,606.0940	IR ON BERM ALONG 94TH ENTRANCE DRIVE
27	1,988,083.8050	616,435.7710	CHS "X" B.O.C. S. SIDE OF NEW HINTZ ROAD
68	1,985,078.1980	615,836.4740	PK IN ASPHALT SERVICE ROAD TO RUNWAY 12



**PALWAUKEE MUNICIPAL AIRPORT
 WHEELING/PROSPECT HEIGHTS, ILLINOIS**
**CONSTRUCT TAXIWAY CHARLIE AND EAST QUADRANT APRON
 SITE PLAN/PROJECT CONTROL PLAN**

Copyright © 2005, CMT, Inc.

CMT
 CRAWFORD, MARPHY & TILLY, INC.
 CONSULTING ENGINEERS
 License No. 184-000618

DESIGN BY:	JRL
DRAWN BY:	JRO
CHECKED BY:	
APPROVED BY:	
DATE:	06/24/05
JOB No:	04290-03
ILLINOIS PROJECT:	PWK-3481
A.I.P. PROJECT:	3-17-0018-BXX
SHEET	3 OF 38 SHEETS