

UN043

K:\Champaign\0305903\Draw'sheets\
 FILE: 11_Phase2-TempMark.dwg
 LAYOUT: Layout1
 UPDATE BY: adraughan
 SURVEY BOOK #
 DATE: Thu 6/16/05 2:02pm
 XREF DWG: CMIBaseEQPEL.dwg
 Cinfo.dwg
 tb.dwg
 baselines.dwg

REVISIONS

NUMBER	BY	DATE

0 1 2
 THIS BAR IS EQUAL TO 2"
 AT FULL SCALE (34X22).

UNIVERSITY OF ILLINOIS
 WILLARD AIRPORT
 REHABILITATE AIR CARRIER RAMP
 CONSTRUCTION ACTIVITY PLAN
 PHASE 2 MARKING

© Copyright CMT, Inc.
CMT
 CRAWFORD, MERRY & TILLY, INC.
 CONSULTING ENGINEERS
 License No. 194-000615

DESIGN BY: CMT

DRAWN BY: CMT

CHECKED BY: SMS

APPROVED BY: [Signature]

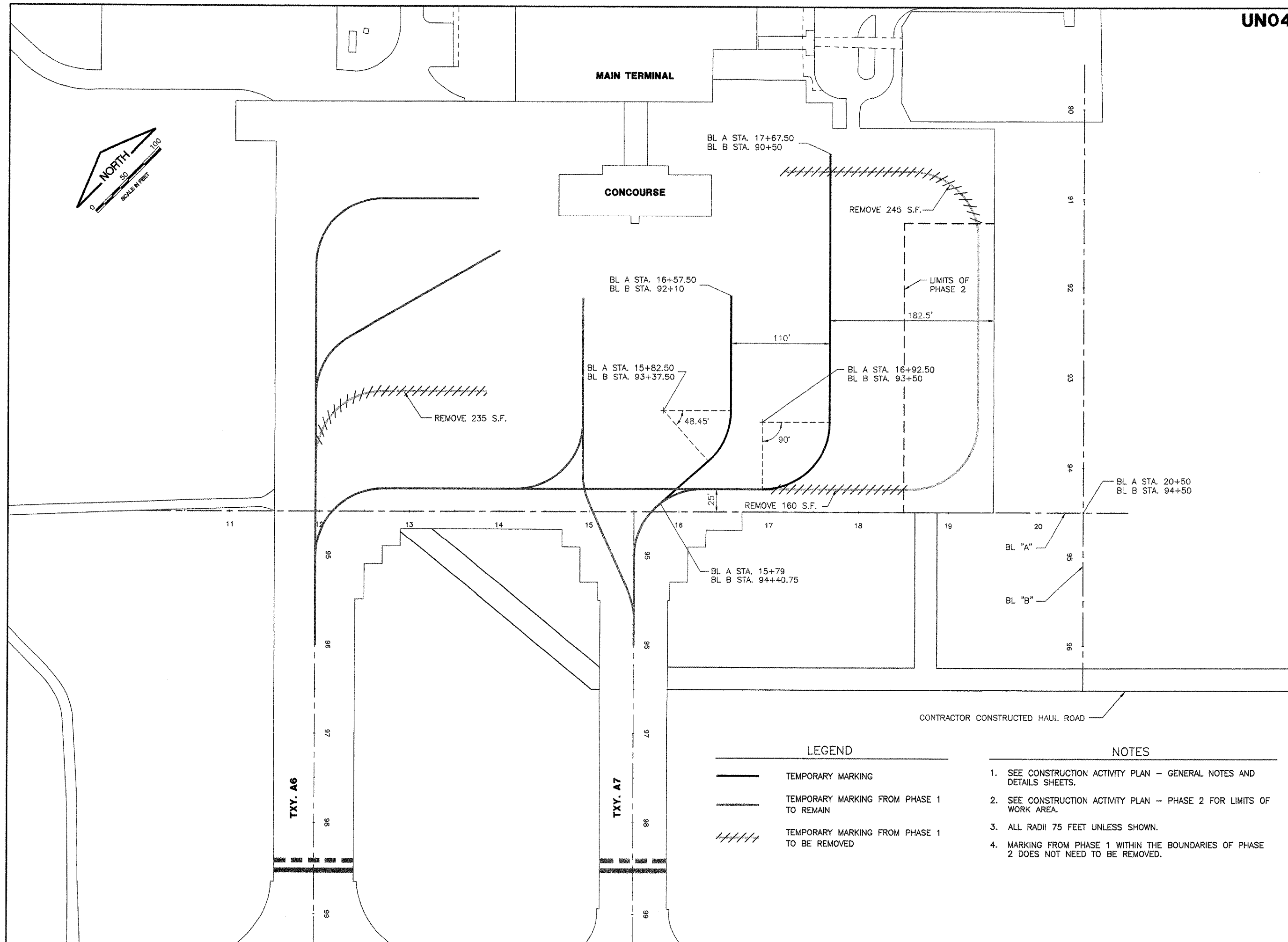
DATE: 08/10/2005

JOB No: 03059-03-00

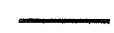

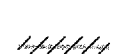
IL PROJECT: CMI-3449

A.I.P. PROJECT: 3-17-0016-22

SHEET 11 OF 58 SHEETS



LEGEND

-  TEMPORARY MARKING
-  TEMPORARY MARKING FROM PHASE 1 TO REMAIN
-  TEMPORARY MARKING FROM PHASE 1 TO BE REMOVED

NOTES

1. SEE CONSTRUCTION ACTIVITY PLAN - GENERAL NOTES AND DETAILS SHEETS.
2. SEE CONSTRUCTION ACTIVITY PLAN - PHASE 2 FOR LIMITS OF WORK AREA.
3. ALL RADII 75 FEET UNLESS SHOWN.
4. MARKING FROM PHASE 1 WITHIN THE BOUNDARIES OF PHASE 2 DOES NOT NEED TO BE REMOVED.