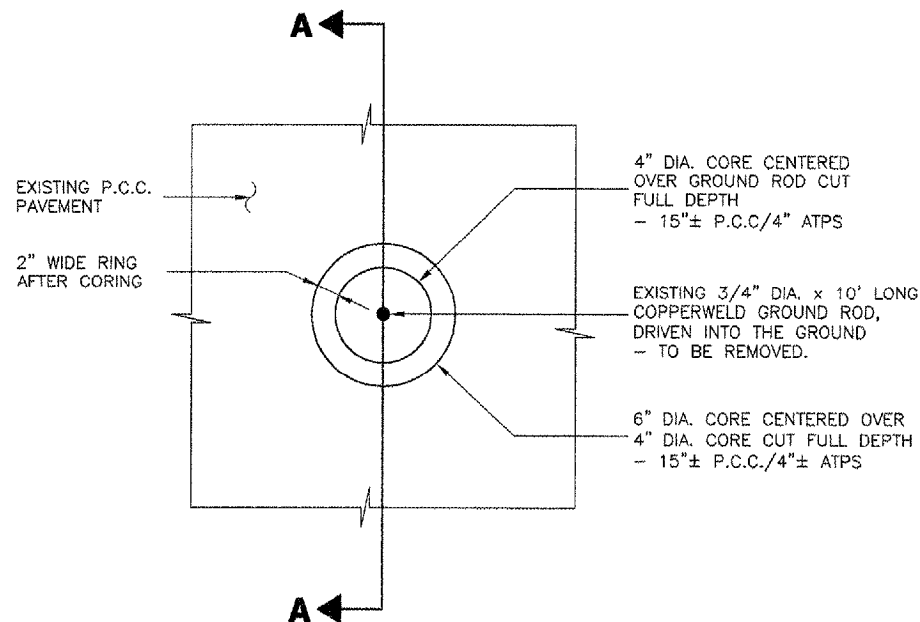
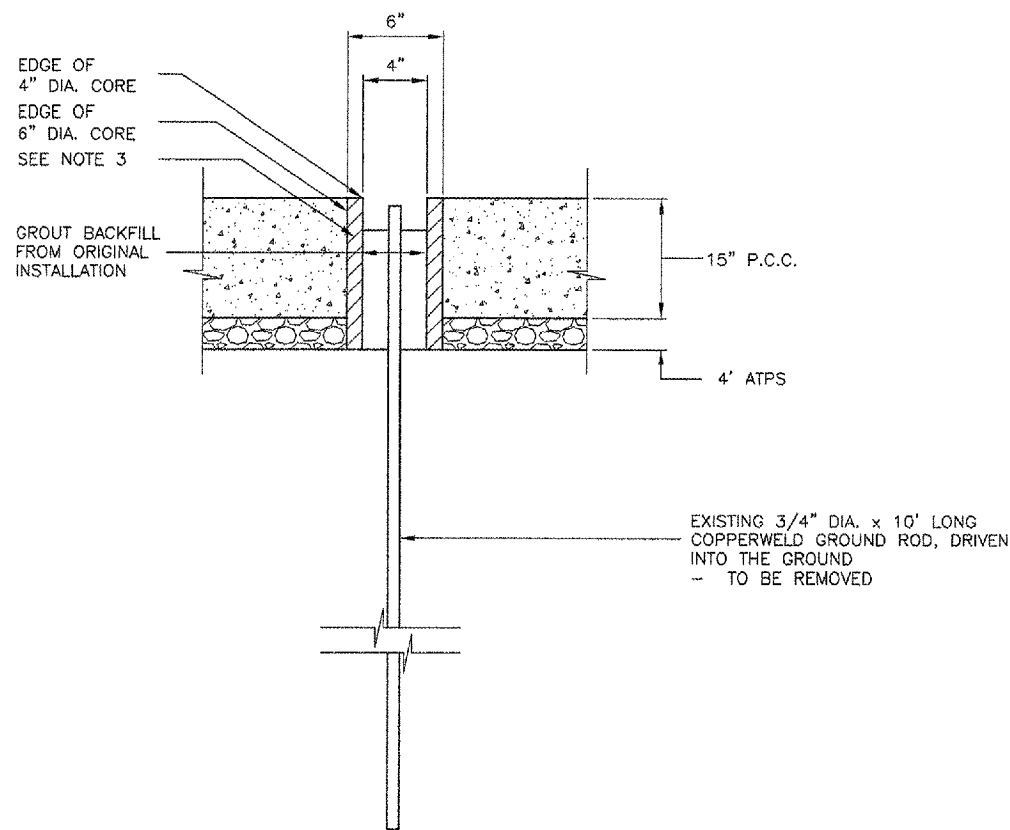


NOTE:
 ANY DAMAGE TO EXISTING CURB NOT SCHEDULED FOR REMOVAL TO BE REPAIRED BY THE CONTRACTOR TO THE SATISFACTION OF THE AIRPORT AT NO EXPENSE TO THE CONTRACT.

CURB ADJACENT TO CONCOURSE
TYPICAL DETAIL
 N.T.S.



PLAN VIEW



SECTION A-A

GROUND ROD REMOVAL DETAIL
 N.T.S.

REMOVAL NOTES

1. CUT 4" DIAMETER CORE FULL DEPTH WITH CORING MACHINE.
2. CUT 6" DIAMETER CORE FULL DEPTH WITH CORING MACHINE.
3. REMOVE 2" WIDE RING.
4. POSITION STRAP OR CHAIN AROUND BOTTOM OF GROUT BACKFILL.
5. PULL STRAP/CHAIN AND GROUND ROD STRAIGHT OUT OF GROUND.
6. CONTRACTOR MAY PROPOSE ALTERNATE REMOVAL METHODS FOR APPROVAL BY THE ENGINEER PROVIDED THE METHOD DOES NOT CAUSE/REQUIRE MORE REMOVAL OF THE EXISTING PAVEMENT THAN IS SHOWN.

REVISIONS

NUMBER	BY	DATE

0 1 2
 THIS BAR IS EQUAL TO 2"
 AT FULL SCALE (34X22).

UNIVERSITY OF ILLINOIS
 WILLARD AIRPORT

REHABILITATE AIR CARRIER RAMP
 MISCELLANEOUS REMOVAL DETAILS

© Copyright CMT, Inc.
CMT
 CRAWFORD, MURPHY & TELY, INC.
 CONSULTING ENGINEERS
 License No. 184-000618

DESIGN BY: CMT
 DRAWN BY: CMT
 CHECKED BY: SMS
 APPROVED BY: *[Signature]*
 DATE: 06/10/2005
 JOB No: 03059-03-00

IL PROJECT: CM-3449
 A.I.P. PROJECT: 3-17-0016-22