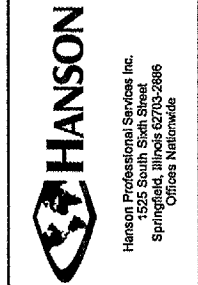


DATE	REVISION	BY

VANDALIA MUNICIPAL AIRPORT  
VANDALIA, ILLINOIS

IL PROJ.: VLA-3432 A.I.P. PROJ.: 3-17-0102-88

ILE Project No. 830-058PND-0800	
Drawn: R-19 LSTK.DWG	
Scale: 1" = 30'	
Date: 03/23/05	
LAYOUT	BKB 03/23/05
DRAWN	BAK 03/23/05
REVIEWED	CAH xx/xx/xx



APRON AND TAXIWAYS  
RECONSTRUCTION

PROPOSED  
APRON  
STAKING PLAN

**908 MULCHING NOTES**

THE PROPOSED MULCHING SHALL BE ACCOMPLISHED IN ACCORDANCE WITH ITEM 908 "MULCHING" AS STATED ON PAGE 127 OF THE SUPPLEMENTAL SPECIFICATIONS AND RECURRING SPECIAL PROVISIONS, ADOPTED JULY 1, 2004.

THIS ITEM SHALL CONSIST OF THE FURNISHING, TRANSPORTING, AND PLACING MULCH OVER THE SEEDED AREA. DISTURBED AREAS OUTSIDE THE GRADING LIMITS SHALL ALSO BE MULCHED AND PARTICIPATION WILL BE THE SAME AS FOR SEEDED AREAS.

908-2.1 MULCH MATERIAL: THE CONTRACTOR MAY EITHER FURNISH STRAW OR HYDROMULCH AS THE TYPE OF MULCH MATERIAL TO BE USED ON THIS PROJECT.

908-3.1 MULCHING: THE HYDRAULIC MULCH SHALL BE APPLIED AS A SLURRY OF 2,500 POUNDS OF MULCH AND NOT LESS THAN 2,500 GALLONS OF WATER PER ACRE.

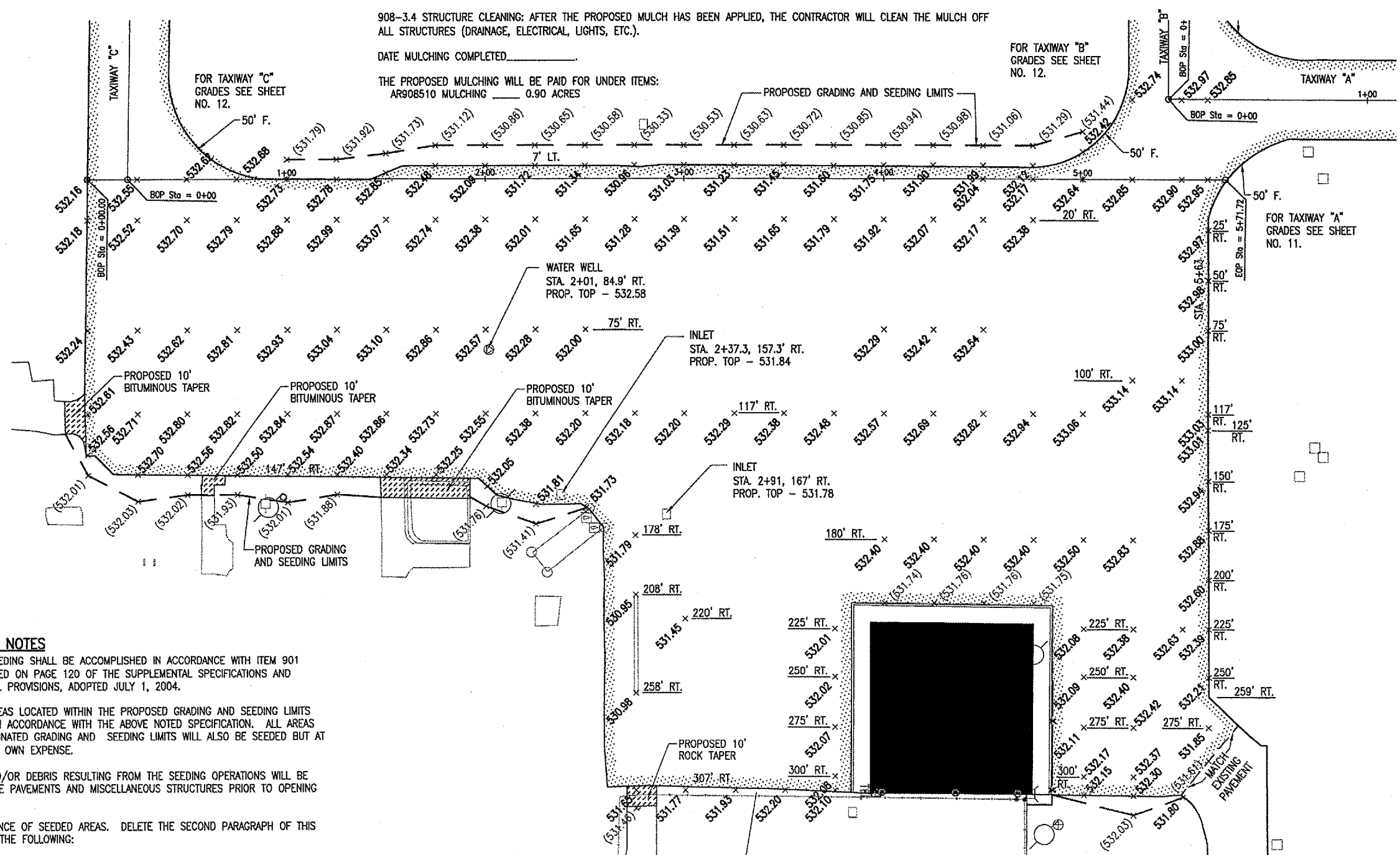
908-3.4 STRUCTURE CLEANING: AFTER THE PROPOSED MULCH HAS BEEN APPLIED, THE CONTRACTOR WILL CLEAN THE MULCH OFF ALL STRUCTURES (DRAINAGE, ELECTRICAL, LIGHTS, ETC.).

DATE MULCHING COMPLETED \_\_\_\_\_

THE PROPOSED MULCHING WILL BE PAID FOR UNDER ITEMS:  
AR908510 MULCHING 0.90 ACRES

**LEGEND**

- EXISTING IMPROVEMENTS
- PROPOSED IMPROVEMENTS
- EXISTING BUILDING
- PROPOSED SEEDING AND MULCHING LIMITS
- 530.79 EXISTING GRADE
- 530.79 PROPOSED GRADE



**901 SEEDING NOTES**

THE PROPOSED SEEDING SHALL BE ACCOMPLISHED IN ACCORDANCE WITH ITEM 901 "SEEDING" AS STATED ON PAGE 120 OF THE SUPPLEMENTAL SPECIFICATIONS AND RECURRING SPECIAL PROVISIONS, ADOPTED JULY 1, 2004.

ALL DISTURBED AREAS LOCATED WITHIN THE PROPOSED GRADING AND SEEDING LIMITS WILL BE SEEDING IN ACCORDANCE WITH THE ABOVE NOTED SPECIFICATION. ALL AREAS OUTSIDE THE DESIGNATED GRADING AND SEEDING LIMITS WILL ALSO BE SEEDING BUT AT THE CONTRACTOR'S OWN EXPENSE.

ALL MATERIALS AND/OR DEBRIS RESULTING FROM THE SEEDING OPERATIONS WILL BE REMOVED FROM THE PAVEMENTS AND MISCELLANEOUS STRUCTURES PRIOR TO OPENING THE RUNWAY.

901-3.4 MAINTENANCE OF SEEDED AREAS. DELETE THE SECOND PARAGRAPH OF THIS SECTION AND ADD THE FOLLOWING:

"THE CONTRACTOR WILL BE REQUIRED TO ESTABLISH A GOOD STAND OF GRASS OF UNIFORM COLOR AND DENSITY TO THE SATISFACTION OF THE RESIDENT ENGINEER. IF AT THE TIME WHEN THE CONTRACT HAS BEEN OTHERWISE COMPLETED, IT IS NOT POSSIBLE TO MAKE AN ADEQUATE DETERMINATION OF COLOR, DENSITY, AND UNIFORMITY OF SUCH STAND OF GRASS, THE ITEM OF WORK WILL BE REVIEWED AT A LATER DATE DETERMINED BY THE ILLINOIS DIVISION OF AERONAUTICS."

DATE SEEDING COMPLETED \_\_\_\_\_

THE PROPOSED SEEDING WILL BE PAID FOR UNDER ITEMS: AR901510 SEEDING 0.90 ACRES

**SEEDING QUANTITIES**

ITEM NO.	DESCRIPTION	UNIT	QUANTITY
AR901510	SEEDING	ACRE	0.90
AR908510	MULCHING	ACRE	0.90

