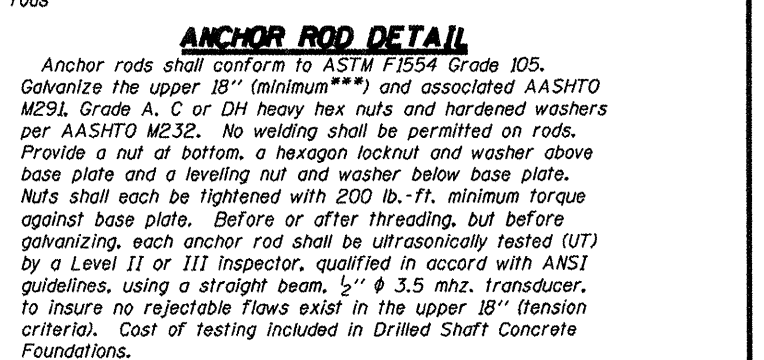
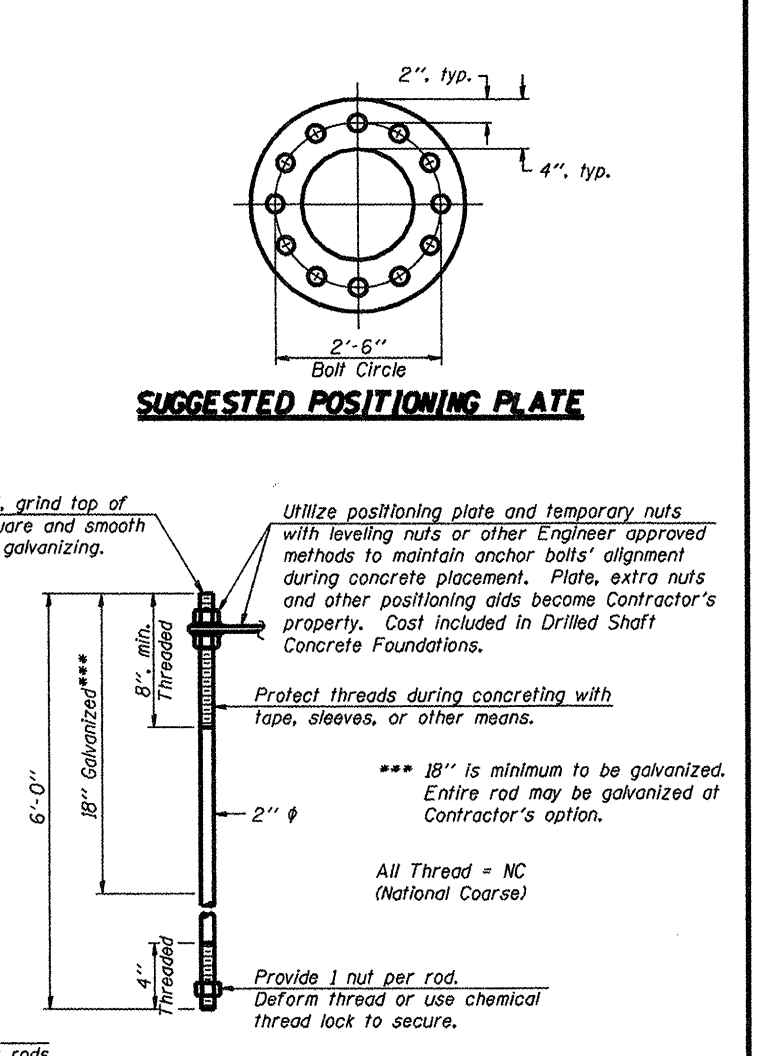


Structure Number	Station	H
167 2C10IS251L009.6	104+85	21' 3"
168 2C10IS251R009.6	104+85	19' 3/4"

Note: "H" based on 15'-0" or actual sign height, whichever is greater.



OSC-A-5

1-20-11

FILE NAME =	USER NAME = linkdj
ONBR/SIGN TRUSS/CADD Plans/2011-2 cont	act\PLANeng.dgn
PLOT SCALE = 100.0000 / IN.	CHECKED -
PLOT DATE = Wed Apr 06 15:32:01 2011	DATE -

DESIGNED -	REVISED -
DRAWN -	REVISED -
CHECKED -	REVISED -
DATE -	REVISED -

STATE OF ILLINOIS  
DEPARTMENT OF TRANSPORTATION

CANTILEVER SIGN STRUCTURES - TYPE II-C-A & III-C-A  
TRUSS SUPPORT POST - ALUMINUM TRUSS & STEEL POST

F.A. RTE.	SECTION	COUNTY	TOTAL SHEETS	SHEET NO.
var 0-2	QVD SIM STR REPL 12-03	VARIOUS	31	19
CONTRACT NO. 46176			ILLINOIS FED. AID PROJECT	