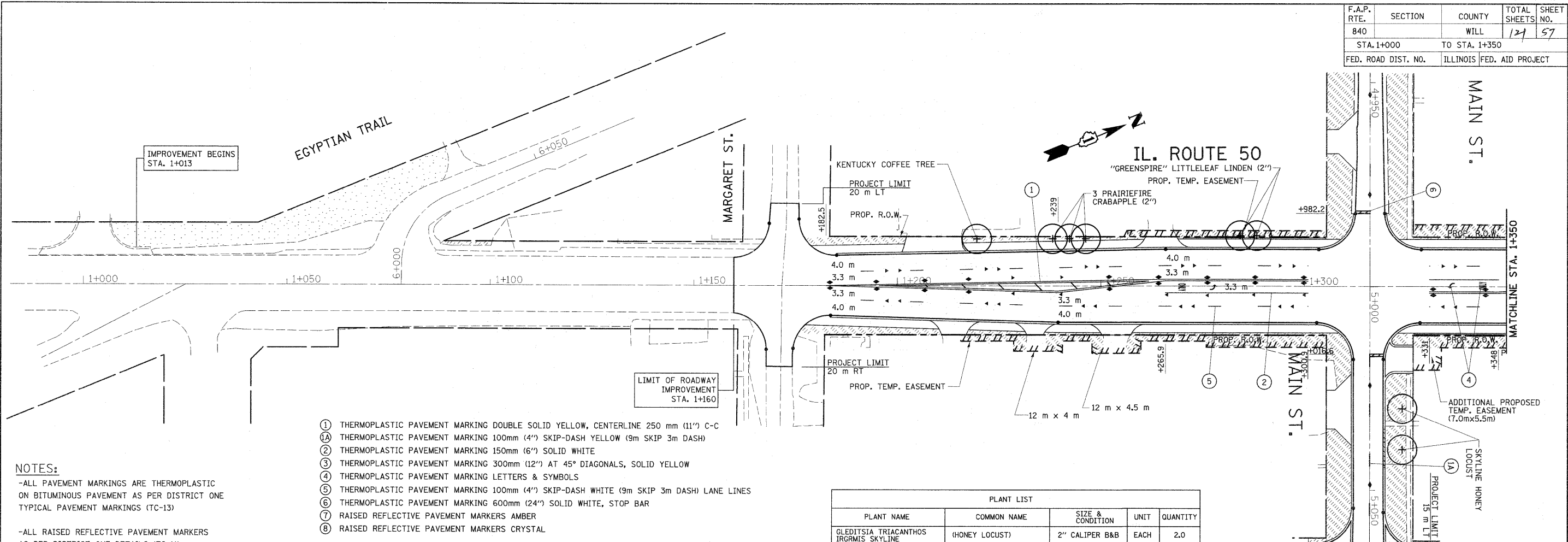


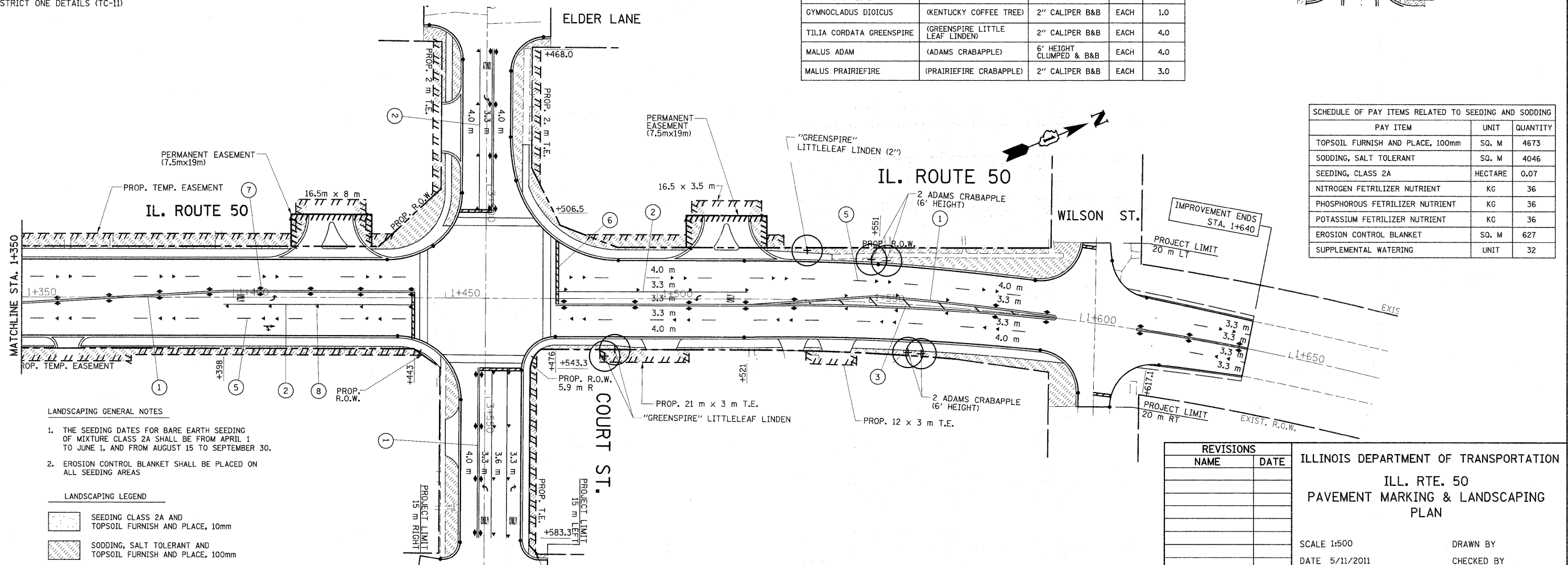
F.A.P. RTE.	SECTION	COUNTY	TOTAL SHEETS	SHEET NO.
840		WILL	121	57
STA. 1+000		TO STA. 1+350		
FED. ROAD DIST. NO.		ILLINOIS FED. AID PROJECT		



- ① THERMOPLASTIC PAVEMENT MARKING DOUBLE SOLID YELLOW, CENTERLINE 250 mm (11") C-C
- ② THERMOPLASTIC PAVEMENT MARKING 100mm (4") SKIP-DASH YELLOW (9m SKIP 3m DASH)
- ③ THERMOPLASTIC PAVEMENT MARKING 150mm (6") SOLID WHITE
- ④ THERMOPLASTIC PAVEMENT MARKING 300mm (12") AT 45° DIAGONALS, SOLID YELLOW
- ⑤ THERMOPLASTIC PAVEMENT MARKING LETTERS & SYMBOLS
- ⑥ THERMOPLASTIC PAVEMENT MARKING 100mm (4") SKIP-DASH WHITE (9m SKIP 3m DASH) LANE LINES
- ⑦ THERMOPLASTIC PAVEMENT MARKING 600mm (24") SOLID WHITE, STOP BAR
- ⑧ RAISED REFLECTIVE PAVEMENT MARKERS AMBER
- ⑨ RAISED REFLECTIVE PAVEMENT MARKERS CRYSTAL

NOTES:
 -ALL PAVEMENT MARKINGS ARE THERMOPLASTIC ON BITUMINOUS PAVEMENT AS PER DISTRICT ONE TYPICAL PAVEMENT MARKINGS (TC-13)
 -ALL RAISED REFLECTIVE PAVEMENT MARKERS AS PER DISTRICT ONE DETAILS (TC-11)

PLANT LIST				
PLANT NAME	COMMON NAME	SIZE & CONDITION	UNIT	QUANTITY
GLEDITSIA TRIACANTHOS IRGRMIS SKYLINE	(HONEY LOCUST)	2" CALIPER B&B	EACH	2.0
GYMNOCLADUS DIOICUS	(KENTUCKY COFFEE TREE)	2" CALIPER B&B	EACH	1.0
TILIA CORDATA GREENSPIRE	(GREENSPIRE LITTLE LEAF LINDEN)	2" CALIPER B&B	EACH	4.0
MALUS ADAM	(ADAMS CRABAPPLE)	6' HEIGHT CLUMPED & B&B	EACH	4.0
MALUS PRAIRIEFIRE	(PRAIRIEFIRE CRABAPPLE)	2" CALIPER B&B	EACH	3.0



- LANDSCAPING GENERAL NOTES**
1. THE SEEDING DATES FOR BARE EARTH SEEDING OF MIXTURE CLASS 2A SHALL BE FROM APRIL 1 TO JUNE 1, AND FROM AUGUST 15 TO SEPTEMBER 30.
 2. EROSION CONTROL BLANKET SHALL BE PLACED ON ALL SEEDING AREAS
- LANDSCAPING LEGEND**
- SEEDING CLASS 2A AND TOPSOIL FURNISH AND PLACE, 10mm
 - SODDING, SALT TOLERANT AND TOPSOIL FURNISH AND PLACE, 100mm

SCHEDULE OF PAY ITEMS RELATED TO SEEDING AND SODDING		
PAY ITEM	UNIT	QUANTITY
TOPSOIL FURNISH AND PLACE, 100mm	SQ. M	4673
SODDING, SALT TOLERANT	SQ. M	4046
SEEDING, CLASS 2A	HECTARE	0.07
NITROGEN FERTILIZER NUTRIENT	KG	36
PHOSPHOROUS FERTILIZER NUTRIENT	KG	36
POTASSIUM FERTILIZER NUTRIENT	KG	36
EROSION CONTROL BLANKET	SQ. M	627
SUPPLEMENTAL WATERING	UNIT	32

REVISIONS	
NAME	DATE

ILLINOIS DEPARTMENT OF TRANSPORTATION
 ILL. RTE. 50
 PAVEMENT MARKING & LANDSCAPING PLAN

SCALE 1:500
 DATE 5/11/2011

DRAWN BY
 CHECKED BY