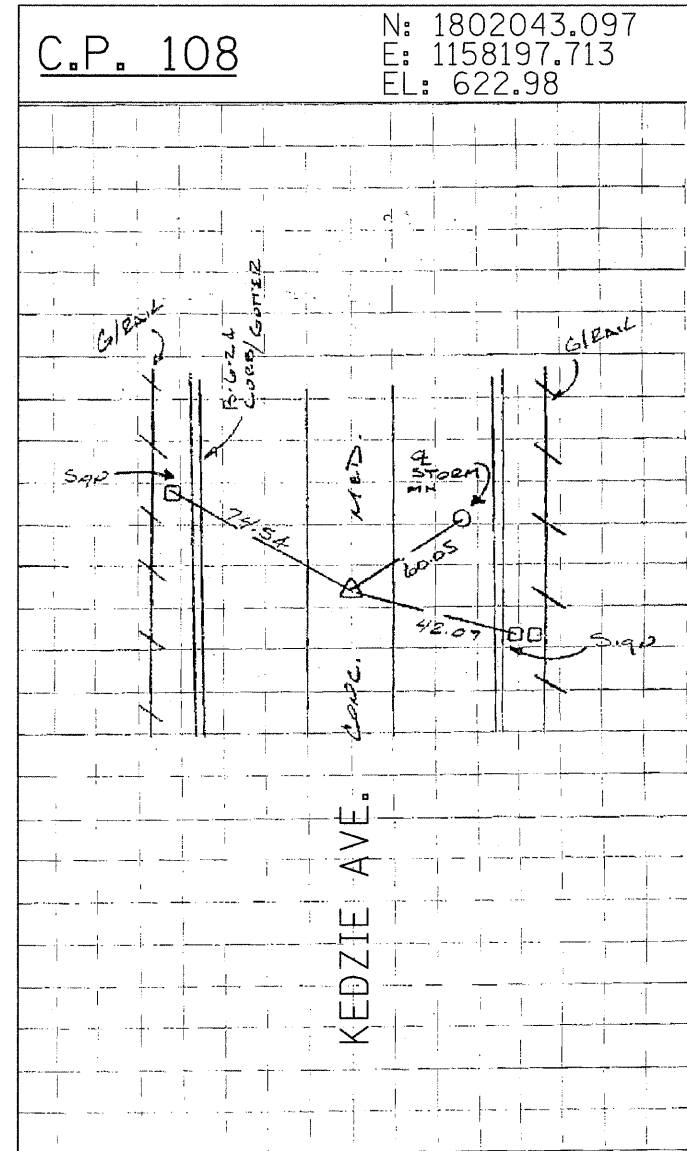
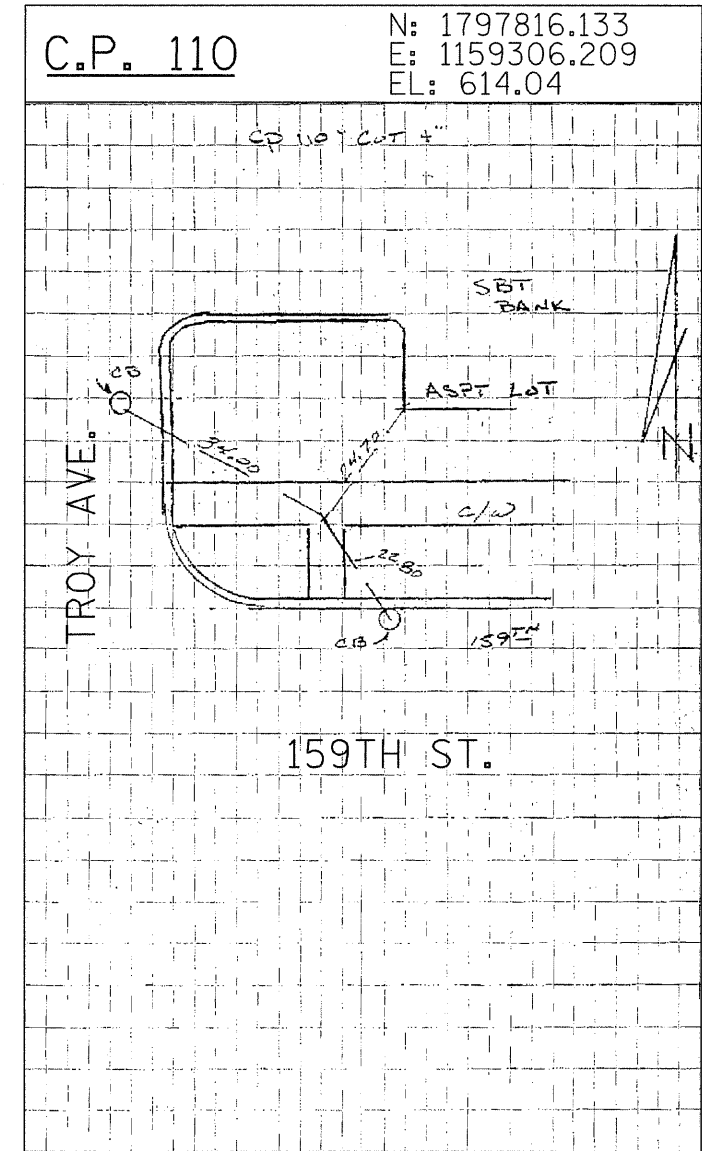


SET MAG NAIL IN NORTHERLY SHOULDER OF WESTBOUND 159TH ST. AND SOUTHBOUND I-57 TRIMUS ± 200' WESTERLY OF I-57



SET CROSS CUT IN CONCRETE MEDIAN WITH RUMBLE STRIPS ± 350' NORTH OF KEDZIE / I-57 BRIDGE



CROSS CUT IN SIDEWALK AT NORTH EAST CORNER OF TROY AVENUE AND 159TH STREET.

TYLIN INTERNATIONAL	USER NAME = #USER#	DESIGNED - EMK	REVISED -	STATE OF ILLINOIS DEPARTMENT OF TRANSPORTATION	KEDZIE AVENUE PROJECT SURVEY TIES FOR CONTROL POINTS			F.A. RTE.	SECTION	COUNTY	TOTAL SHEETS	SHEET NO.
	PLLOT SCALE = #SCALE#	DRAWN - EMK	REVISED -					57	1313.1B-1	COOK	162	17
	PLLOT DATE = 4/29/2011	CHECKED - SES	REVISED -					CONTRACT NO. 60K14				
	DATE - 5/5/2011	REVISED -	FED. ROAD DIST. NO. ILLINOIS FED. AID PROJECT									
SCALE: N.T.S.				SHEET NO. 8 OF 10 SHEETS	STA.	TO STA.						