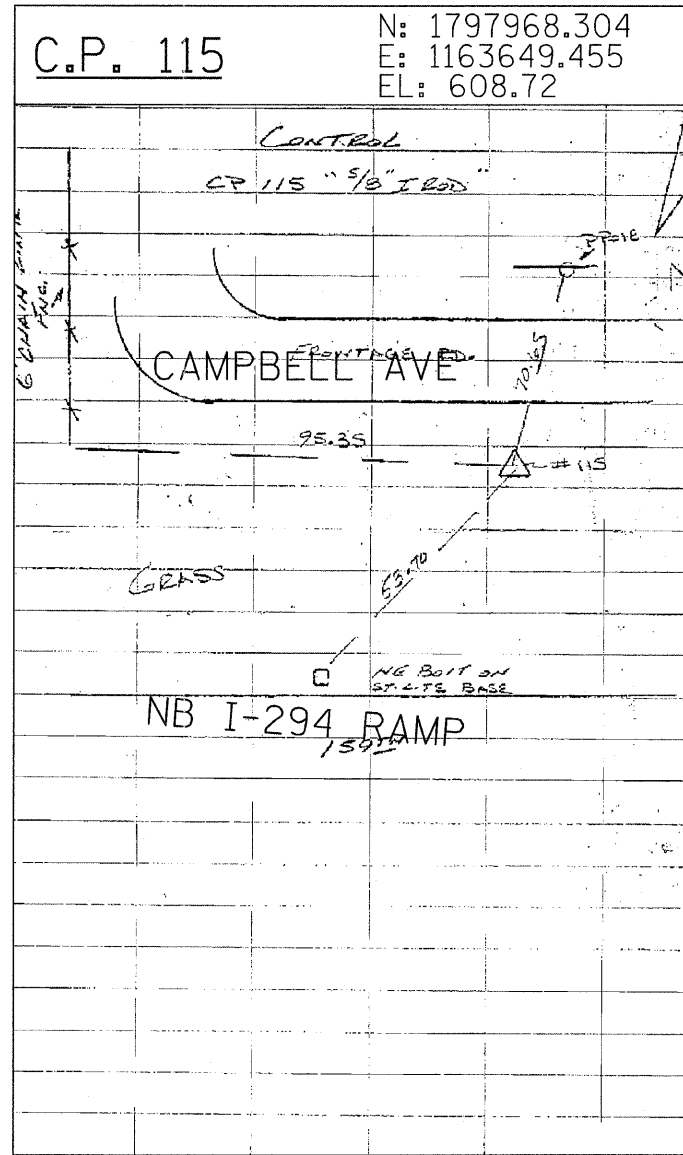


SET 5/8" IRON ROD 4.50' EAST OF EASTERLY EDGE OF PAVEMENT ± 160' NORTH OF C 155TH ST.



5/8" IRON ROD ON SOUTH SIDE OF CAMPBELL AVENUE NORTH OF THE INTERSECTION OF 159TH STREET AND THE NORTHBOUND I-294 RAMP.

<b>TYLIN INTERNATIONAL</b>	USER NAME = #USER#	DESIGNED - EMK	REVISED -	<b>STATE OF ILLINOIS DEPARTMENT OF TRANSPORTATION</b>	<b>KEDZIE AVENUE PROJECT</b>		F.A. RTE.	SECTION	COUNTY	TOTAL SHEETS	SHEET NO.
	PLLOT SCALE = #SCALE#	DRAWN - EMK	REVISED -		<b>SURVEY TIES FOR CONTROL POINTS</b>		57	1313.1B-1	COOK	162	19
	PLLOT DATE = 4/29/2011	CHECKED - SES	REVISED -		SCALE: N.T.S.	SHEET NO. 10 OF 10 SHEETS	STA.	TO STA.	CONTRACT NO. 60K14		
	DATE - 5/5/2011	REVISED -					FED. ROAD DIST. NO. ILLINOIS FED. AID PROJECT				