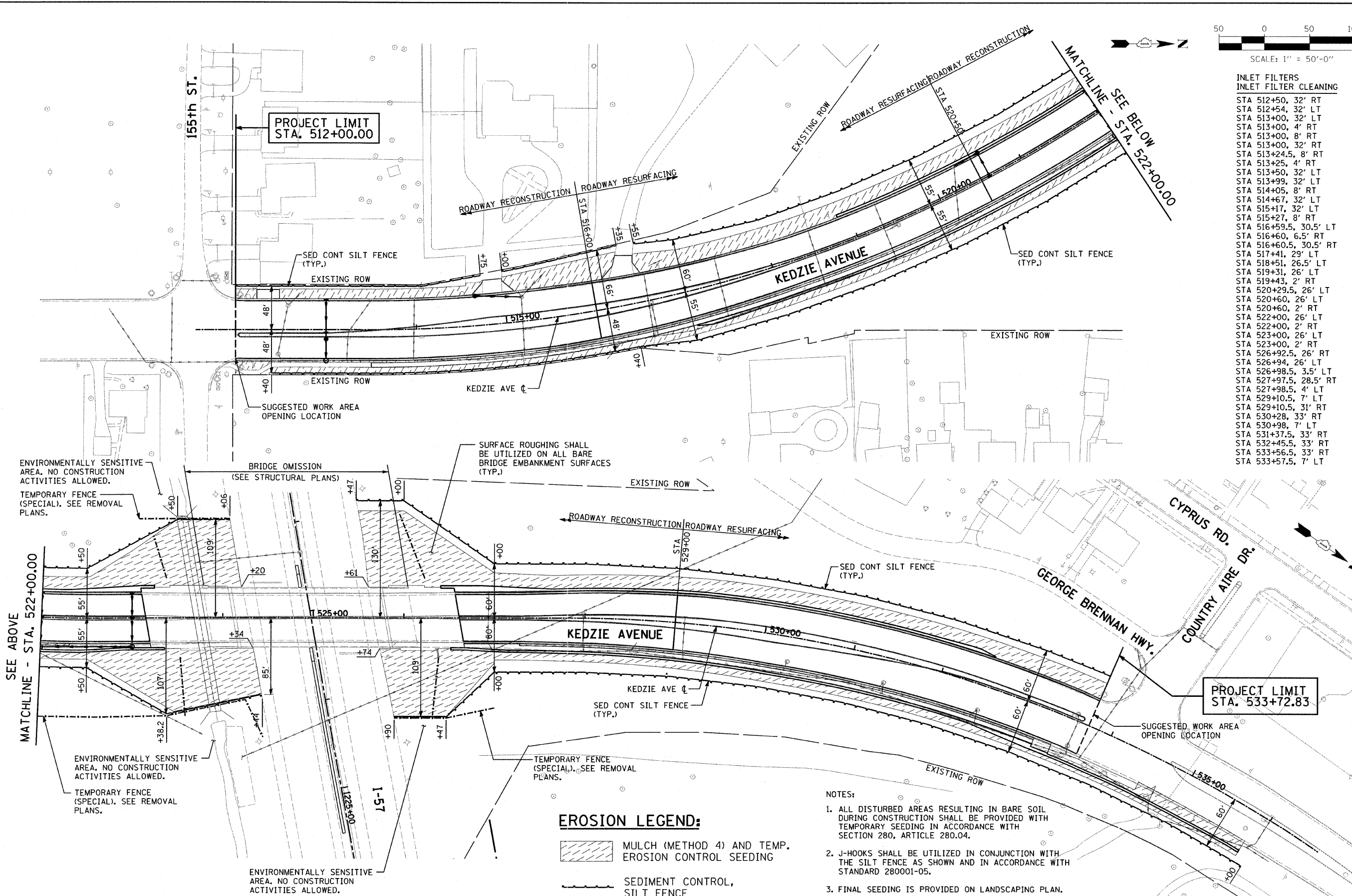


**INLET FILTERS  
INLET FILTER CLEANING**

- STA 512+50, 32' RT
- STA 512+54, 32' LT
- STA 513+00, 32' LT
- STA 513+00, 4' RT
- STA 513+00, 8' RT
- STA 513+00, 32' RT
- STA 513+24.5, 8' RT
- STA 513+25, 4' RT
- STA 513+50, 32' LT
- STA 513+99, 32' LT
- STA 514+05, 8' RT
- STA 514+67, 32' LT
- STA 515+17, 32' LT
- STA 515+27, 8' RT
- STA 516+59.5, 30.5' LT
- STA 516+60, 6.5' RT
- STA 516+60.5, 30.5' RT
- STA 517+41, 29' LT
- STA 518+51, 26.5' LT
- STA 519+31, 26' LT
- STA 519+43, 2' RT
- STA 520+29.5, 26' LT
- STA 520+60, 2' RT
- STA 520+60, 2' RT
- STA 522+00, 26' LT
- STA 522+00, 2' RT
- STA 523+00, 26' LT
- STA 523+00, 2' RT
- STA 526+92.5, 26' RT
- STA 526+94, 26' LT
- STA 526+98.5, 3.5' LT
- STA 527+97.5, 28.5' LT
- STA 527+98.5, 4' LT
- STA 529+10.5, 7' LT
- STA 529+10.5, 31' RT
- STA 530+28, 33' RT
- STA 530+98, 7' LT
- STA 531+37.5, 33' RT
- STA 532+45.5, 33' RT
- STA 533+56.5, 33' RT
- STA 533+57.5, 7' LT



**EROSION LEGEND:**

- MULCH (METHOD 4) AND TEMP. EROSION CONTROL SEEDING
- SEDIMENT CONTROL, SILT FENCE

**NOTES:**

1. ALL DISTURBED AREAS RESULTING IN BARE SOIL DURING CONSTRUCTION SHALL BE PROVIDED WITH TEMPORARY SEEDING IN ACCORDANCE WITH SECTION 280, ARTICLE 280.04.
2. J-HOOKS SHALL BE UTILIZED IN CONJUNCTION WITH THE SILT FENCE AS SHOWN AND IN ACCORDANCE WITH STANDARD 280001-05.
3. FINAL SEEDING IS PROVIDED ON LANDSCAPING PLAN.

ENVIRONMENTALLY SENSITIVE AREA. NO CONSTRUCTION ACTIVITIES ALLOWED.  
TEMPORARY FENCE (SPECIAL). SEE REMOVAL PLANS.

ENVIRONMENTALLY SENSITIVE AREA. NO CONSTRUCTION ACTIVITIES ALLOWED.  
TEMPORARY FENCE (SPECIAL). SEE REMOVAL PLANS.

ENVIRONMENTALLY SENSITIVE AREA. NO CONSTRUCTION ACTIVITIES ALLOWED.

**PROJECT LIMIT  
STA. 533+72.83**

**PROJECT LIMIT  
STA. 512+00.00**

	USER NAME = #USER# PLOT SCALE = #SCALE# PLOT DATE = #DATE#	DESIGNED - JRS DRAWN - JMR CHECKED - APS DATE - 05/01/2011	REVISED - REVISED - REVISED - REVISED -	<b>STATE OF ILLINOIS DEPARTMENT OF TRANSPORTATION</b>	<b>KEDZIE AVENUE PROJECT EROSION CONTROL PLAN</b>	F.A. RTE. 57 SECTION 1313.1B-1 COUNTY COOK TOTAL SHEETS 162 SHEET NO. 44 CONTRACT NO. 60K14	SCALE: 1"=50' SHEET NO. 1 OF 1 SHEETS STA. 512+00 TO STA. 533+72.83 FED. ROAD DIST. NO. ILLINOIS FED. AID PROJECT
	HRGreen.com Illinois Professional Design Firm #184-001322						