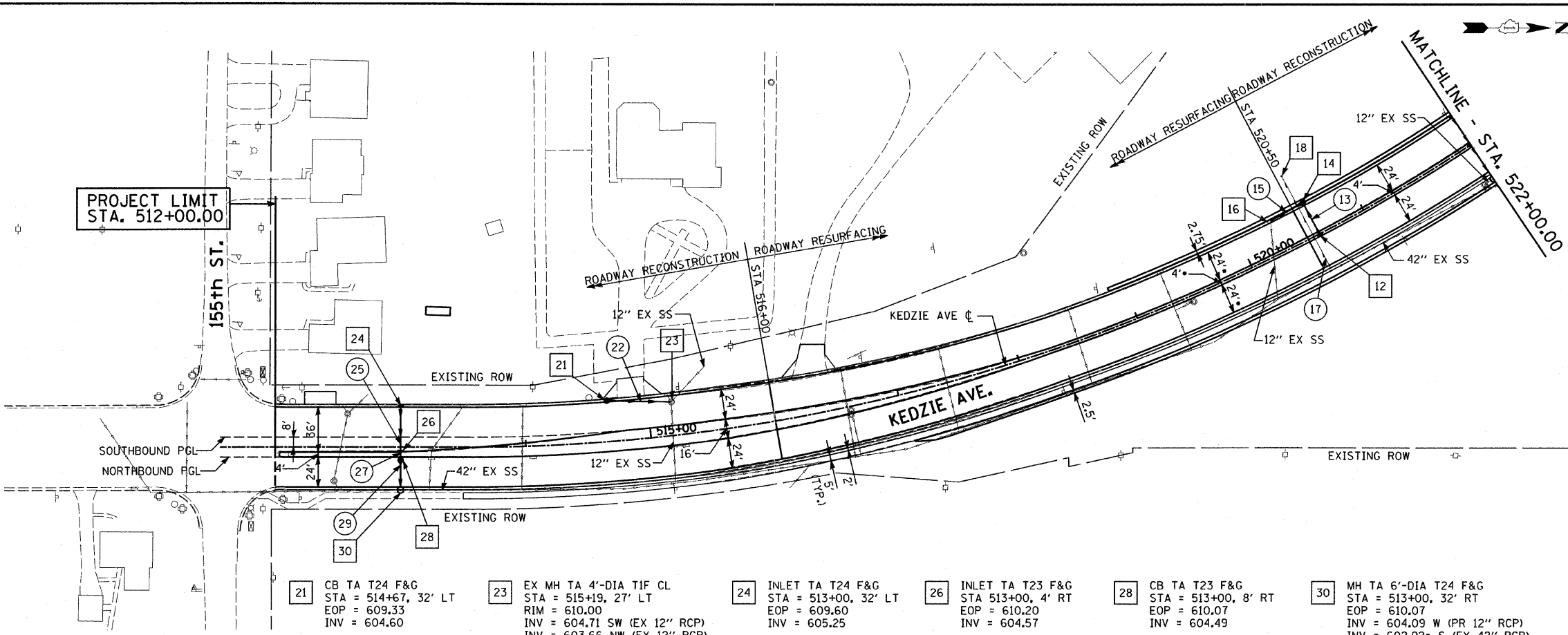


DATE	
BY	
REVISIONS	
NO.	
DESCRIPTION	
DATE	
BY	
DESCRIPTION	

DATE	
BY	
REVISIONS	
NO.	
DESCRIPTION	
DATE	
BY	
DESCRIPTION	

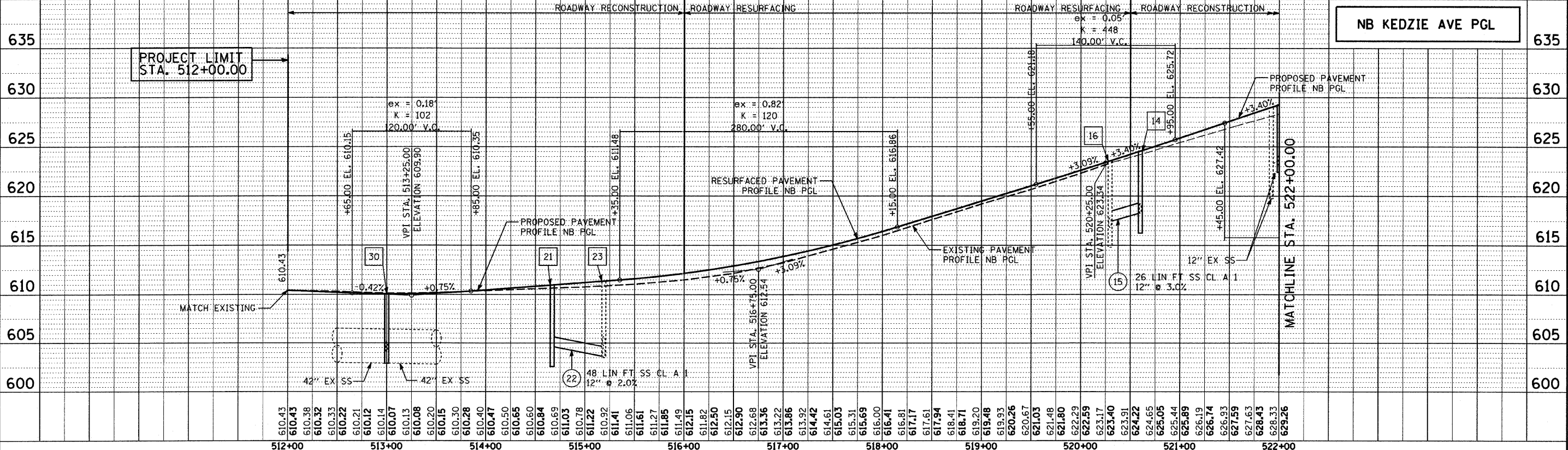
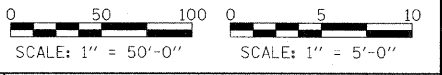


- 12 INLET TA T23 F&G  
STA = 520+60, 2' RT  
EOP = 624.55  
INV = 618.50
- 13 26 LIN FT SS CL A 1  
12" @ 1.0%
- 14 CB TA T24 F&G  
STA = 520+60, 26' LT  
EOP = 623.22  
INV = 618.24
- 15 26 LIN FT SS CL A 1  
12" @ 3.0%
- 16 EX CB TA T24 F&G  
STA = 520+29.5, 26' LT  
EOP = 622.23  
INV = 617.46 N  
INV = 616.81 E (EX 12" RCP)
- 17 85 LIN FT PIPE UNDERDRAINS 4"
- 18 CONC HDWL FOR P DRAIN  
STA = 520+55, 56' LT

**NOTES:**

- STATION AND OFFSET CALLOUTS REFER TO EDGE OF PAVEMENT, UNLESS OTHERWISE NOTED.
- MANHOLE NO. 30 SHALL BE CONSTRUCTED ON-LINE OVER THE EXISTING 42" RCP LINE. EXISTING INVERTS PROVIDED ARE ESTIMATED AND SHALL BE FIELD VERIFIED BY THE CONTRACTOR PRIOR TO ORDERING THE STRUCTURE. NO ADDITIONAL COMPENSATION SHALL BE ALLOWED FOR THE CONNECTION OF THE EXISTING 42" RCP LINE, BUT SHALL BE REFLECTED IN THE UNIT BID PRICE FOR THE PROPOSED STRUCTURE.

- 21 CB TA T24 F&G  
STA = 514+67, 32' LT  
EOP = 609.33  
INV = 604.60
- 22 48 LIN FT SS CL A 1  
12" @ 2.0%
- 23 EX MH TA 4'-DIA TIF CL  
STA = 515+19, 27' LT  
RIM = 610.00  
INV = 604.71 SW (EX 12" RCP)  
INV = 603.66 NW (EX 12" RCP)  
INV = 603.64 S (PR 12" RCP)  
INV = 603.51 E (EX 12" RCP)
- 24 INLET TA T24 F&G  
STA = 513+00, 32' LT  
EOP = 609.60  
INV = 605.25
- 25 34 LIN FT SS CL A 1  
12" @ 2.0%
- 26 INLET TA T23 F&G  
STA 513+00, 4' RT  
EOP = 610.20  
INV = 604.57
- 27 4 LIN FT SS CL A 1  
12" @ 2.0%
- 28 CB TA T23 F&G  
STA = 513+00, 8' RT  
EOP = 610.07  
INV = 604.49
- 29 20 LIN FT SS CL A 1  
12" @ 2.0%
- 30 MH TA 6'-DIA T24 F&G  
STA = 513+00, 32' RT  
EOP = 610.07  
INV = 604.09 W (PR 12" RCP)  
INV = 602.92 S (EX 42" RCP)  
INV = 602.92 N (EX 42" RCP)  
SEE NOTE 2 THIS SHEET



	USER NAME = #USER# PLOT SCALE = #SCALE# PLOT DATE = #DATE#	DESIGNED - JRS DRAWN - BAH CHECKED - APS DATE - 05/01/2011	REVISED - REVISED - REVISED - REVISED -	<b>STATE OF ILLINOIS DEPARTMENT OF TRANSPORTATION</b>		<b>KEDZIE AVENUE PROJECT PROPOSED DRAINAGE PLAN AND PROFILES</b>		F.A. RTE. 57 SECTION 1313.B-1 COUNTY COOK TOTAL SHEETS 162 SHEET NO. 46 CONTRACT NO. 60K14
	SCALE: SHEET NO. 1 OF 2 SHEETS STA. 512+00 TO STA. 522+00				FED. ROAD DIST. NO. ILLINOIS FED. AID PROJECT			

SF FILE\$

SF FILE\$