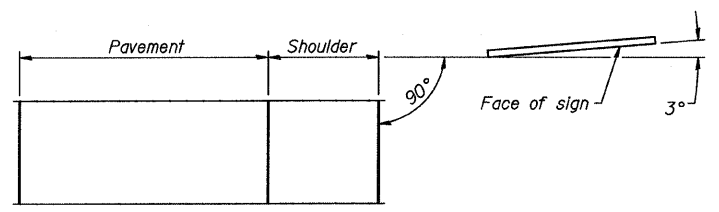
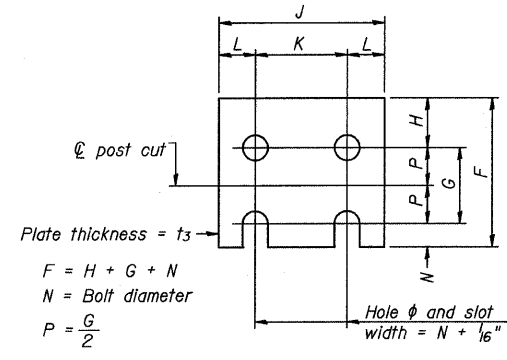


**ELEVATION**

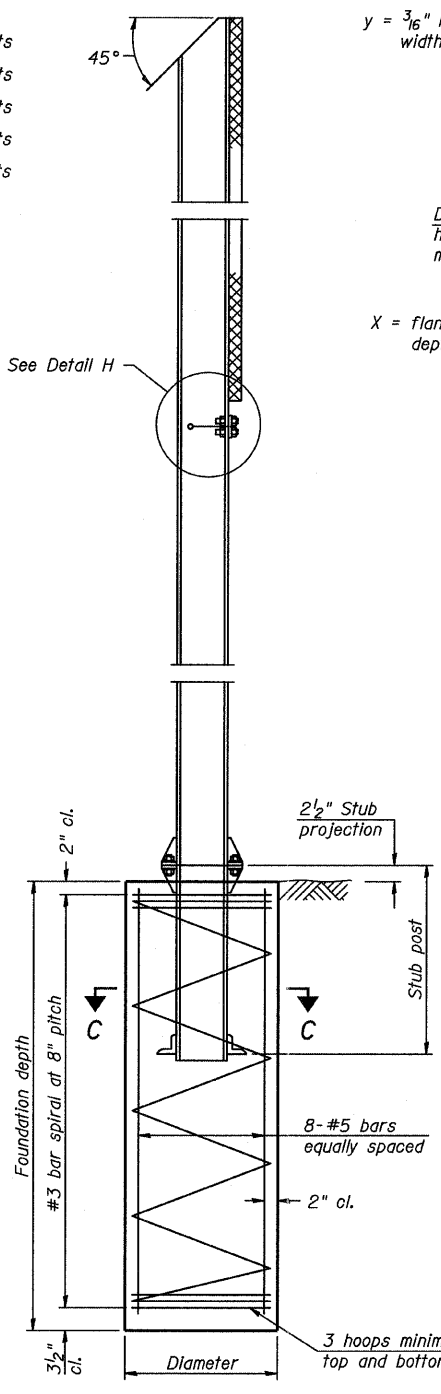


**LOCATION SKETCH**

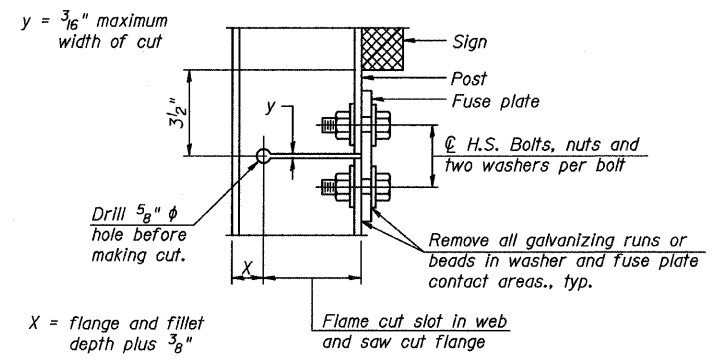


**FUSE PLATE DETAIL**  
(Install with notches down.)

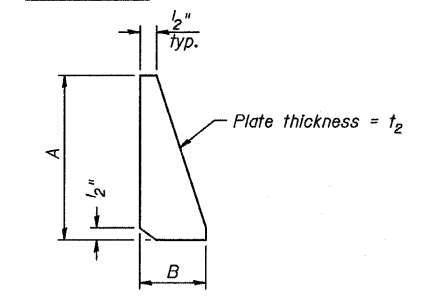
N = Bolt Diameter	G	H
1/2"	2"	1 1/8"
5/8"	2 1/4"	1 1/4"
3/4"	2 1/2"	1 3/8"
7/8"	2 3/4"	1 1/2"
1"	3"	1 5/8"
1 1/8"	3 1/4"	1 3/4"
1 1/4"	3 1/2"	1 7/8"



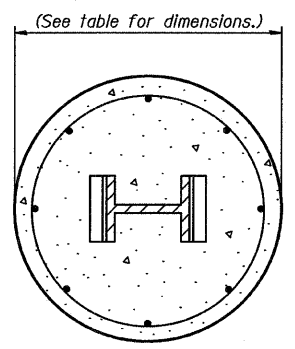
**SECTION D-D**



**DETAIL H**



**STIFFENER PLATE DETAIL**



**SECTION C-C**

**GENERAL NOTES**

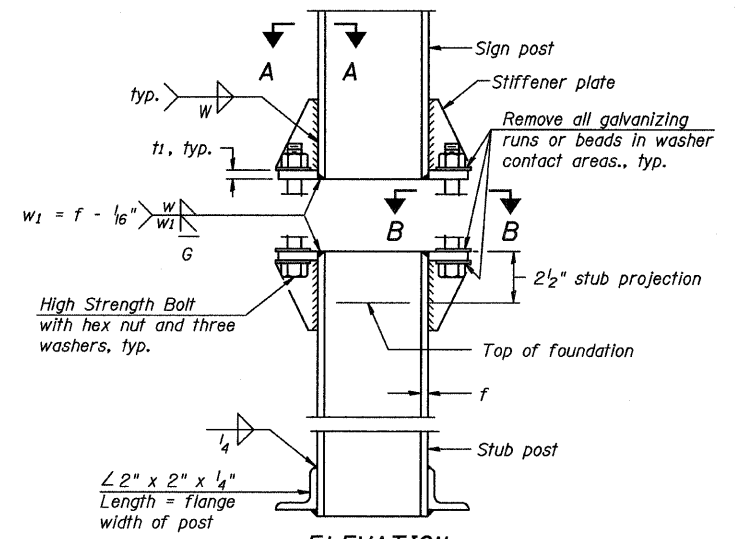
Posts shall be plumbed by using shims with post-to-stub post connection bolts snug tight only. Final tightening of all High Strength Bolts shall be in accordance with Article T27.05 and threads at the junction of the bolt and nut shall be burred or center punched to prevent the nut from loosening.

LOADING: 80 m.p.h. wind with 30% gust factor, normal to sign.

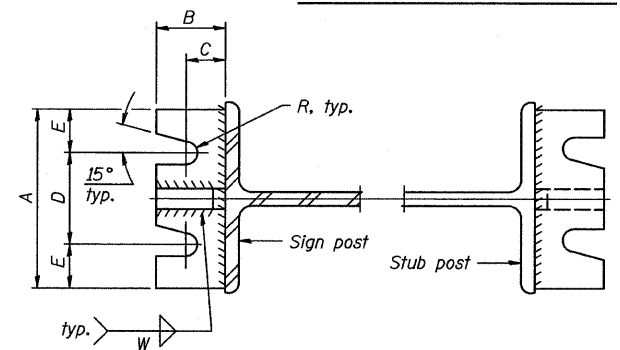
DESIGN STRESSES:  
Structural steel - 20,000 p.s.i.  
Reinforcing steel - 20,000 p.s.i.  
Concrete - 1,400 p.s.i.  
Footing soil pressure - 2,000 p.s.f.

After fabrication, the post, fuse plate and upper 6", min. of the stub post shall be hot-dip galvanized in accordance with AASHTO M11. All bolts, nuts and washers shall be hot-dip galvanized in accordance with AASHTO M232.

Work this sheet with Base Sheet BAW-A-2.

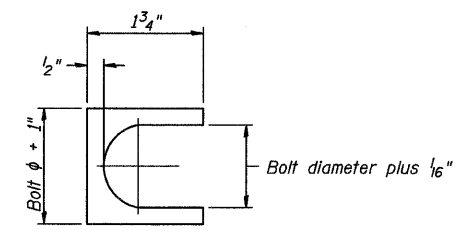


**ELEVATION SIGN POST & STUB POST**



**SECTION A-A**

**SECTION B-B**



**SHIM DETAIL**

Furnish two 0.01" thick and two 0.03" thick stainless steel or brass (ASTM B36) shims per post.

**BREAK-AWAY WIDE FLANGE STEEL SIGN POST DETAILS**

<b>TYLIN INTERNATIONAL</b>	USER NAME = #USER#	DESIGNED - EMK	REVISED -
	PLOT SCALE = #SCALE#	DRAWN - EMK	REVISED -
	PLOT DATE = 4/29/2011	CHECKED - SES	REVISED -
		DATE - 5/5/2011	REVISED -

NUMBER	REVISION	DATE

**STATE OF ILLINOIS DEPARTMENT OF TRANSPORTATION**

<b>KEDZIE AVENUE PROJECT</b>			
<b>BREAKAWAY WIDE FLANGE STEEL SIGNPOST DETAIL 1 OF 2</b>			
SCALE: NTS	SHEET NO. 1 OF 2 SHEETS	STA. TO STA.	

F.A. RTE. 57	SECTION 1313.1B-1	COUNTY COOK	TOTAL SHEETS 162	SHEET NO. 60
FED. ROAD DIST. NO. ILLINOIS FED. AID PROJECT			CONTRACT NO. 60K14	