

Benchmark: BM 204 Square cut on west side of concrete base for light pole. Located along right shoulder of NB I-57, first light pole south of Kedzie Ave. bridge, Sta. 523+92, LT 137'. Elev. 609.85

Existing Structure: S.N. 016-2126 originally built in 1968 as Kedzie Avenue, Section 068-1313.1-C.F. The existing structure consists of a reinforced concrete deck supported by a two span continuous wide flange steel superstructure with vaulted concrete abutments. The overall structure length is 225'-3 1/2" back to back approach bent and 67'-0" out to out deck. Stage Construction will be utilized to maintain one lane of traffic in each direction at all times.

LOADING HL-93

Allow 50#/sq. ft. for future wearing surface.

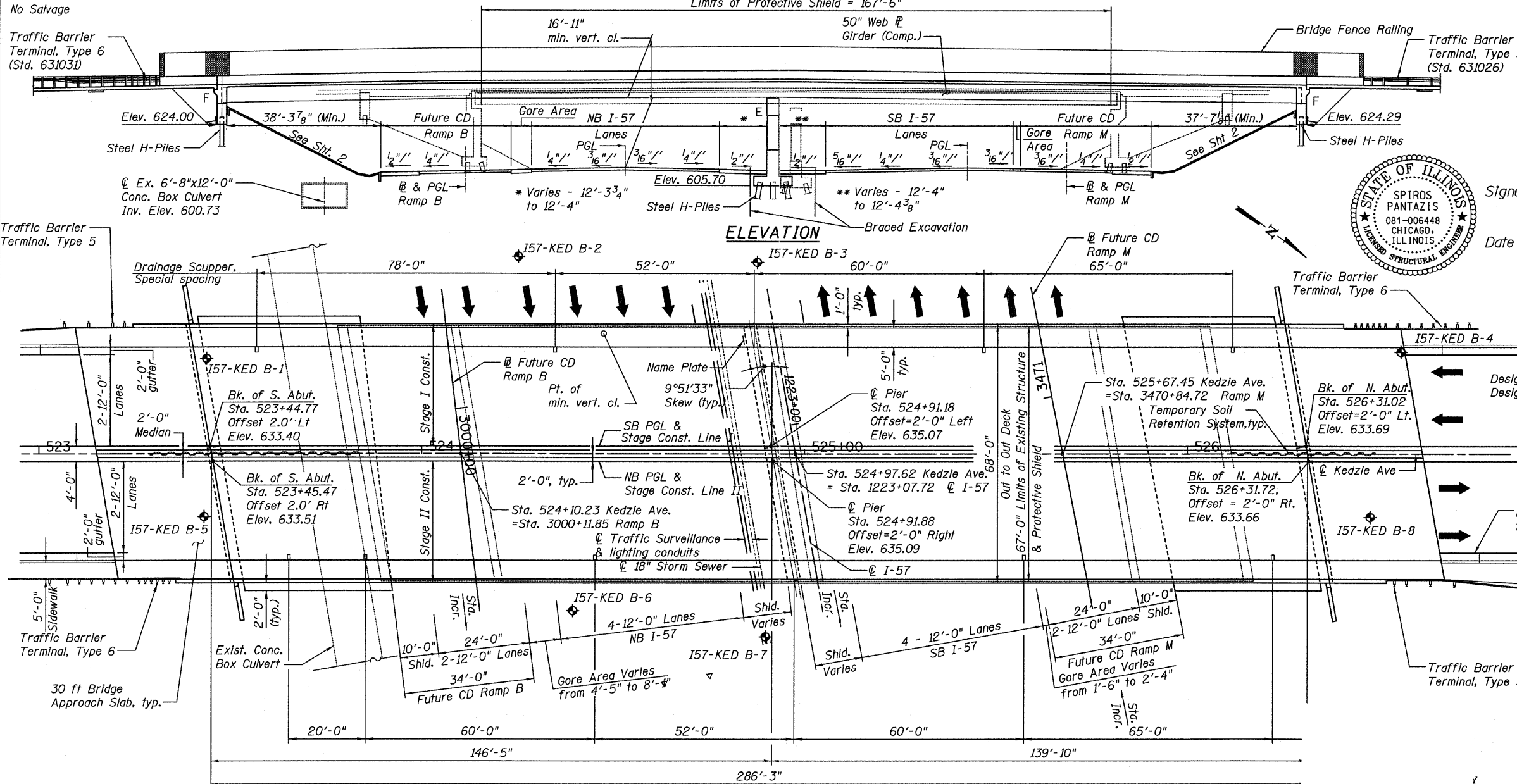
DESIGN SPECIFICATIONS

2007 AASHTO LRFD Bridge Design Specifications, 4th Edition, with 2008 & 2009 Interims

DESIGN STRESSES

FIELD UNITS

f'c = 3,500 psi
fy = 60,000 psi (Reinforcement)
fy = 50,000 psi (M270 Grade 50)



Signed *[Signature]*
Spiros Pantazis, S.E. II. Lic. No. 081-006448
Expires 11-30-2012.
Date 5/4/11

SEISMIC DATA

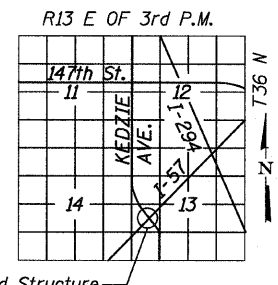
Seismic Performance Zone (SPZ) = 1
Design Spectral Acceleration at 1.0 sec. (S_{u1}) = 0.065
Design Spectral Acceleration at 0.2 sec. (S_{u0.2}) = 0.117
Soil Site Class = C

LEGEND:

SOIL BORING LOCATION

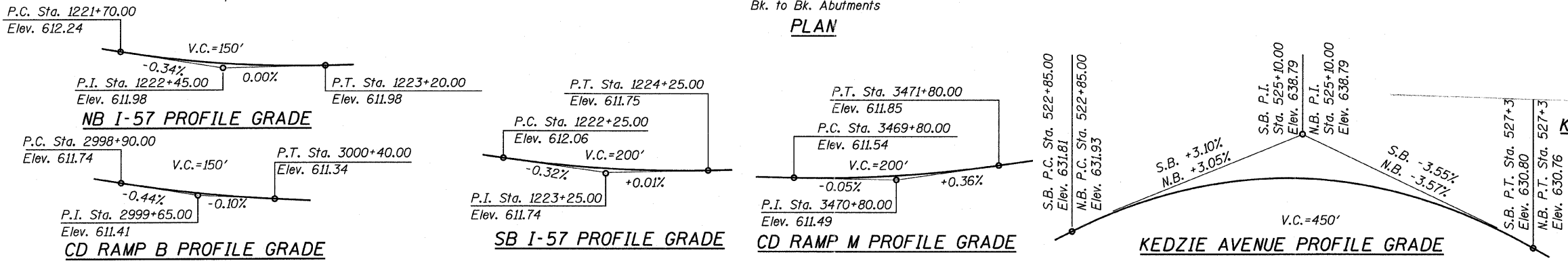
NOTE:

For Horizontal Curve and Superlevation details see sheet 2 of 40.



LOCATION SKETCH

**GENERAL PLAN AND ELEVATION
KEDZIE AVENUE OVER F.A.I. ROUTE 57
SECTION 1313.1B-1
COOK COUNTY
STATION 524+97.62
STRUCTURE NO. 016-1196**



TYLIN INTERNATIONAL

USER NAME =	DESIGNED - LS, SP	REVISED -
PLOT SCALE =	CHECKED - SP, PDF	REVISED -
PLOT DATE = 5/5/2011	DRAWN - DY, LP	REVISED -
	CHECKED - SP, PDF	REVISED -

**STATE OF ILLINOIS
DEPARTMENT OF TRANSPORTATION**

SHEET NO. 1 OF 40 SHEETS

F.A.I. RTE.	SECTION	COUNTY	TOTAL SHEETS	SHEET NO.
57	1313.1B-1	COOK	162	62
CONTRACT NO. 60K14			ILLINOIS FED. AID PROJECT	

P:\602540(57-294)\STRUCTURAL\kedzie over I57\final structure plans-active V1