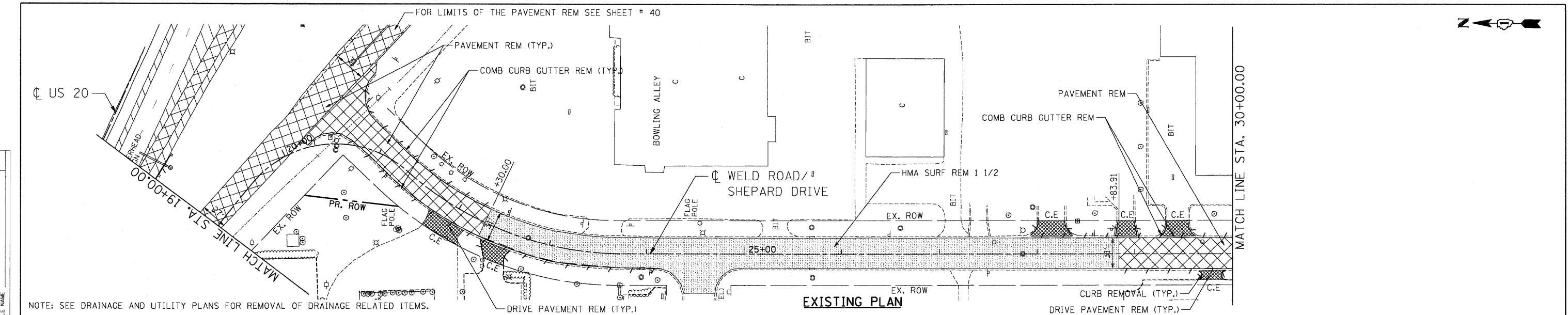
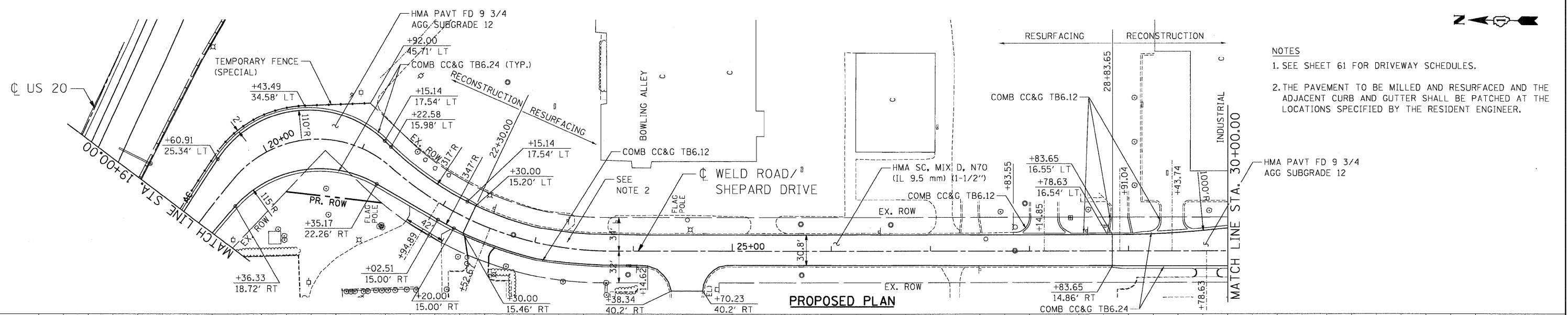


PLAN	DATE
BY	
NO.	
NO.	
NO.	
NO.	

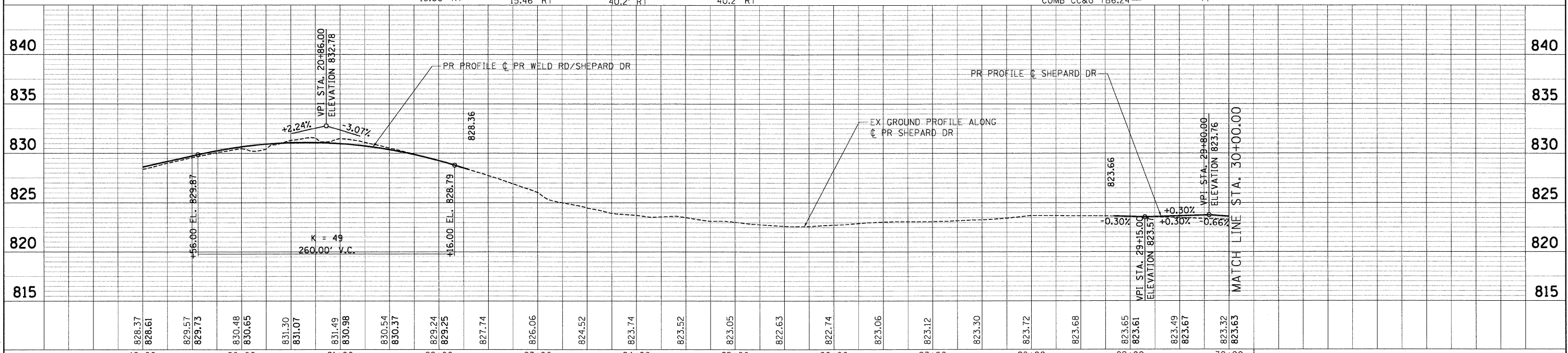
PROFILE	DATE
BY	
NO.	
NO.	
NO.	
NO.	



NOTE: SEE DRAINAGE AND UTILITY PLANS FOR REMOVAL OF DRAINAGE RELATED ITEMS.



- NOTES
- SEE SHEET 61 FOR DRIVEWAY SCHEDULES.
  - THE PAVEMENT TO BE MILLED AND RESURFACED AND THE ADJACENT CURB AND GUTTER SHALL BE PATCHED AT THE LOCATIONS SPECIFIED BY THE RESIDENT ENGINEER.



FILE NAME =	USER NAME = #USER#	DESIGNED - MRK	REVISED -	<b>STATE OF ILLINOIS</b> <b>DEPARTMENT OF TRANSPORTATION</b> FAP ROUTE 345 / US ROUTE 20	<b>ROADWAY PLAN AND PROFILE</b> <b>WELD ROAD / SHEPARD DRIVE</b>		F.A.P. RTE.	SECTION	COUNTY	TOTAL SHEETS	SHEET NO.
#FILE#	PLOT SCALE = #SCALE#	DRAWN - MRK	REVISED -				345	BR-HB-2-BY-1	KANE	434	53
	PLOT DATE = #DATE#	CHECKED - DDH	REVISED -				CONTRACT NO. 60K90				
		DATE - 05/18/11	REVISED -				FED. ROAD DIST. NO. ILLINOIS FED. AID PROJECT				

5-12-2011 16:05:36 H:\WARMAZ \S-2004\WMA VALL ID-TRANS\_07\2202-21379-201\CVL\CAD\60K90\WMA\SHEET\DR\60K90-SHT-PL-PRF-W02.DGN



SCALE: HORIZ. 1"=50' VERT. 1"=5' STA. 19+00.00 TO STA. 30+00.00