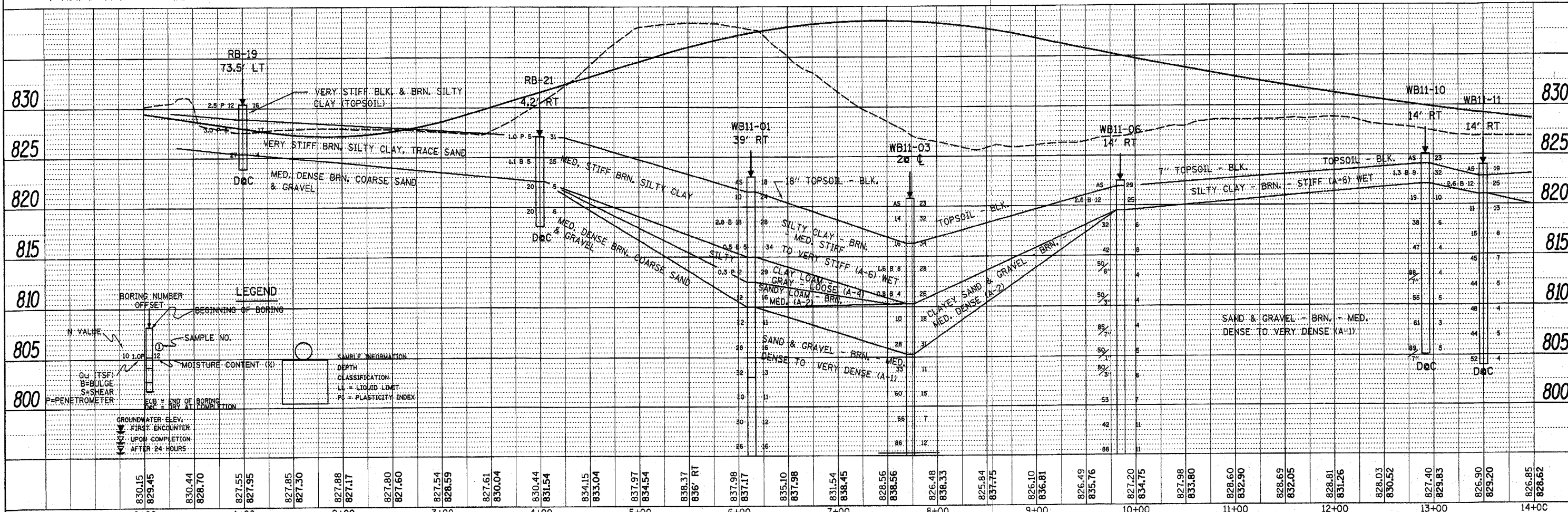
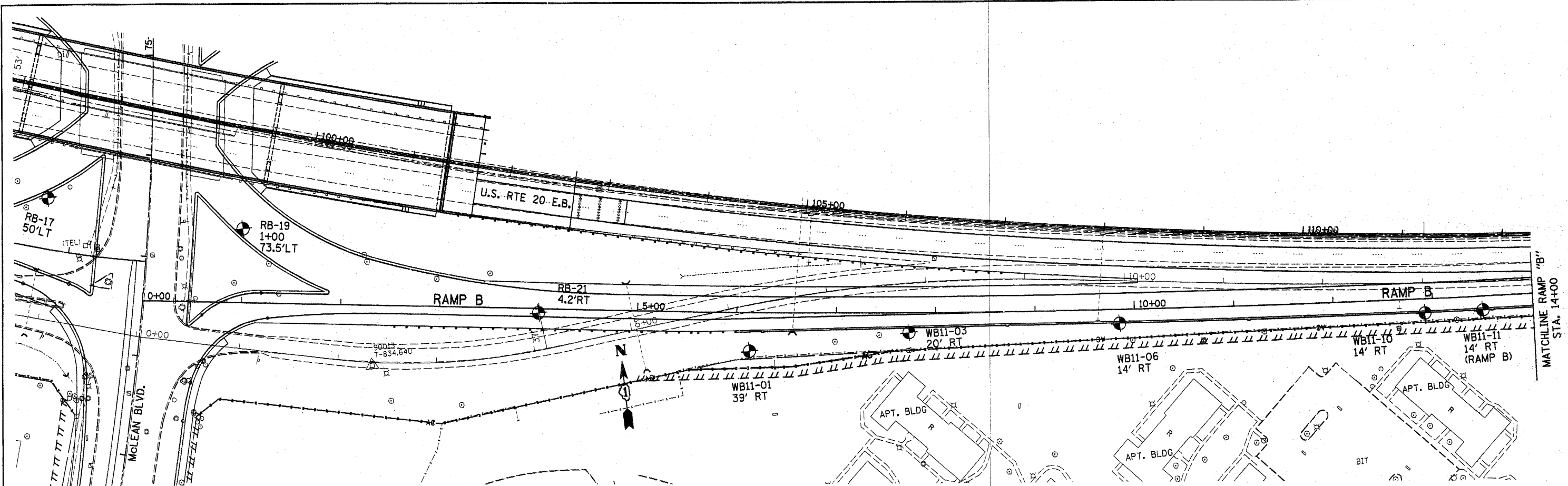


PLAN	SUBMITTED	BY	DATE
	NOTED		
	CHECKED		
	BY		
	DATE		
	NO.		
	FILE NAME		

PROFILE	SUBMITTED	BY	DATE
	NOTED		
	CHECKED		
	BY		
	DATE		
	NO.		
	FILE NAME		



LEGEND

BORING NUMBER
OFF SET

BEGINNING OF BORING

N. VALUE

SAMPLE NO.

MOISTURE CONTENT (%)

SAMPLE DESIGNATION

DEPTH CLASSIFICATION

LL = LIQUID LIMIT

PI = PLASTICITY INDEX

GROUNDWATER ELEV. FIRST ENCOUNTER UPON COMPLETION AFTER 24 HOURS

DEC = END OF BORING

TOP = END OF BORING

BT = END OF BORING

Q = TEST

B = BULGE

S = SHEAR

P = PENETROMETER

FILE NAME =	USER NAME = lizekrf	DESIGNED -	REVISED -	STATE OF ILLINOIS DEPARTMENT OF TRANSPORTATION	SOILS PLAN AND PROFILE RAMP "B" (U.S. RTE. 20)				F.A.P. RTE. 345	SECTION 8R-HB-2-BY-1	COUNTY KANE	TOTAL SHEETS 434	SHEET NO. 66
cr:\pwork\pwork\dot\lizekrf\0161624\ht-Rep\psSoils.dgn	PLOT SCALE = 50.0000' / IN.	DRAWN -	REVISED -		SCALE:	SHEET NO.	OF SHEETS	STA. TO STA.	ILLINOIS FED. AID PROJECT				
PLOT DATE = 10/28/2010	DATE -	CHECKED -	REVISED -		CONTRACT NO. 60K90								
		DATE -	REVISED -										