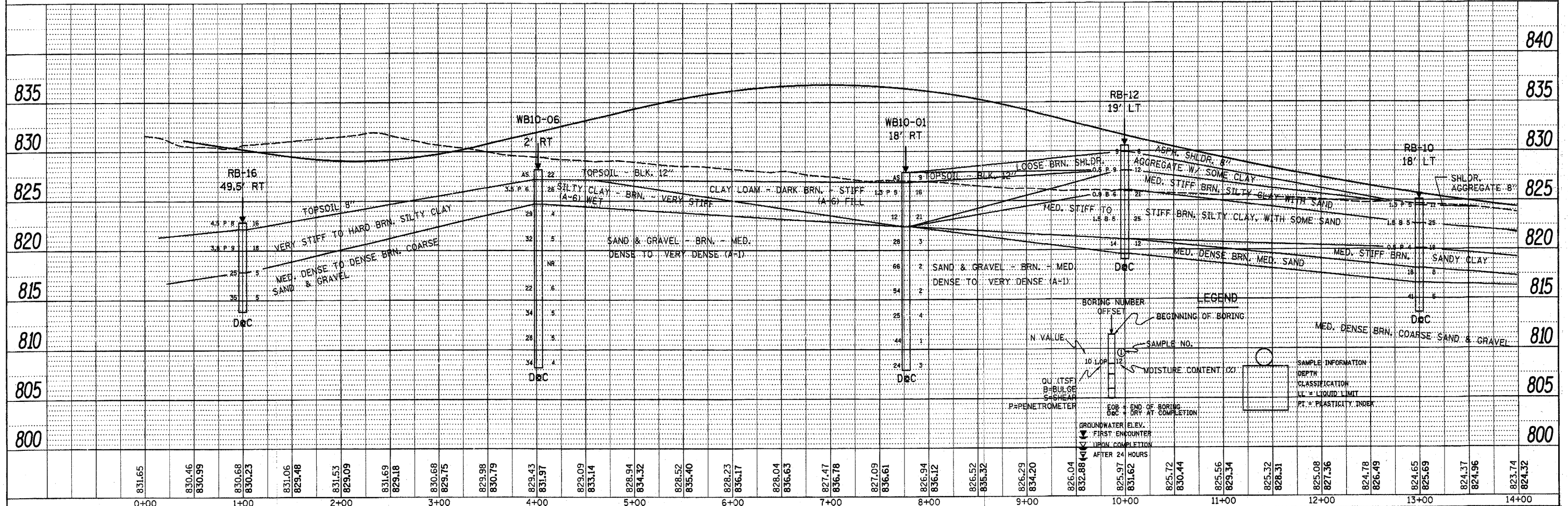


PLAN	SURVEYED	BY	DATE
	PLOTTED		
	GRADES CHECKED		
	STRUCTURE NOTATIONS CHECKED		
	NOTE BOOK NO.		
	FILE NAME		

PROFILE	SURVEYED	BY	DATE
	PLOTTED		
	GRADES CHECKED		
	STRUCTURE NOTATIONS CHECKED		
	NOTE BOOK NO.		
	FILE NAME		



FILE NAME =	USER NAME = lizekrf	DESIGNED -	REVISED -	STATE OF ILLINOIS DEPARTMENT OF TRANSPORTATION	SOILS PLAN AND PROFILE RAMP "D" (U.S. RTE. 20)				F.A.P. RTE. 345	SECTION 8R-HB-2-BY-1	COUNTY KANE	TOTAL SHEETS 434	SHEET NO. 70
of:\pwork\pwork\lizekrf\d0161624\sh-10\soils.dgn		DRAWN -	REVISED -		SCALE:	SHEET NO.	OF SHEETS	STA. TO STA.	CONTRACT NO. 60K90				
		CHECKED -	REVISED -						ILLINOIS FED. AID PROJECT				
		DATE	REVISED										