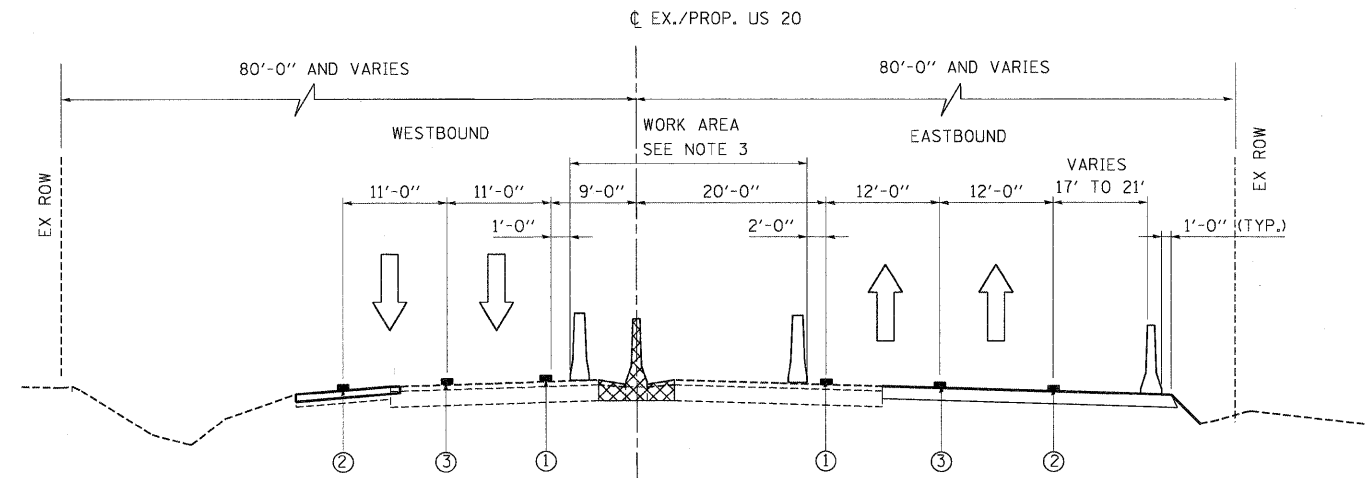
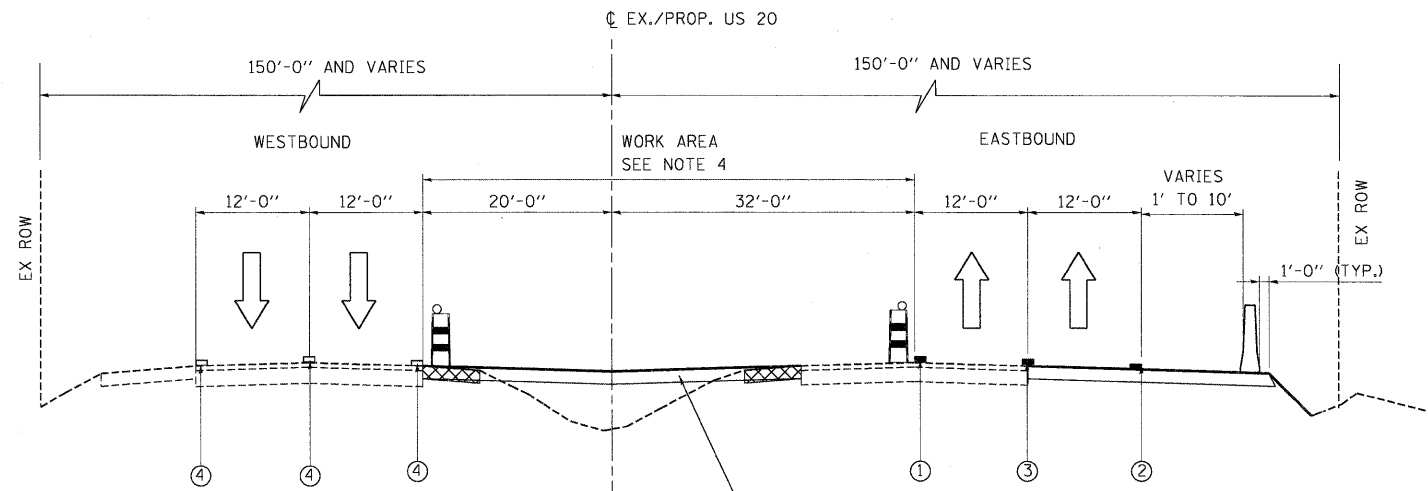


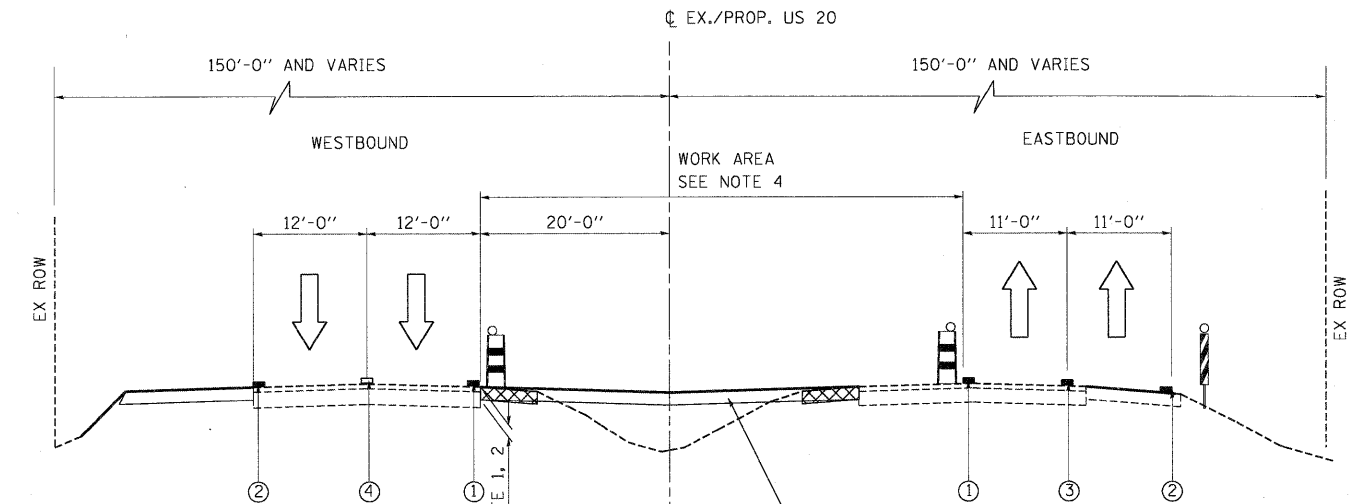
US 20 BRIDGE OVER MCLEAN BLVD.  
STAGE I TYPICAL SECTION



US-20  
STAGE II TYPICAL SECTION  
EAST OF MCLEAN BLVD.  
MAINLINE CROSSOVER



US-20  
STAGE II TYPICAL SECTION  
WEST OF MCLEAN BLVD.  
MAINLINE CROSSOVER



US-20  
STAGE II TYPICAL SECTION  
WEST PROJECT LIMIT  
MAINLINE CROSSOVER

**NOTES:**

1. THE DROP-OFF HEIGHT AT THE EDGE OF PAVEMENT SHOULD BE LESS THAN OR EQUAL TO 12 INCH WHEN THE TRAFFIC IS ADJACENT TO THE DROP OFF LOCATION. IF THE DROP-OFF HEIGHT IS GREATER THAN 12 INCH AND LESS THAN OR EQUAL TO 18 INCHES THEN CONSTRUCTION SHALL BE LIMITED TO 0.5 MILE OR LESS THAN 48 HOURS.
2. CHANNELIZING DEVICES ALONG US ROUTE 20 SHALL BE PLACED AT THE DROP-OFF LOCATIONS TO PRESERVE LANE WIDTH DURING DAY TIME. THE REFLECTIVE AREA SHALL BE RAISED TO THE ELEVATION ABOVE TRAVELING LANE OR SHOULDER PROFILE AS REQUIRED BY STANDARD 701901.
3. THE RESIDENT ENGINEER SHALL CONTACT THE TRAFFIC CONTROL SUPERVISOR AT 847.705.4470 A MINIMUM OF 72 HOURS PRIOR TO THE PLACEMENT OF ANY TEMPORARY TRAFFIC CONTROL DEVICES.
4. THE TEMPORARY CONCRETE BARRIER SHALL BE SECURED TO THE PAVEMENT USING SIX ANCHORING PINS AT THE LOCATIONS THAT IT IS ONE FOOT OR LESS FROM EDGE OF THE ROADWAY OR ANY OTHER LOCATIONS AS DIRECTED BY THE ENGINEER. COSTS OF THE ANCHORING PINS ARE INCLUDED IN THE CONTRACT UNIT PRICE FOR TEMPORARY CONCRETE BARRIER, OR "TEMPORARY CONCRETE BARRIER (INSTALL ONLY)", OR "RELOCATE TEMPORARY CONCRETE BARRIER" (AS APPLICABLE).
5. TYPE III TEMPORARY PAVEMENT MARKING TAPE FOR WET CONDITION OF VARIOUS SIZES AS SHOWN ON THE PLAN SHALL BE USED ON ALL NEWLY PAVED SURFACES AND ON ALL EXISTING PAVEMENT SURFACE THAT WILL REMAIN.
6. CONSTRUCT MEDIAN CROSSOVER AT TWO LOCATIONS EAST OF MCLEAN BLVD. ALONG US ROUTE 20 AS SHOWN IN THE ROADWAY PLANS.
7. CONSTRUCT MEDIAN CROSSOVER AT TWO LOCATIONS AND RECONSTRUCT/WIDEN EASTBOUND INSIDE SHOULDER ALONG US ROUTE 20 WEST OF MCLEAN BLVD. AS SHOWN IN THE ROADWAY PLANS.

**LEGEND**

- TEMPORARY CONCRETE BARRIER
- VERTICAL PANELS WITH FLASHING LIGHT
- DRUM OR BARRICADE WITH FLASHING LIGHT (SEE NOTE 2)
- TRAFFIC FLOW
- TEMPORARY PAVEMENT
- REMOVAL

- ① WET REFLECTIVE TEMP. TAPE TYPE III - LINE 4" YELLOW
- ② WET REFLECTIVE TEMP. TAPE TYPE III - LINE 4" WHITE
- ③ WET REFLECTIVE TEMP. TAPE TYPE III - LINE 4" WHITE (10' DASH - 30' SKIP)
- ④ EXISTING PVMT. MARKING

\\S:\0844\MAIN\PLT\ID\TRANS\07\2202\2379\081\CIVIL\CA\AD\68K\90\91\STAGING\02.DGN  
 5-12-2011 10:06:19  
 \\S:\0844\MAIN\PLT\ID\TRANS\07\2202\2379\081\CIVIL\CA\AD\68K\90\91\STAGING\02.DGN  
 5-12-2011 10:06:19

FILE NAME *	USER NAME * #USER#	DESIGNED - MM	REVISED -	<b>STATE OF ILLINOIS</b> <b>DEPARTMENT OF TRANSPORTATION</b> FAP ROUTE 345 / US ROUTE 20	<b>STAGING AND TRAFFIC CONTROL</b> <b>U.S. ROUTE 20 TYPICAL SECTIONS</b> <b>STAGE I AND II</b>			F.A.P. RTE.	SECTION	COUNTY	TOTAL SHEETS	SHEET NO.			
#FILE#		DRAWN - MM	REVISED -		SCALE: 1"=10'	SHEET NO.	OF	SHEETS	STA.	TO STA.	345	8R-HB-2-BY-1	KANE	434	78
		CHECKED - PB	REVISED -								CONTRACT NO. 60K90				
		DATE - 05/18/11	REVISED -								FED. ROAD DIST. NO. [ILLINOIS] FED. AID PROJECT				

