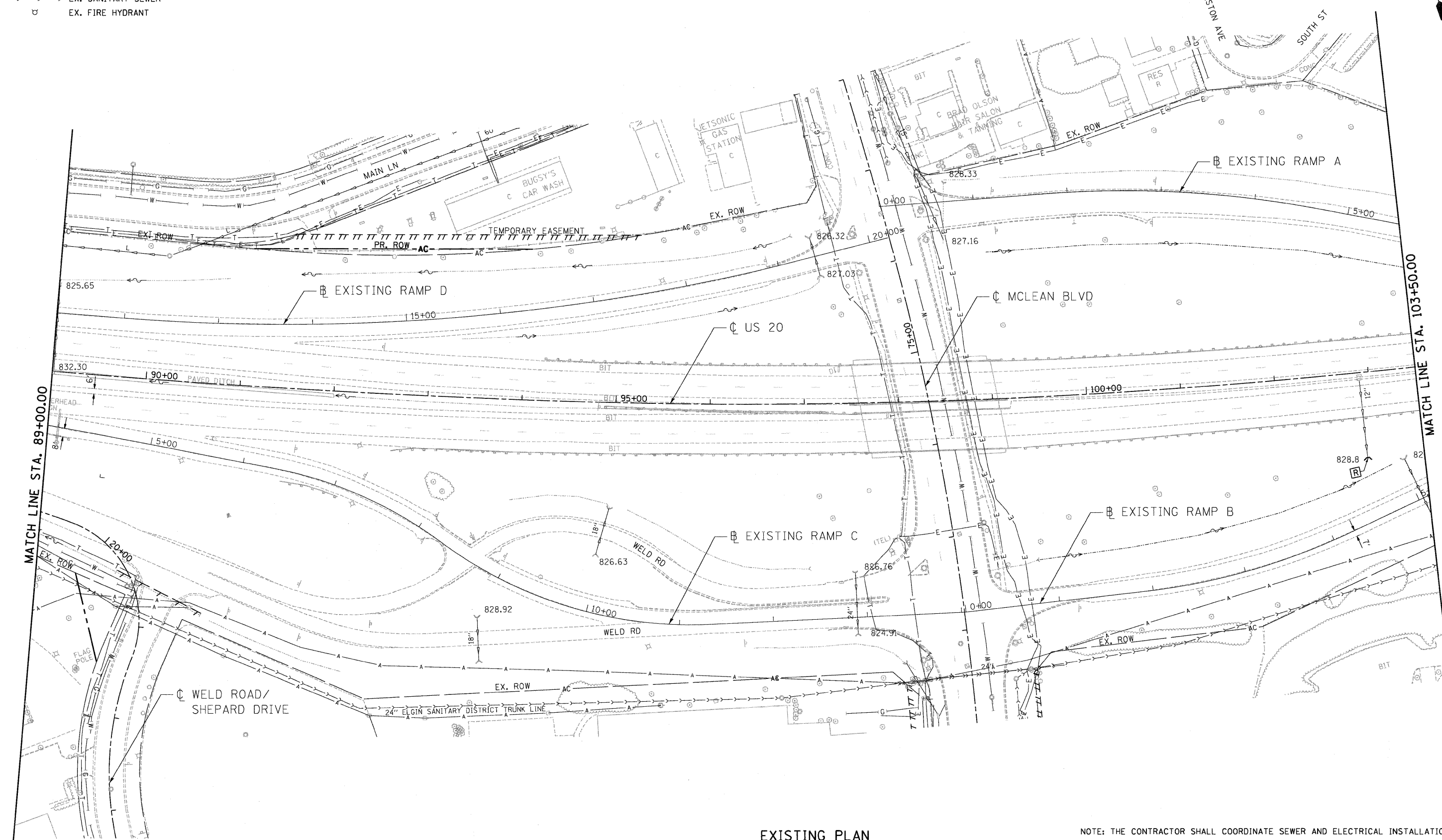
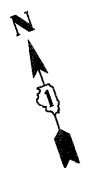


LEGEND

- EX. INLET
- EX. CATCH BASIN
- EX. MANHOLE
- EX. STORM SEWER
- - - EX. SANITARY SEWER
- ⊕ EX. FIRE HYDRANT
- PIPE REMOVAL
- [R] STRUCTURE TO BE REMOVED
- [ADJ] STRUCTURE TO BE ADJUSTED



EXISTING PLAN

NOTE: THE CONTRACTOR SHALL COORDINATE SEWER AND ELECTRICAL INSTALLATION.

\\168k99-b00d001000...DIMASTER-ALIGNMNT.DGN...DIMASTER-LEGEND.DGN...DIMASTER-ORIGLINE.DGN...DIMASTER-ROWSE.DGN...DIMASTER-TOPDE.DGN...DIMASTER-UTIL.DGN...DIMASTER-SUB.DGN
 05-12-2011 10:15:45
 DIMASTER-ALIGNMNT.DGN...DIMASTER-LEGEND.DGN...DIMASTER-ORIGLINE.DGN...DIMASTER-ROWSE.DGN...DIMASTER-TOPDE.DGN...DIMASTER-UTIL.DGN...DIMASTER-SUB.DGN
 DIMASTER-UTIL.DGN...DIMASTER-SUB.DGN...DIMASTER-ROWSE.DGN...DIMASTER-TOPDE.DGN...DIMASTER-ORIGLINE.DGN...DIMASTER-LEGEND.DGN...DIMASTER-ALIGNMNT.DGN

FILE NAME =	USER NAME = #USER#	DESIGNED - SH	REVISED -	STATE OF ILLINOIS DEPARTMENT OF TRANSPORTATION FAP ROUTE 345 / US ROUTE 20		DRAINAGE AND UTILITY PLAN U.S. ROUTE 20		F.A.P. RTE.	SECTION	COUNTY	TOTAL SHEETS	SHEET NO.
#FILE#		DRAWN - SH, FS	REVISED -					345	8R-HB-2-BY-1	KANE	434	144
PLOT SCALE = #SCALE#		CHECKED - TL	REVISED -	SCALE: 1"=50'		SHEET NO. OF SHEETS		STA. 89+00.00 TO STA. 103+50.00		CONTRACT NO. 60K90		
PLOT DATE = #DATE#		DATE - 05/18/11	REVISED -	FED. ROAD DIST. NO. [ILLINOIS] FED. AID PROJECT								

