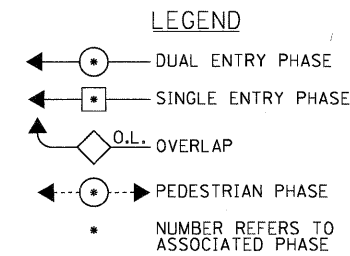
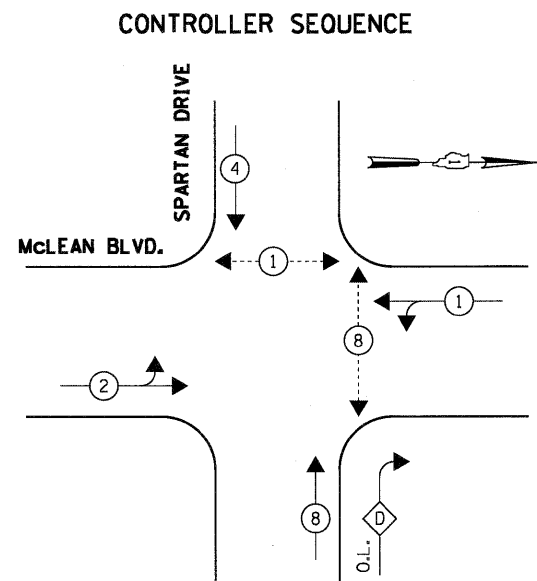


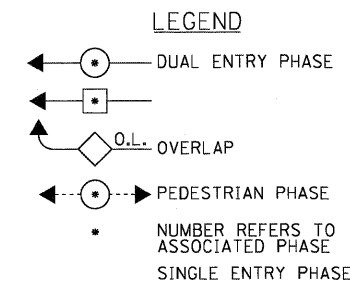
EXISTING PHASE DESIGNATION DIAGRAM



OVERLAP LETTER PERMISSIVE PHASE PROTECTED PHASE
 D = 8 + 5

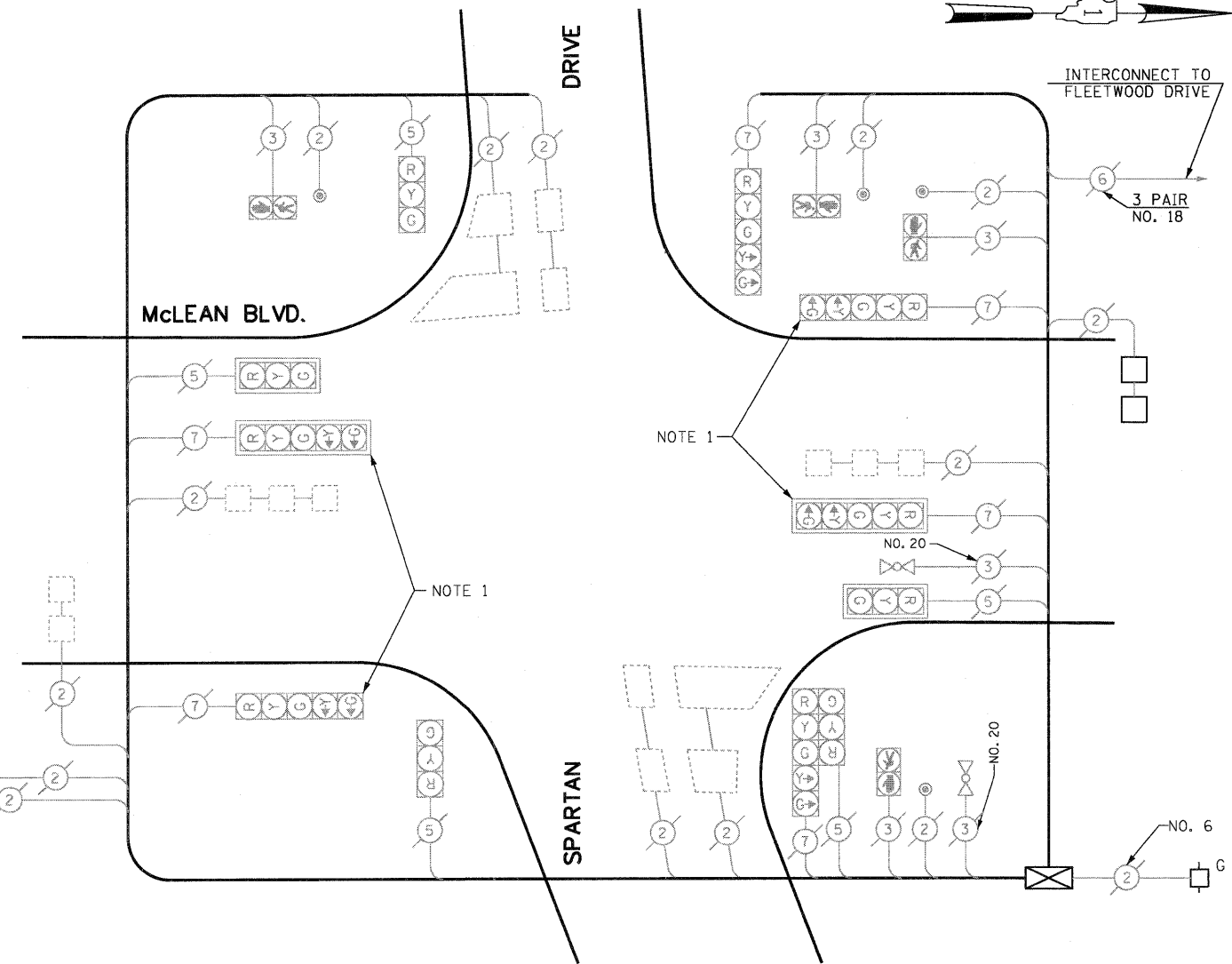


MODIFIED PHASE DESIGNATION DIAGRAM
 (FOR STAGE I.1 ONLY)



OVERLAP LETTER PERMISSIVE PHASE PROTECTED PHASE
 D = 8 + 1

EXISTING SAMPLING LOOPS



CABLE PLAN
 (NOT TO SCALE)

NOTE 1: THE YELLOW LEFT ARROW IN THE FIVE SECTION SIGNAL HEADS FOR THE NORTHBOUND AND SOUTHBOUND DIRECTION OF TRAFFIC SHALL BE DISABLED DURING SPLIT PHASE OPERATION FOR NORTH-SOUTH DIRECTION OF TRAFFIC (IN CONSTRUCTION STAGE I.1).

SCHEDULE OF QUANTITIES

| QUANTITY | UNIT | ITEM |
|----------|------|---|
| 1 | EACH | MAINTENANCE OF EXISTING TRAFFIC SIGNAL INSTALLATION |
| 2 | EACH | DRILL EXISTING HANDHOLE |
| 66 | FOOT | DETECTOR LOOP, TYPE I |
| 1 | EACH | MODIFY EXISTING CONTROLLER |
| 1 | EACH | TEMPORARY TRAFFIC SIGNAL TIMING |

| I.D.O.T. TRAFFIC SIGNAL INSTALLATION ELECTRICAL SERVICE REQUIREMENTS | | | | | TOTAL WATTAGE |
|---|----------|---------|-----|------------|---------------|
| TYPE | NO LAMPS | WATTAGE | | %OPERATION | |
| SIGNAL (RED) | 11 | 135 | 17 | 0.50 | 93.50 |
| (YELLOW) | 11 | 135 | 25 | 0.25 | 68.75 |
| (GREEN) | 11 | 135 | 15 | 0.25 | 41.25 |
| ARROW | 12 | 135 | 12 | 0.10 | 14.4 |
| PED. SIGNAL | 4 | 90 | 25 | 1.00 | 100.00 |
| CONTROLLER | 1 | 100 | 100 | 1.00 | 100.00 |
| ILLUM. SIGN | | | 25 | 0.05 | |
| FLASHER | | | | 0.50 | |
| ENERGY COSTS TO: | | | | TOTAL = | 417.9 |
| CITY OF ELGIN 150 DEXTER COURT ELGIN, ILLINOIS 60120-5570 | | | | | |
| ENERGY SUPPLY CONTACT: ELLIE SARALLO PHONE: (630) 424 5124 COMPANY: COMMONWEALTH EDISON | | | | | |

| | | | |
|-------------|----------------------|------------------|-----------|
| FILE NAME = | USER NAME = *USER* | DESIGNED - PKG | REVISED - |
| *FILE# | | DRAWN - MAA, EA | REVISED - |
| | PLOT SCALE = *SCALE* | CHECKED - PKG | REVISED - |
| | PLOT DATE = *DATE* | DATE - 5/18/2011 | REVISED - |

STATE OF ILLINOIS
DEPARTMENT OF TRANSPORTATION

| | | | | | | |
|---|---------------------|-----------------|----------------------|-------------|------------------|---------------|
| CABLE PLAN, EXISTING PHASE DESIGNATION DIAGRAM, MODIFIED PHASE DESIGNATION DIAGRAM, SCHEDULE OF QUANTITIES McLEAN BOULEVARD AT SPARTAN DRIVE | | F.A.P. RTE. 345 | SECTION 8R-HB-2-BY-1 | COUNTY KANE | TOTAL SHEETS 434 | SHEET NO. 216 |
| SCALE: | SHEET NO. OF SHEETS | STA. TO STA. | CONTRACT NO. 60K90 | | | |
| FED. ROAD DIST. NO. - ILLINOIS FED. AID PROJECT | | | | | | |