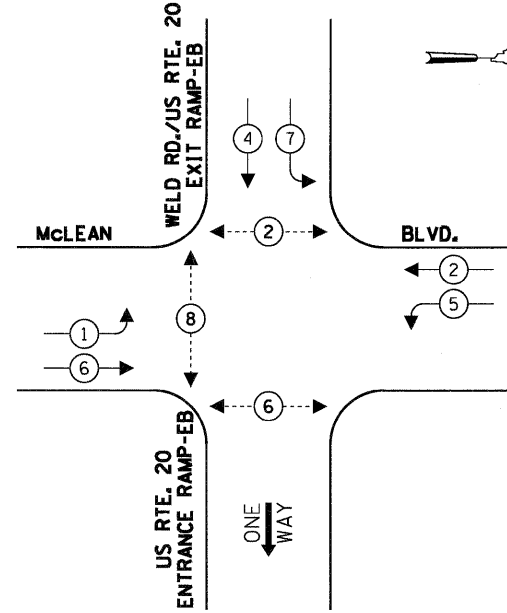


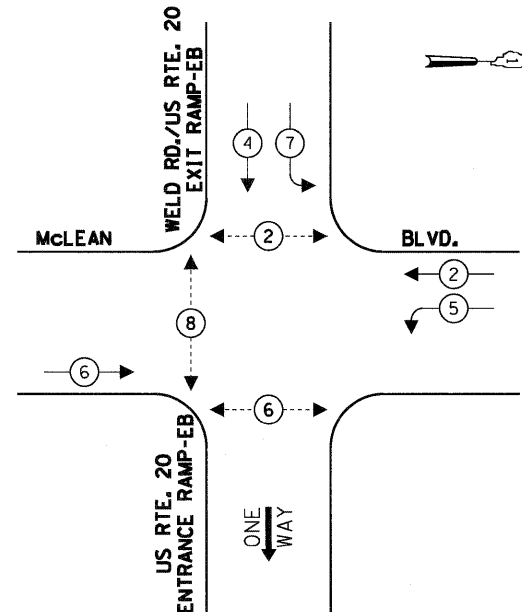
CONTROLLER SEQUENCE



EXISTING PHASE DESIGNATION DIAGRAM

- LEGEND**
- ◀ (circle with dot) DUAL ENTRY PHASE
 - ◀ (square) SINGLE ENTRY PHASE
 - ◀ (diamond with O.L.) OVERLAP
 - ◀ (circle with dot) PEDESTRIAN PHASE
 - * NUMBER REFERS TO ASSOCIATED PHASE

CONTROLLER SEQUENCE



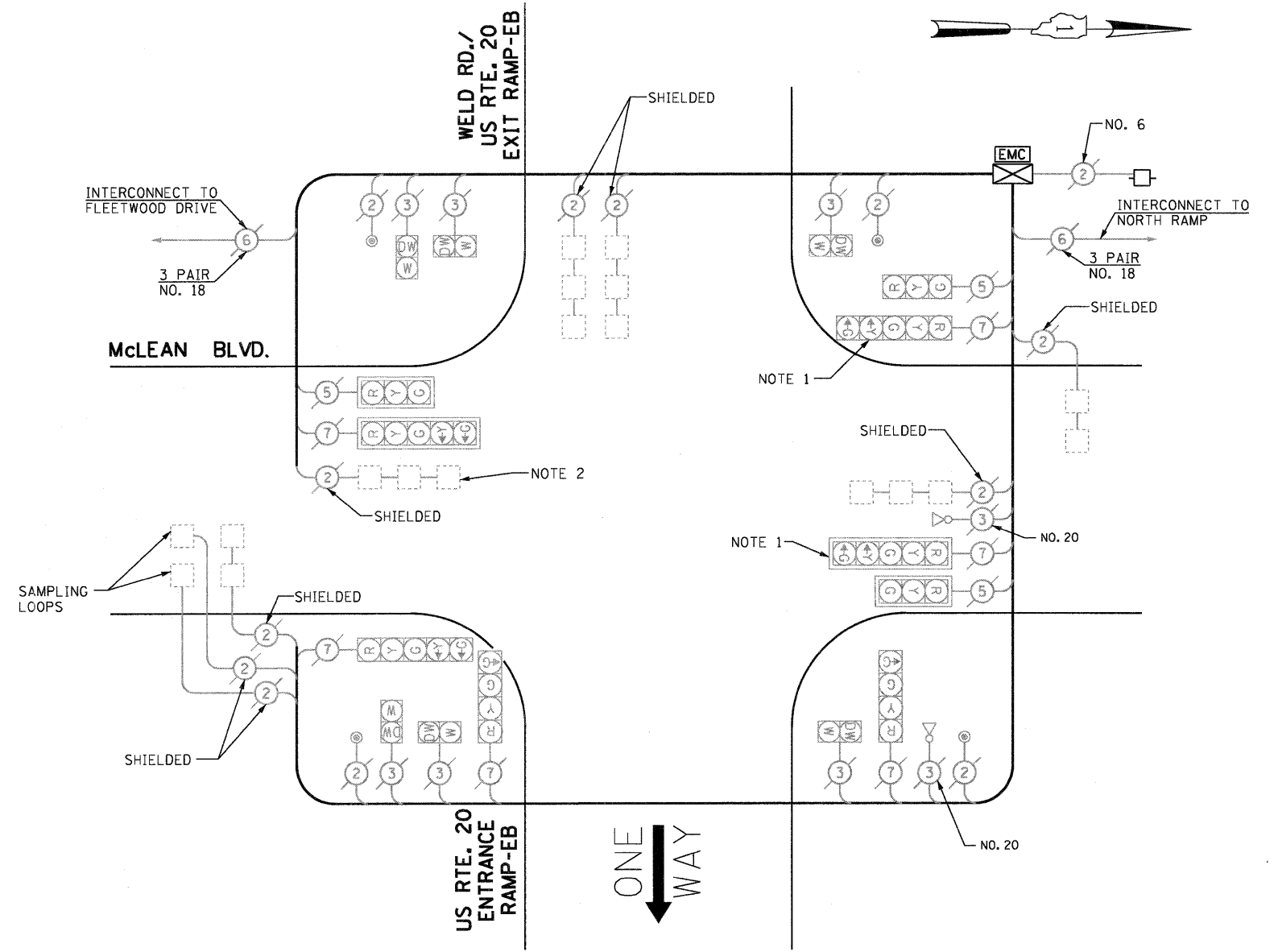
MODIFIED PHASE DESIGNATION DIAGRAM

- LEGEND**
- ◀ (circle with dot) DUAL ENTRY PHASE
 - ◀ (square) SINGLE ENTRY PHASE
 - ◀ (diamond with O.L.) OVERLAP
 - ◀ (circle with dot) PEDESTRIAN PHASE
 - * NUMBER REFERS TO ASSOCIATED PHASE

SCHEDULE OF QUANTITIES

QUANTITY	UNIT	ITEM
1	EACH	MAINTENANCE OF EXISTING TRAFFIC SIGNAL INSTALLATION
1	EACH	MODIFY EXISTING CONTROLLER

MODIFIED CABLE PLAN
ALL STAGES (ADVANCE CONTRACT)
(NOT TO SCALE)



NOTE 1: THE GREEN AND YELLOW LEFT TURN ARROW INDICATION SECTIONS IN THE EXISTING 5-SECTION BRACKET MOUNTED AND MAST ARM MOUNTED SIGNAL HEADS FOR NORTHBOUND DIRECTION OF TRAFFIC SHALL BE DISCONNECTED AT THE CONTROLLER WHEN WELD ROAD WILL BE CLOSED TO TRAFFIC AT ITS INTERSECTION WITH SOUTH RAMPS. THIS WORK SHALL BE INCLUDED IN "MODIFY EXISTING CONTROLLER".

NOTE 2: WHEN WELD ROAD IS CLOSED TO TRAFFIC AT THIS INTERSECTION, THE LEFT TURN PHASE FOR NORTHBOUND TO WESTBOUND DIRECTION OF TRAFFIC, INCLUDING THE DETECTOR LOOPS, SHALL BE DISABLED AT THE CONTROLLER. THIS WORK SHALL BE INCLUDED IN "MODIFY EXISTING CONTROLLER".

NOTE 3: THE LEFT TURN LANE FOR NORTHBOUND TO WESTBOUND TURNING MOVEMENT WILL BE RE-STRIPED FOR ELIMINATION OF THE LEFT TURN LANE, WHEN WELD ROAD WILL BE CLOSED TO TRAFFIC AT THIS INTERSECTION.

THE TRAFFIC SIGNAL CONTROL EQUIPMENT FOR THIS PROJECT SHALL BE "MULTISONICS 820A" TO MATCH THE EXISTING ADJACENT SYSTEM.

I.D.O.T. TRAFFIC SIGNAL INSTALLATION ELECTRICAL SERVICE REQUIREMENTS					TOTAL WATTAGE
TYPE	NO LAMPS	WATTAGE		%OPERATION	
SIGNAL (RED)	9	135	17	0.50	607.5
(YELLOW)	9	135	25	0.25	303.75
(GREEN)	11	135	15	0.25	371.25
ARROW	4	135	12	0.10	54
PED. SIGNAL	6	90	25	1.00	540
CONTROLLER	1	100	100	1.00	100
ILLUM. SIGN				0.05	
FLASHER				0.50	
ENERGY COSTS TO:				TOTAL =	1976.5

CITY OF ELGIN
150 DEXTER COURT
ELGIN, ILLINOIS 60120-5570
ENERGY SUPPLY CONTACT: ELLIE SARALLO
PHONE: (630) 424 5124
COMPANY: COMMONWEALTH EDISON