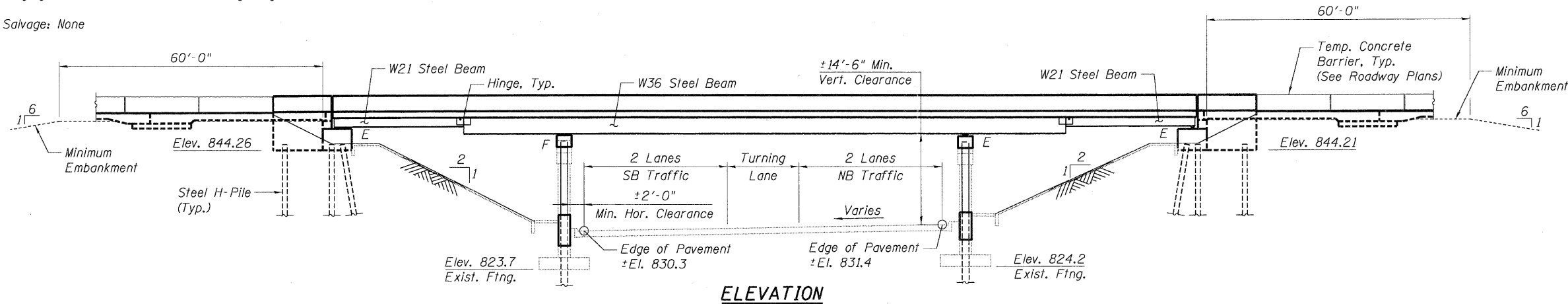


Bench Mark: Cross cut on top of existing bridge deck near NE corner of WB US 20 over McLean Boulevard bridge (SN 045-0002), located 2.1' south of north parapet and 8.0' west of east edge of deck. Elevation = 849.53

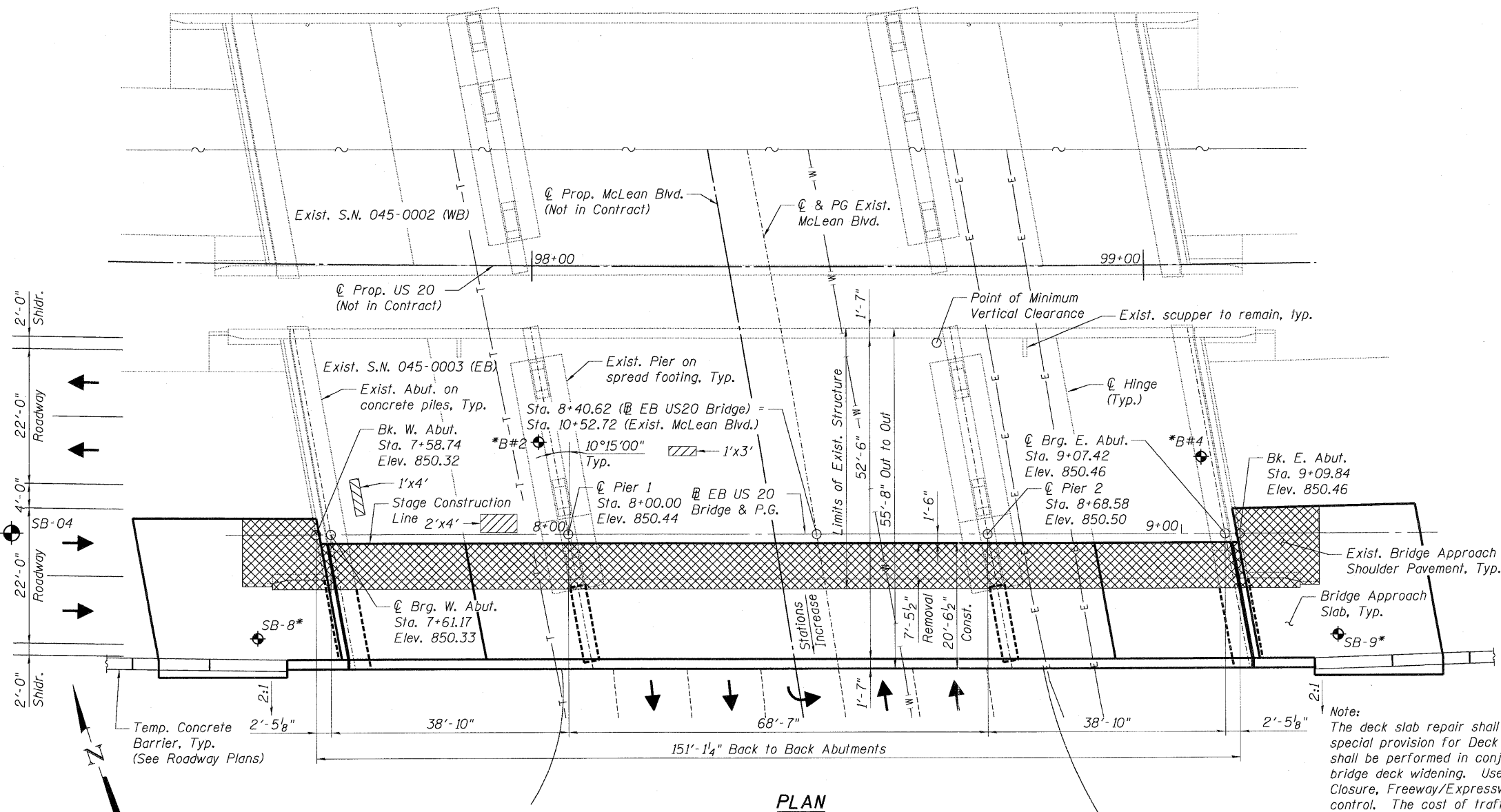
Existing Structures: S.N. 045-0002 (WB) and 045-0003 (EB) built in 1960 as FA Route 6 Section 8R-HB-2 at Sta. 98+40.40. Both structures were widened in 1987. Each structure consists of concrete deck on three-span continuous steel beams. The structures have an overall length of 150'-1" and widths of 42'-11" (WB) and 42'-7" (EB). The spans are supported by concrete piers on spread footings and concrete stub abutments on piles.

Staging: Traffic to be maintained using stage construction.

Salvage: None



ELEVATION



PLAN

DESIGN SPECIFICATIONS

AASHTO Standard Specifications for Highway Bridges 17th Edition, 2002

LOADING HS 20-44

No allowance for future wearing surface

DESIGN STRESSES

FIELD UNITS - NEW CONSTRUCTION

$f'_c = 3.5$ ksi
 $f_y = 60$ ksi (Reinforcement)
 $f_y = 50$ ksi (Structural Steel)
 AASHTO M270 Grade 50

FIELD UNITS - EXISTING

$f'_c = 3.5$ ksi (1986)
 $f'_c = 2.8$ ksi (1959)
 $f_y = 60$ ksi (Reinforcement) (1986)
 $f_y = 40$ ksi (Reinforcement) (1959)
 $f_y = 36$ ksi (Structural Steel) (1986)
 $f_y = 33$ ksi (Structural Steel) (1959)
 Max. Soil Bearing Pressure = 1.5 tsf (1986)

SEISMIC DATA

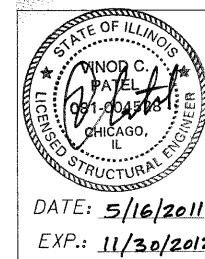
Seismic Performance Category (SPC) = A
 Bedrock Acceleration Coefficient (A) = 0.036g
 Site Coefficient (S) = 1.0

CURVE DATA

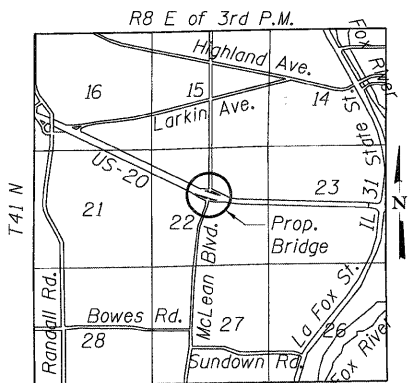
US 20	McLean Boulevard
N/A: Lanes in temporary MOT condition for which no curve data has been defined.	$\Delta = 16^\circ 23' 00''$ (LT)
	$D = 2^\circ 21' 47.3''$
	$T = 349.05'$
	$L = 693.3'$
	$E = 24.56'$
	$R = 2,424.74'$
	S.E. = 0.034'/ft
	P.C. = Sta. 8+35.45
	P.T. = Sta. 11+84.50
	P.I. = Sta. 15+28.75

APPROVED
 FOR STRUCTURAL ADEQUACY ONLY

W. Carl Pusey (SE)
 ENGINEER OF BRIDGES AND STRUCTURES



DATE: 5/16/2011
 EXP.: 11/30/2012



LOCATION SKETCH

- Legend:**
- Boring Location
 - Concrete Removal
 - Deck Slab Repair (Partial), Special See Note
 - W- Underground Water Line
 - T- Underground Telephone Line
 - E- Underground Electric Line

* Logs for Record Borings shown are available in Existing Structure Plans. See Special Provisions.

GENERAL PLAN & ELEVATION
US ROUTE 20 OVER MCLEAN BLVD.
FAP ROUTE 345, SECTION 8R-R
KANE COUNTY
STATION 98+32.18
STRUCTURE NO. 045-0003

FILE NAME =	USER NAME = #USERS	DESIGNED - PK	REVISED -	STATE OF ILLINOIS DEPARTMENT OF TRANSPORTATION US 20 OVER MCLEAN BOULEVARD		GENERAL PLAN AND ELEVATION		F.A.P. R.T.E.	SECTION	COUNTY	TOTAL SHEETS	SHEET NO.
#FILEL#		DRAWN - PK	REVISED -			SCALE:	SHEET NO. S-1 OF S-29	STA. 98+32.18	345	8R-HB-2-BY-1	KANE	434
TENG TENG & ASSOCIATES, INC. ENGINEERS/ARCHITECTS/PLANNERS CHICAGO, ILLINOIS	PLOT SCALE = #SCALE#	CHECKED - MDB	REVISED -					SN 045-0003		CONTRACT NO. 60K90		
	PLOT DATE = #DATE#	DATE - 05/18/11	REVISED -					FED. ROAD DIST. NO. 7 (ILLINOIS) FED. AID PROJECT				