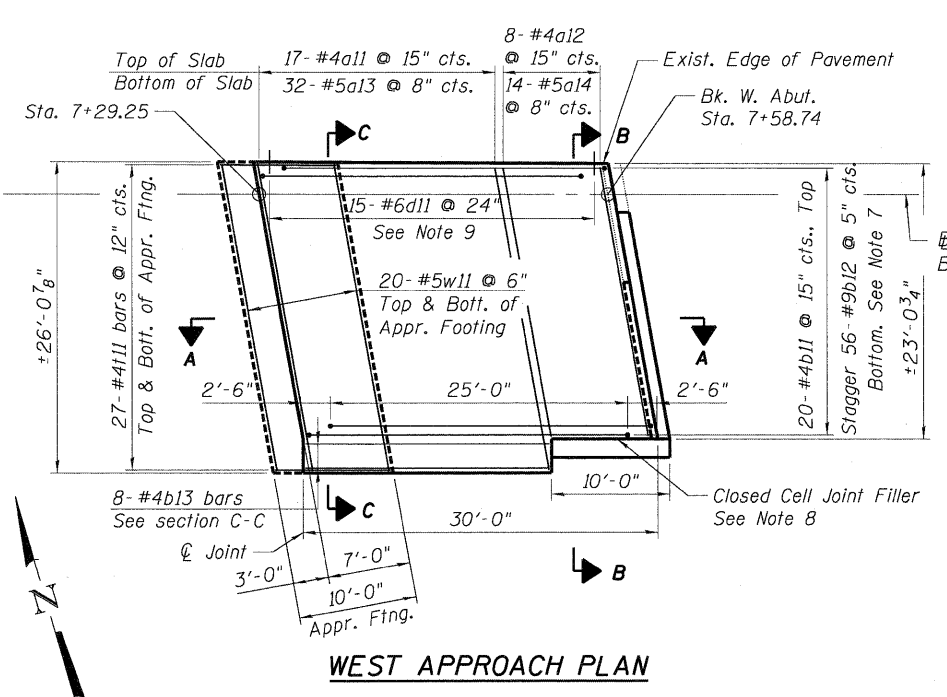
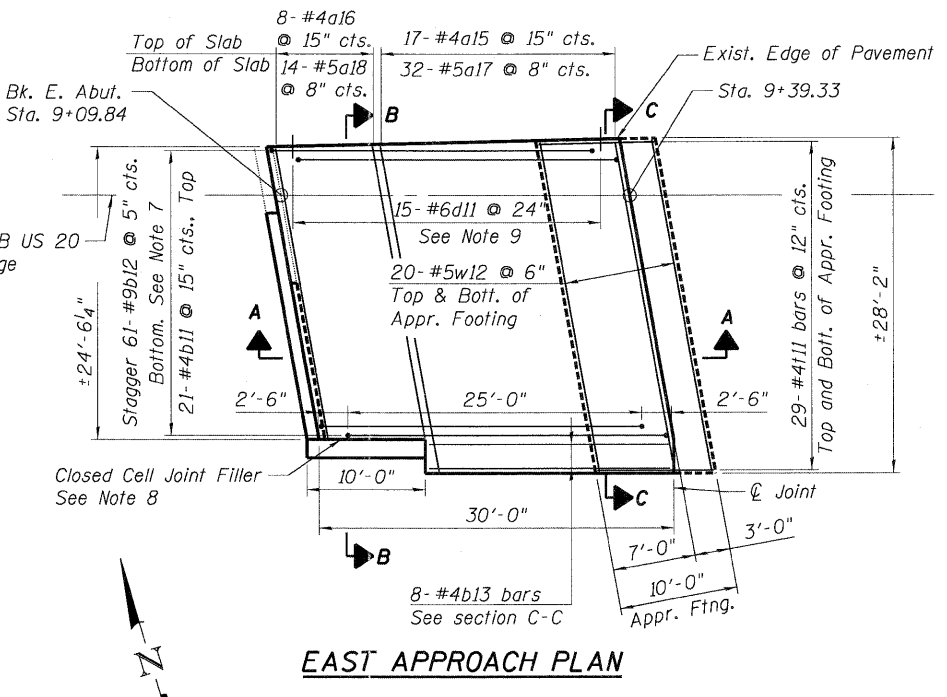


0450003-60K90-001-APPRPMT.DEN... 0450003-60K90-001-APPRPMT.DEN... 0450003-60K90-001-APPRPMT.DEN... 0450003-60K90-001-APPRPMT.DEN... 0450003-60K90-001-APPRPMT.DEN...
 HAYMARZ
 5-13-2011, 15:27:44



WEST APPROACH PLAN



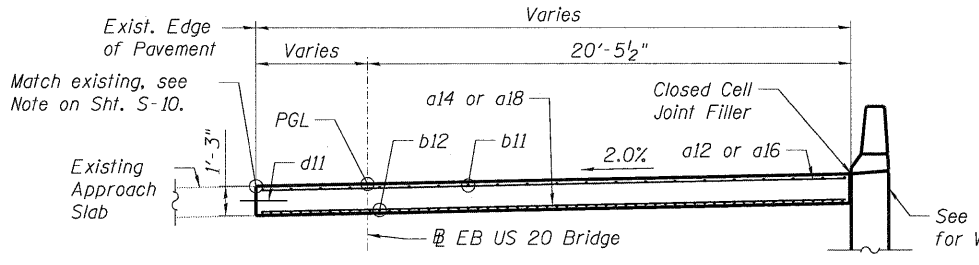
EAST APPROACH PLAN

APPROACH BAR LIST
(Total for both Approaches)

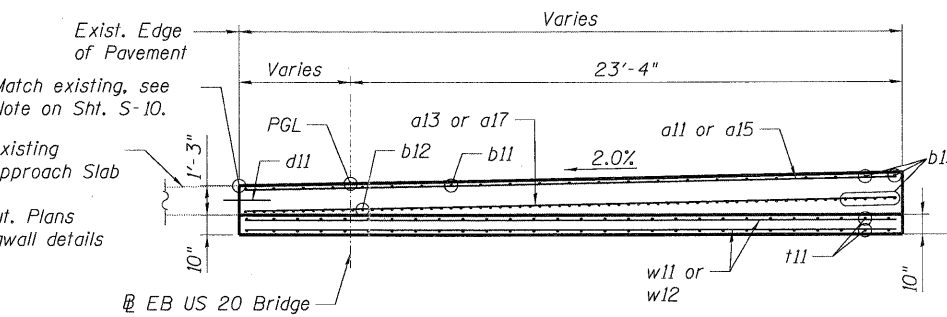
Bar	No.	Size	Length	Shape
a11	17	#4	26'-1"	—
a12	8	#4	23'-1"	—
a13	32	#5	26'-1"	—
a14	14	#5	23'-1"	—
a15	17	#4	27'-10"	—
a16	8	#4	24'-7"	—
a17	32	#5	27'-10"	—
a18	14	#5	24'-7"	—
b11	41	#4	29'-8"	—
b12	117	#9	29'-9"	U
b13	16	#4	20'-8"	—
d11	30	#6	2'-0"	—
l11	112	#4	9'-8"	—
w11	40	#5	26'-0"	—
w12	40	#5	28'-0"	—

APPROACH BILL OF MATERIAL
(Total for both Approaches)

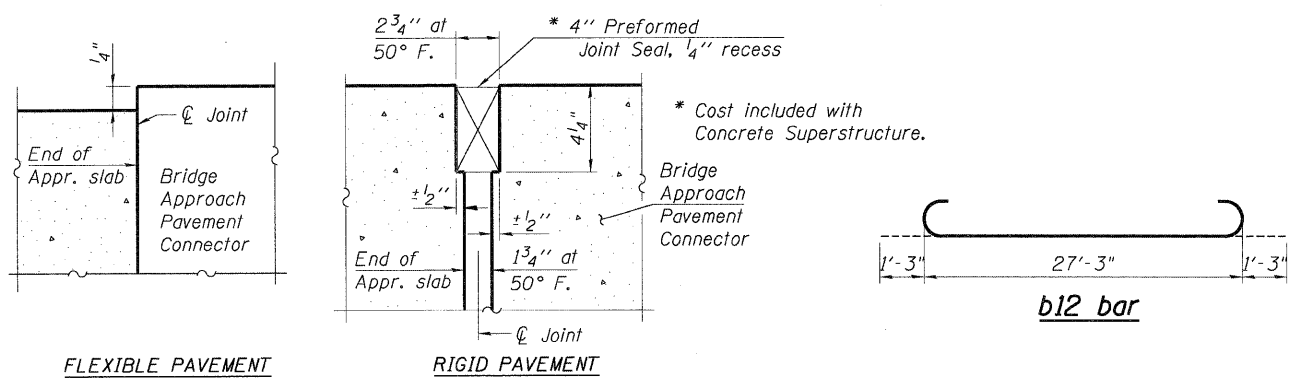
Item	Unit	Total
Concrete Structures	Cu. Yd.	17.0
Concrete Superstructure	Cu. Yd.	76.4
Bridge Deck Grooving	Sq. Yd.	167
Reinforcement Bars	Pound	19,300



SECTION B-B

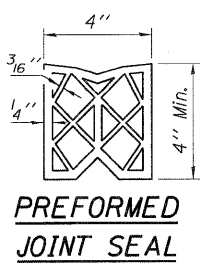


SECTION C-C

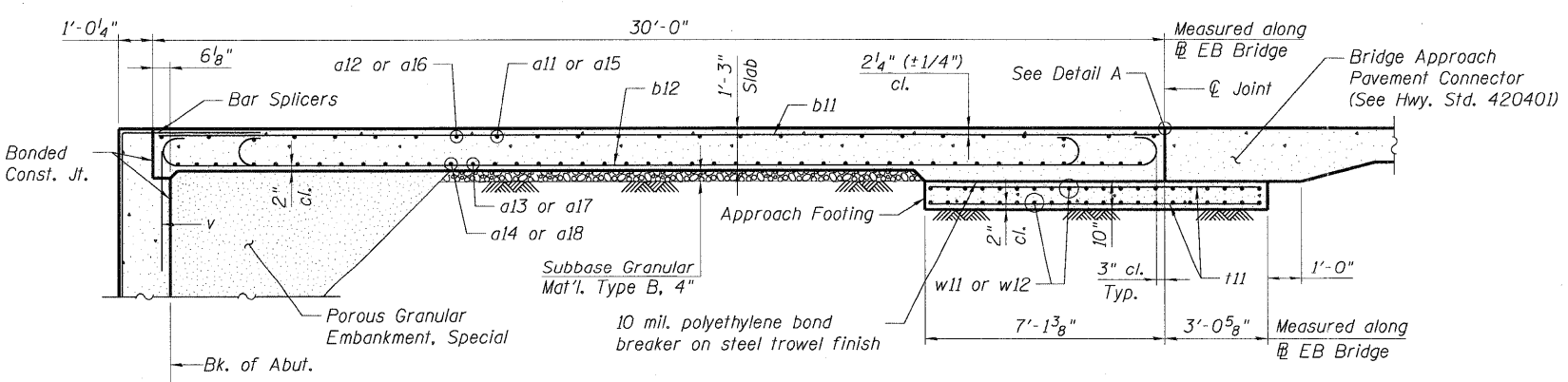


DETAIL A

- Notes:**
- The north edge of the bridge approach slabs shall be at the existing edge of pavement.
 - The Approach Slab shall be paid for as Concrete Superstructure.
 - The Approach Footing shall be paid for as Concrete Structures.
 - Cost of excavation for Approach Footing included with Concrete Structures.
 - Cost of Subbase Granular Material, polyethylene bond breaker on steel trowel finish, and Closed Cell Joint Filler included with Concrete Superstructure.
 - The Approach Footing maximum applied service bearing pressure (Q_{max}) = 2.0 ksf.
 - Tilt b12 bars as required to maintain clearance.
 - Closed Cell Joint Filler according to Article 105108 of the Standard Specifications, full depth of slab, full length of wing wall.
 - Drill and epoxy grout dowels in 8" min. drilled holes according to Section 584 of the Standard Specifications. Method and grout are subject to the approval of the Engineer. Locate dowels approximately at mid depth of the existing slab. Cost of drilling and grouting bars shall be included with Reinforcement Bars.



PREFORMED JOINT SEAL



SECTION A-A