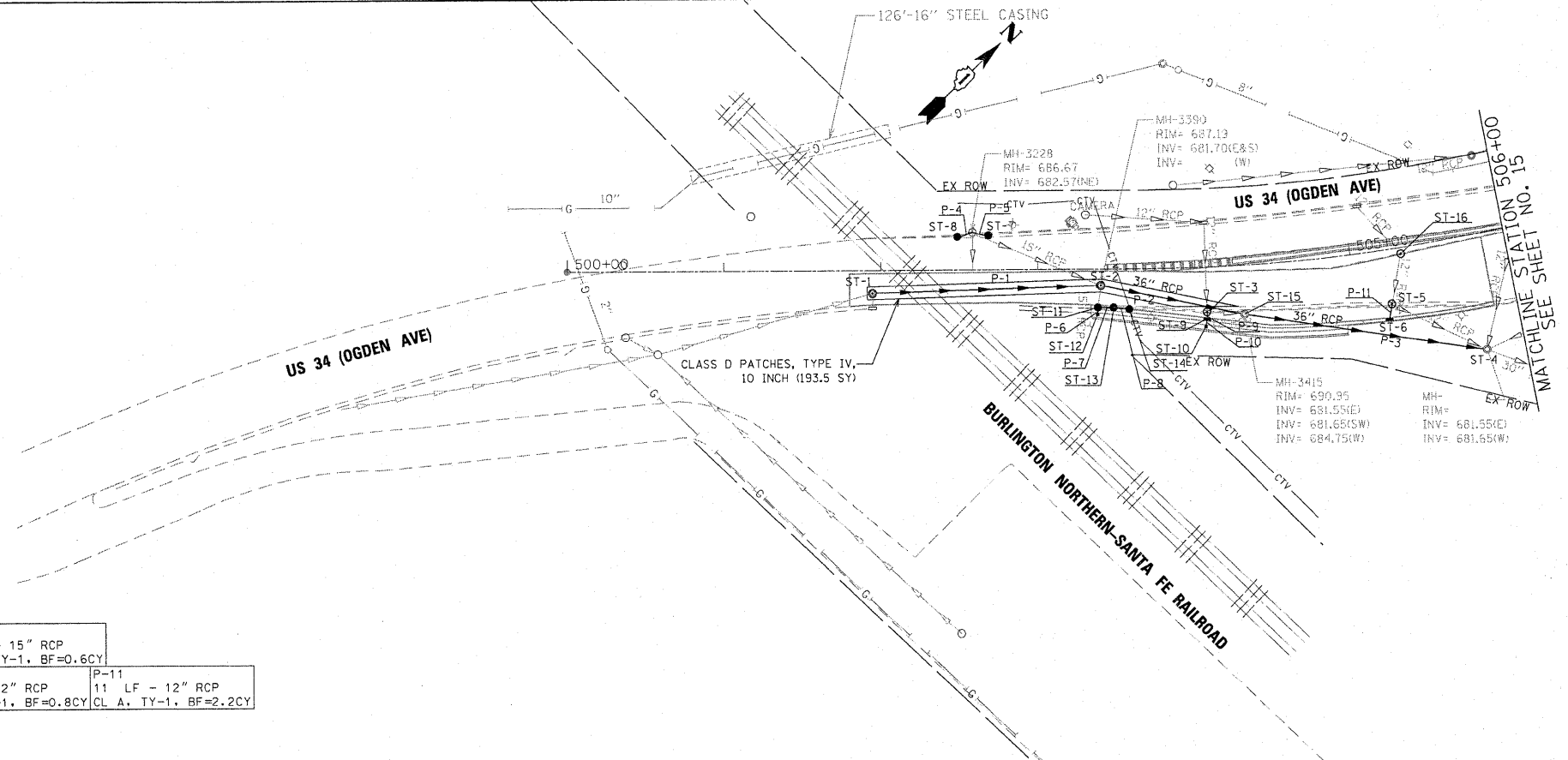


DATE	
BY	
REVIEWED	
PLANNED	
NOTED	
NO.	

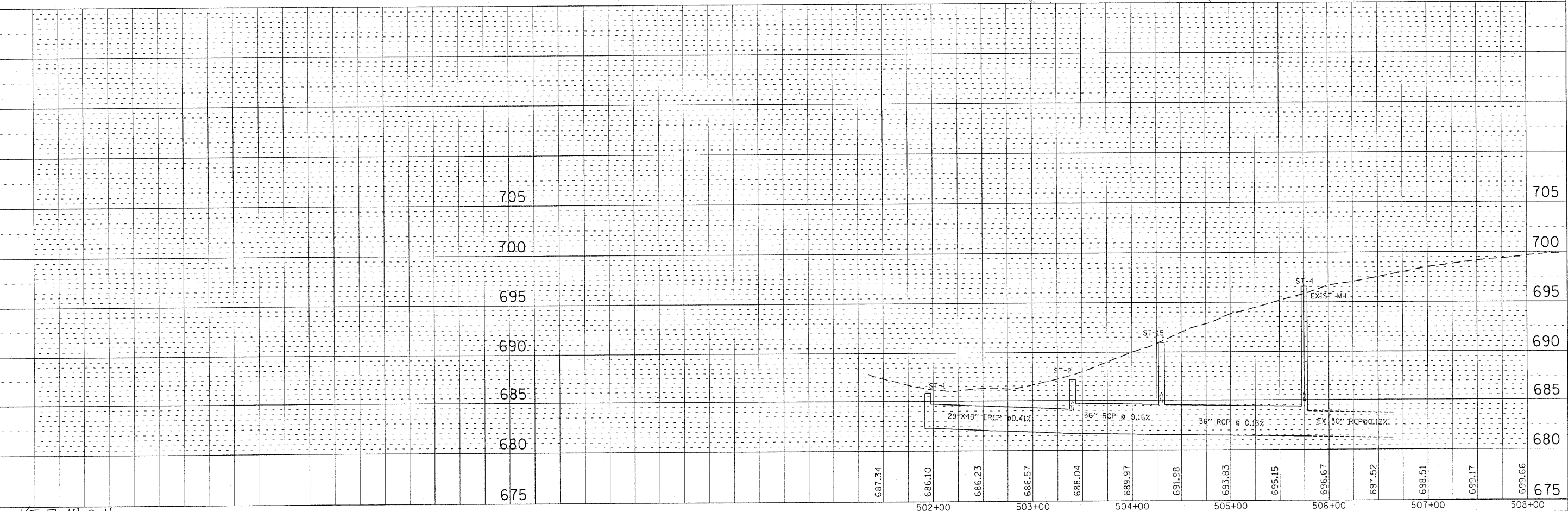
DATE	
BY	
REVIEWED	
PLANNED	
NOTED	
NO.	

ST-01 STA 501+94.6, 14.4' RT 6' MH TY A W/FR & LIDS T1 CL RIM = 685.80 INV (NE) = 682.30	ST-07 STA 502+68.48, 21.67' LT 2' CB TYPE C W/FR & LIDS TY-1, DL RIM = 686.89 INV (W) = 682.67	ST-13 STA 503+48.01, 24.10' RT 2' CB TY C W/FR & LIDS T1, DL RIM = 686.3 INV (S) = 681.31
ST-02 STA 503+40.0, 10.25' RT 6' MH TYPE A W/FR & LIDS T1 CL RIM = 687.19 INV = 681.70 (N.S)	ST-08 STA 502+48.57, 20.91' LT 2' CB TYPE C W/FR & LIDS T1, DL RIM = 686.76 INV (W) = 682.67	ST-14 STA 503+58.07, 25.31' RT 2' CB TYPE C W/FR & LIDS T1, DL RIM = 688.79 INV (W) = 681.51
ST-03 STA 504+06.6, 28.1' RT 4' CB TY D FR & LIDS TY-1 CL RIM = 689.31 INV = 684.71 (E)	ST-09 STA 504+06.5, 32.65' RT 2' CB TY C W/ TY-24 F&G RIM = 689.25 INV = 684.73 (E.W)	ST-15 STA 504+29.88, 30.71' RT 4' CB TY D W/FR & LIDS TY-1 CL RIM = 690.95 INV (SW) = 681.65 INV (E) = 681.55
ST-04 STA 505+75.21, 73.29' RT EX MH TO BE ADJUSTED RIM = INV (SW) = 681.65	ST-10 STA 504+05.6, 37.34' RT 2' INLET TYPE A W/ TY-9 F&G RIM = 692.02 INV = 684.75	ST-16 EX CB STA 505+32.48, 3.93' RT FR & LIDS TY-1 CL RIM = 694.68 INV (E) = 689.58
ST-05 STA 505+22.12, 34.34' RT 4' CB TY A W/FR & LIDS T1, CL RIM = 694.38 INV (S) = 689.18	ST-11 STA 503+38.0, 24.12' RT 4' CB TY A W/FR & LIDS T1, DL RIM = 684.91 INV = 681.11 (E)	
ST-06 STA 505+19.19, 43.92' RT 2' CB TYPE C W/ TY-24 F&G RIM = 694.06 INV (W) = 689.21	ST-12 STA 503+37.8, 28.59' RT 2' INLET TY A W/ TY-9 F&G RIM = 687.68 INV (SW) = 681.15	

P-01 146 LF-29"X45" ERCP CL A, TY-1, BF=44.1 CY	P-2 94 LF - 36" RCP CL A, TY-1, BF=67.5CY	P-3 158 LF - 36" RCP CL A, TY-1, BF=104.5CY	P-4 11 LF - 15" RCP CL A, TY-1, BF=2.8CY	P-5 11 LF - 15" RCP CL A, TY-1, BF=2.9CY	P-6 5 LF - 15" RCP CL A, TY-1, BF=0.6CY
P-7 10 LF - 15" RCP CL A, TY-1, BF=1.7CY	P-8 10 LF - 15" RCP CL A, TY-1, BF=3.8CY	P-9 5 LF - 12" RCP CL A, TY-1, BF=1.0CY	P-10 5 LF - 12" RCP CL A, TY-1, BF=0.8CY	P-11 11 LF - 12" RCP CL A, TY-1, BF=2.2CY	



DU-02



DESIGNED - TVN	REVISED -	STATE OF ILLINOIS DEPARTMENT OF TRANSPORTATION	US ROUTE 34 AT NORTH AURORA ROAD /RAYMOND DRIVE	DRAINAGE AND UTILITY PLAN	F.A.P. RTE. 311	SECTION 652X-N-3	COUNTY DUPAGE	TOTAL SHEETS 34	SHEET NO. 16
DRAWN - TVN	REVISED -							CONTRACT NO. 60L22	
CHECKED - RPD	REVISED -								
DATE - 7/15/2011	REVISED -								

KE 7-18-2011

200 22ND Street, Suite 216, Lombard, IL 60148
630.705.0110 voice, 630.839.2566 fax
WWW.MPS-IL.COM

MILLENNIA PROFESSIONAL SERVICES

FILE NAME = P:\2009\ME090806_Var-Var_Plan\CADD\W022.US34.Sh-11.DWG
PLOT SCALE = 1"=50'
USER NAME = M.Larson

FED. ROAD DIST. NO. 1 [ILLINOIS] FED. AID PROJECT
P:\2009\ME090806_Var-Var_Plan\CADD\W022.US34.Sh-11.DWG

SUMMARY OF QUANTITIES				CONSTRUCTION TYPE CODE			
CODE NO.	ITEM DESCRIPTION	UNIT	URBAN TOTAL QUANTITY	ROADWAY	PED SIGNAL	SIDEWALK	TREE
				HSIP 90% FED 10% STATE 0005	50% STATE 25% COUNTY 25% CITY 0021	80% STATE 20% CITY 0021	REPLACEMENT 100% CITY 0031
20100110	TREE REMOVAL (6 TO 15 UNITS DIAMETER)	UNIT	27	-	-	-	27
20200100	EARTH EXCAVATION	CU YD	1010	1010	-	-	-
20201200	REMOVAL AND DISPOSAL OF UNSUITABLE MATERIAL	CU YD	490	490	-	-	-
20400800	FURNISHED EXCAVATION	CU YD	25	25	-	-	-
20800150	TRENCH BACKFILL	CU YD	231.6	231.6	-	-	-
* 21101615	TOPSOIL FURNISH AND PLACE, 4"	SQ YD	1065	1065	-	-	-
* 25200110	SODDING, SALT TOLERANT	SQ YD	1065	1065	-	-	-
28000400	PERIMETER EROSION BARRIER	FOOT	500	500	-	-	-
28000510	INLET FILTERS	EACH	30	30	-	-	-
35501327	HOT-MIX ASPHALT BASE COURSE, 10 3/4"	SQ YD	919	919	-	-	-
40600200	BITUMINOUS MATERIALS (PRIME COAT)	TON	0.79	0.79	-	-	-
40600300	AGGREGATE (PRIME COAT)	TON	3.94	3.94	-	-	-
40603090	HOT MIX ASPHALT BINDER COURSE, IL 19.0, N90	TON	544	544	-	-	-
40603595	POLYMERIZED HOT-MIX ASPHALT SURFACE COURSE, MIX "F", N90	TON	221	221	-	-	-
42001300	PROTECTIVE COAT	SQ YD	3435	3435	-	-	-
42400200	PORTLAND CEMENT CONCRETE SIDEWALK 5 INCH	SQ FT	2493	-	-	2493	-
42400800	DETECTABLE WARNINGS	SQ FT	48	-	-	48	-
44000157	HOT-MIX ASPHALT SURFACE REMOVAL, 2"	SQ YD	1068	1068	-	-	-
44000500	COMBINATION CURB AND GUTTER REMOVAL	FOOT	1205	1205	-	-	-
44003510	MEDIAN REMOVAL PARTIAL DEPTH	SQ FT	1850	1850	-	-	-
44201819	CLASS D PATCHES, TYPE III, 14 INCH	SQ YD	50	50	-	-	-
44201821	CLASS D PATCHES, TYPE IV, 14 INCH	SQ YD	194	194	-	-	-
44003100	MEDIAN REMOVAL	SQ FT	9570	9570	-	-	-
44000600	SIDEWALK REMOVAL	SQ FT	195	-	-	195	-
550A0050	STORM SEWERS, CLASS A, TYPE 1 12"	FOOT	21	21	-	-	-
550A0070	STORM SEWERS, CLASS A, TYPE 1 15"	FOOT	47	47	-	-	-
550A0160	STORM SEWERS, CLASS A, TYPE 1 36"	FOOT	252	252	-	-	-
550A4500	STORM SEWERS, CLASS A, TYPE 1 EQUIVALENT ROUND-SIZE 36"	FOOT	146	146	-	-	-
55100900	STORM SEWER REMOVAL 18"	FOOT	140	140	-	-	-
55101200	STORM SEWER REMOVAL 24"	FOOT	249	249	-	-	-
60255500	MANHOLES TO BE ADJUSTED	EACH	1	1	-	-	-
60200105	CATCH BASINS, TYPE A, 4'-DIAMETER, TYPE 1 FRAME, OPEN LID	EACH	1	1	-	-	-
60200205	CATCH BASINS, TYPE A, 4'-DIAMETER, TYPE 1 FRAME, CLOSED LID	EACH	1	1	-	-	-

SUMMARY OF QUANTITIES				CONSTRUCTION TYPE CODE			
CODE NO.	ITEM DESCRIPTION	UNIT	URBAN TOTAL QUANTITY	ROADWAY	PED SIGNAL	SIDEWALK	TREE
				HSIP 90% FED 10% STATE 0005	50% STATE 25% COUNTY 25% CITY 0021	80% STATE 20% CITY 0021	REPLACEMENT 100% CITY 0031
60206905	CATCH BASINS, TYPE C, TYPE 1 FRAME, OPEN LID	EACH	4	4	-	-	-
60208240	CATCH BASINS, TYPE C, TYPE 24 FRAME AND GRATE	EACH	2	2	-	-	-
60211800	CATCH BASINS, TYPE D, 4'-DIAMETER, TYPE 1 FRAME, CLOSED LID	EACH	2	2	-	-	-
60223800	MANHOLES, TYPE A, 6'-DIAMETER, TYPE 1FRAME, CLOSED LID	EACH	2	2	-	-	-
60236600	INLETS, TYPE A, TYPE 9 FRAME AND GRATE	EACH	2	2	-	-	-
60257900	MANHOLES TO BE RECONSTRUCTED	EACH	1	1	-	-	-
60300305	FRAMES AND LIDS TO BE ADJUSTED	EACH	2	2	-	-	-
60406100	FRAMES AND LIDS, TYPE 1, CLOSED LID	EACH	2	2	-	-	-
60605000	COMBINATION CONCRETE CURB AND GUTTER, TYPE B-6.24	FOOT	94	94	-	-	-
60619200	CONCRETE MEDIAN, TYPE SB-6.06	SQ FT	386	386	-	-	-
60619600	CONCRETE MEDIAN, TYPE SB-6.12	SQ FT	321	321	-	-	-
60624600	CORRUGATED MEDIAN	SQ FT	2910	2910	-	-	-
63700175	CONCRETE BARRIER, SINGLE FACE, 42 INCH HEIGHT	FOOT	166	166	-	-	-
* 66900200	NON-SPECIAL WASTE DISPOSAL	CU YD	5	5	-	-	-
* 66900450	SPECIAL WASTE PLANS AND REPORTS	L SUM	1	1	-	-	-
* 66900530	SOIL DISPOSAL ANALYSIS	EACH	1	1	-	-	-
67000400	ENGINEER'S FIELD OFFICE, TYPE A	CAL MO	6	6	-	-	-
67100100	MOBILIZATION	L SUM	1	1	-	-	-
70106800	CHANGEABLE MESSAGE SIGN	CAL MO	6	6	-	-	-
70300100	SHORT-TERM PAVEMENT MARKING	FOOT	530	530	-	-	-
70300210	TEMPORARY PAVEMENT MARKING - LETTERS AND SYMBOLS	SQ FT	36.4	36.4	-	-	-
70300220	TEMPORARY PAVEMENT MARKING - LINE 4"	FOOT	6630	6630	-	-	-
70300240	TEMPORARY PAVEMENT MARKING - LINE 6"	FOOT	350	350	-	-	-
70300520	PAVEMENT MARKING TAPE, TYPE III, 4"	FOOT	1000	1000	-	-	-
70301000	WORK ZONE PAVEMENT MARKING REMOVAL	SQ FT	88	88	-	-	-
* 78000100	THERMOPLASTIC PAVEMENT MARKING - LETTERS AND SYMBOLS	SQ FT	218.4	218.4	-	-	-
* 78000200	THERMOPLASTIC PAVEMENT MARKING - LINE 4"	FOOT	2125	2125	-	-	-
* 78000400	THERMOPLASTIC PAVEMENT MARKING - LINE 6"	FOOT	816	816	-	-	-
* 78000650	THERMOPLASTIC PAVEMENT MARKING - LINE 24"	FOOT	43	43	-	-	-
* 78100100	RAISED REFLECTIVE PAVEMENT MARKER	EACH	83	83	-	-	-
* 78300100	PAVEMENT MARKING REMOVAL	SQ FT	2065	2065	-	-	-
78300200	RAISED REFLECTIVE PAVEMENT MARKER REMOVAL	EACH	83	83	-	-	-

* SPECIALTY ITEM

FILE NAME : P:\2009\ME090806_VerVer_Phil\CADD\W022_US34\Shva\03-S00aht-ht-US34.dgn
 PLOT SCALE : 1:1000
 USER NAME : Millennium Professional Services



200 22ND Street, Suite 216, Lombard, IL 60148
 630.705.0110 voice, 630.839.2566 fax
 www.mps-ill.com
MILLENNIA PROFESSIONAL SERVICES

DESIGNED -	CJD	REVISED -	
DRAWN -	CJD	REVISED -	
CHECKED -	TVN	REVISED -	
DATE -	6/1/2011	REVISED -	

**STATE OF ILLINOIS
 DEPARTMENT OF TRANSPORTATION**

**US ROUTE 34
 AT NORTH AURORA ROAD /RAYMOND DRIVE**

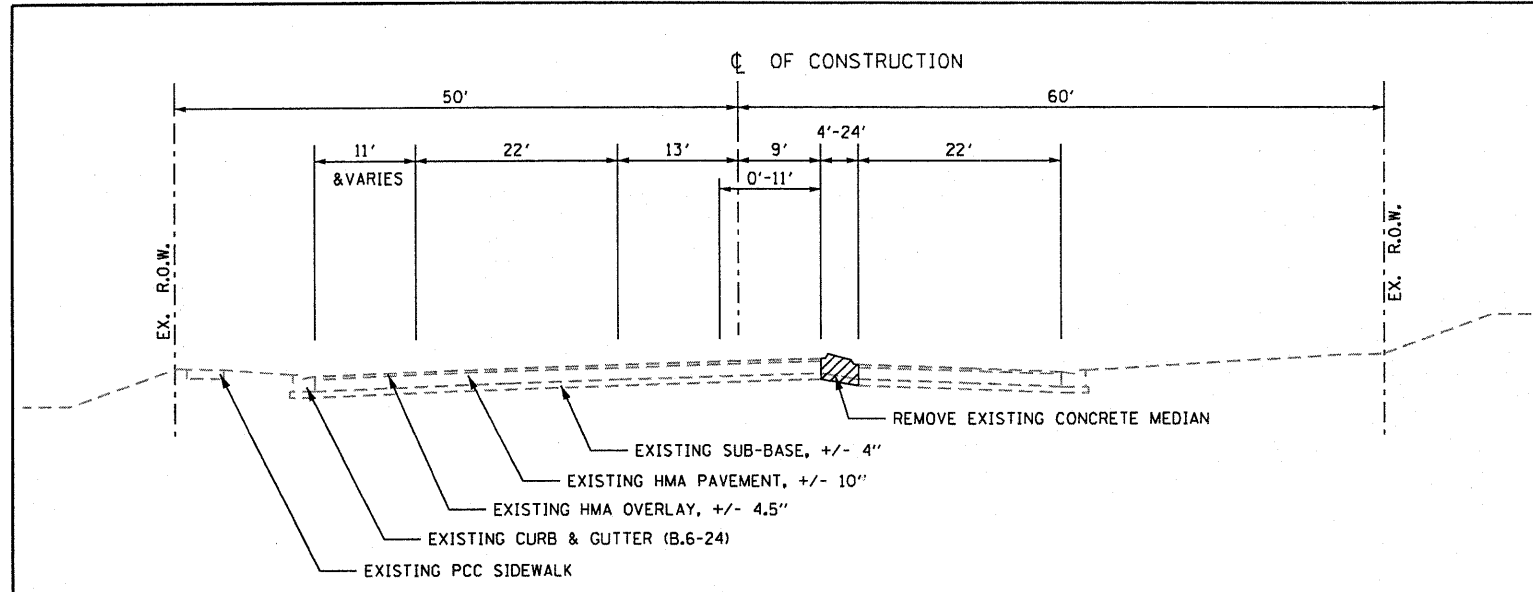
SUMMARY OF QUANTITIES

SCALE: NTS SHEET NO. 1 OF 2 SHEETS STA. TO STA.

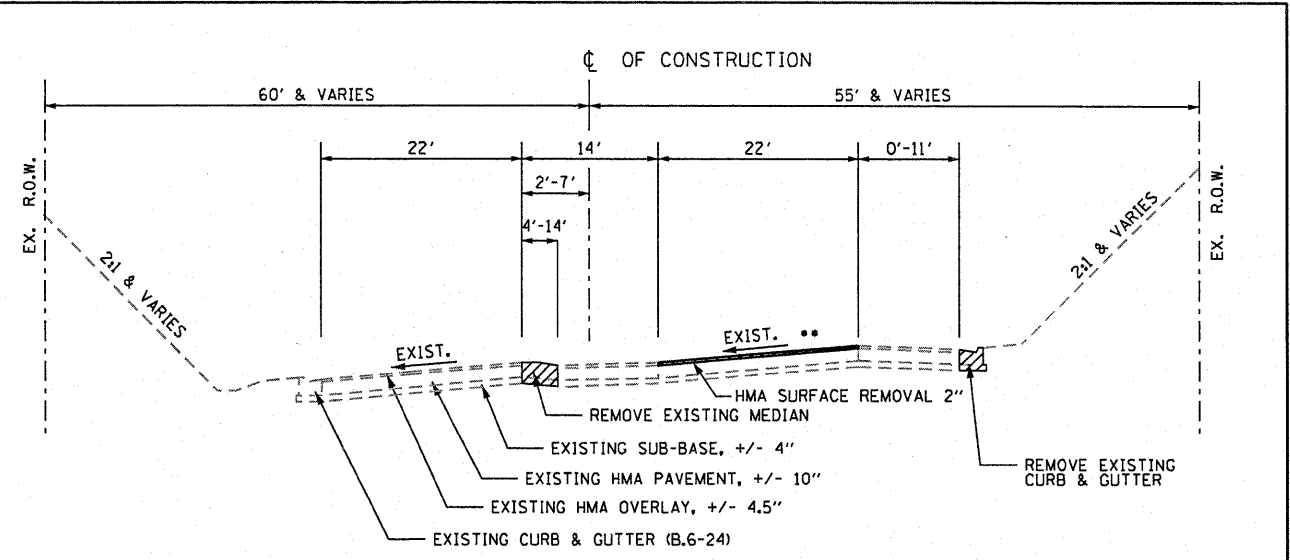
F.A.P. RTE.	SECTION	COUNTY	TOTAL SHEETS	SHEET NO.
311	652X-N-3	DUPAGE	34	3
CONTRACT NO. 60L22				
FED. ROAD DIST. NO. 1 ILLINOIS FED. AID PROJECT				

Rev. 7-19-11

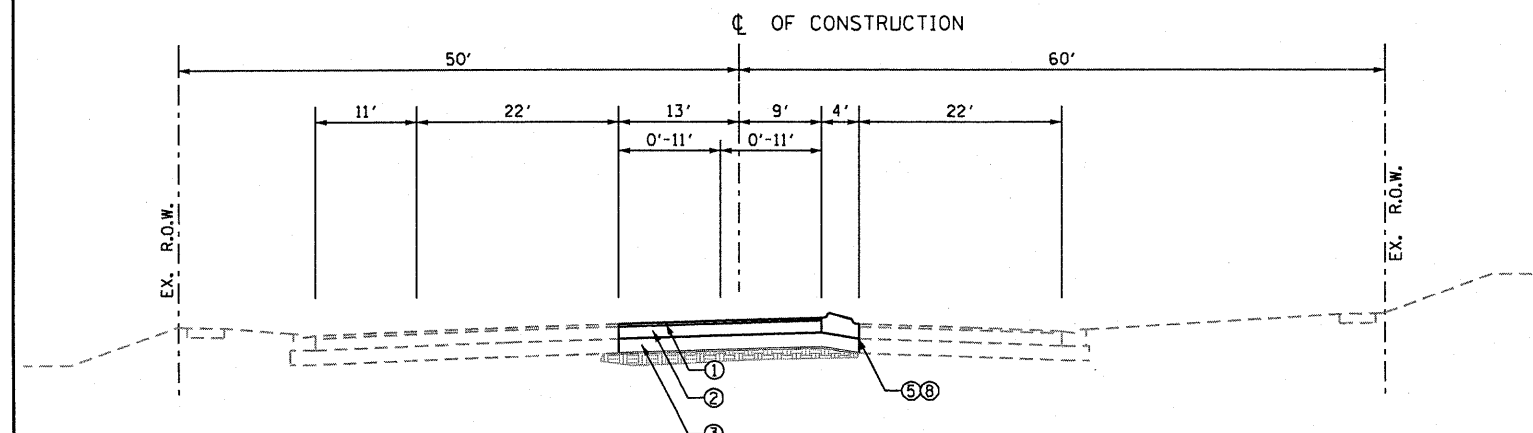
P:\2009\ME090806_VerVer_Phil\CADD\W022_US34\Shva\03-S00aht-ht-US34.dgn



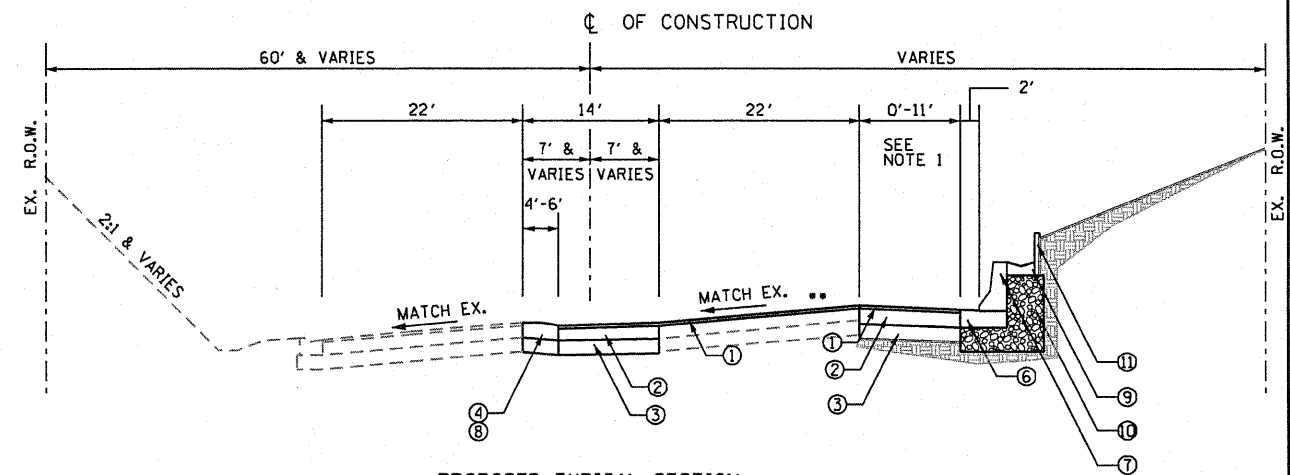
EXISTING TYPICAL SECTION
US ROUTE 34 (EAST LEG)
 STATION 114+32 TO STATION 118+94



EXISTING TYPICAL SECTION
US ROUTE 34 (SOUTH LEG)
 STATION 503+44 TO STATION 507+50



PROPOSED TYPICAL SECTION
US ROUTE 34 (EAST LEG)
 STATION 114+32 TO STATION 118+94



PROPOSED TYPICAL SECTION
US ROUTE 34 (SOUTH LEG)
 STATION 503+44 TO STATION 507+50
 ** RESURFACE LIMIT STA 501+80 TO 505+85

PROPOSED LEGEND

- ① 2" POLYMERIZED HMA SURFACE COURSE MIX F, N90
- ② 10 3/4" HMA BINDER COURSE, IL-19, N90 HMA BASE COURSE, 10 3/4"
- ③ 12" AGGREGATE SUBGRADE
- ④ CONCRETE MEDIAN, TYPE SB6.12
- ⑤ CONCRETE MEDIAN, TYPE SB6.06
- ⑥ CONCRETE BASE
- ⑦ 42" F SHAPED CONCRETE BARRIER
- ⑧ CONCRETE CORRUGATED MEDIAN
- ⑨ PAVED DITCH
- ⑩ GRANULAR BACK FILL
- ⑪ RETAINING WALL

NOTES

1. THE CONTRACTOR SHALL PERFORM THE PAVEMENT PATCHING OPERATIONS PRIOR TO THE HMA SURFACE REMOVAL OPERATION. SEE IDOT DISTRICT 1 DETAIL PAVEMENT PATCHING FOR HMA SURFACED PAVEMENT (BD-22) FOR ADDITIONAL INFORMATION.

HOT MIX ASPHALT MIXTURE REQUIREMENTS	
MIXTURE TYPE	AIR VOIDS @ Ndes
PAVEMENT RESURFACING	
HOT-MIX ASPHALT SURFACE COURSE, MIX "F", N90 (IL-9.5mm)	4% @ 90 GYR.
HOT-MIX ASPHALT BINDER COURSE, IL-19, N90	4% @ 90 GYR.
PATCHING	
CLASS D PATCHES (HMA BINDER IL-19 MM)	4% @ 70 GYR.
HMA REMOVAL OVER PATCHES (HMA BINDER IL-19MM)	4% @ 70 GYR.
BASE COURSE	
HMA BASE COURSE (HMA BINDER IL-19MM)	4% @ 90 GYR.

MIXTURE NOTES:

1. THE UNIT WEIGHT USED TO CALCULATE ALL HOT-MIX ASPHALT SURFACE MIXTURES IS 112 LBS/SQ YD/IN
2. THE "AC TYPE" FOR POLYMERIZED HMA MIXES SHALL BE "SBS/SBR PG70-22" AND FOR NON-POLYMERIZED HMA THE "AC TYPE" SHALL BE "PG 64-22" UNLESS MODIFIED BY DISTRICT ONE SPECIAL PROVISIONS. FOR "PERCENT OF RAP" SEE DISTRICT ONE SPECIAL PROVISIONS.

FILE NAME: F:\2009\ME09006.Ver\Ver-Phil\CADD\W022.US34\Shs\04-01600.22-tp.dgn
 USER: NAME: Millennium Professional Services

KE 7-18-2011

200 22ND Street, Suite 216, Lombard, IL 60148
 630.785.0110 voice, 630.839.2566 fax
 www.mps-ill.com

MILLENNIA PROFESSIONAL SERVICES

DESIGNED - CJD	REVISED -
DRAWN - CJD	REVISED -
CHECKED - TVN	REVISED -
DATE - 6/20/2011	REVISED -

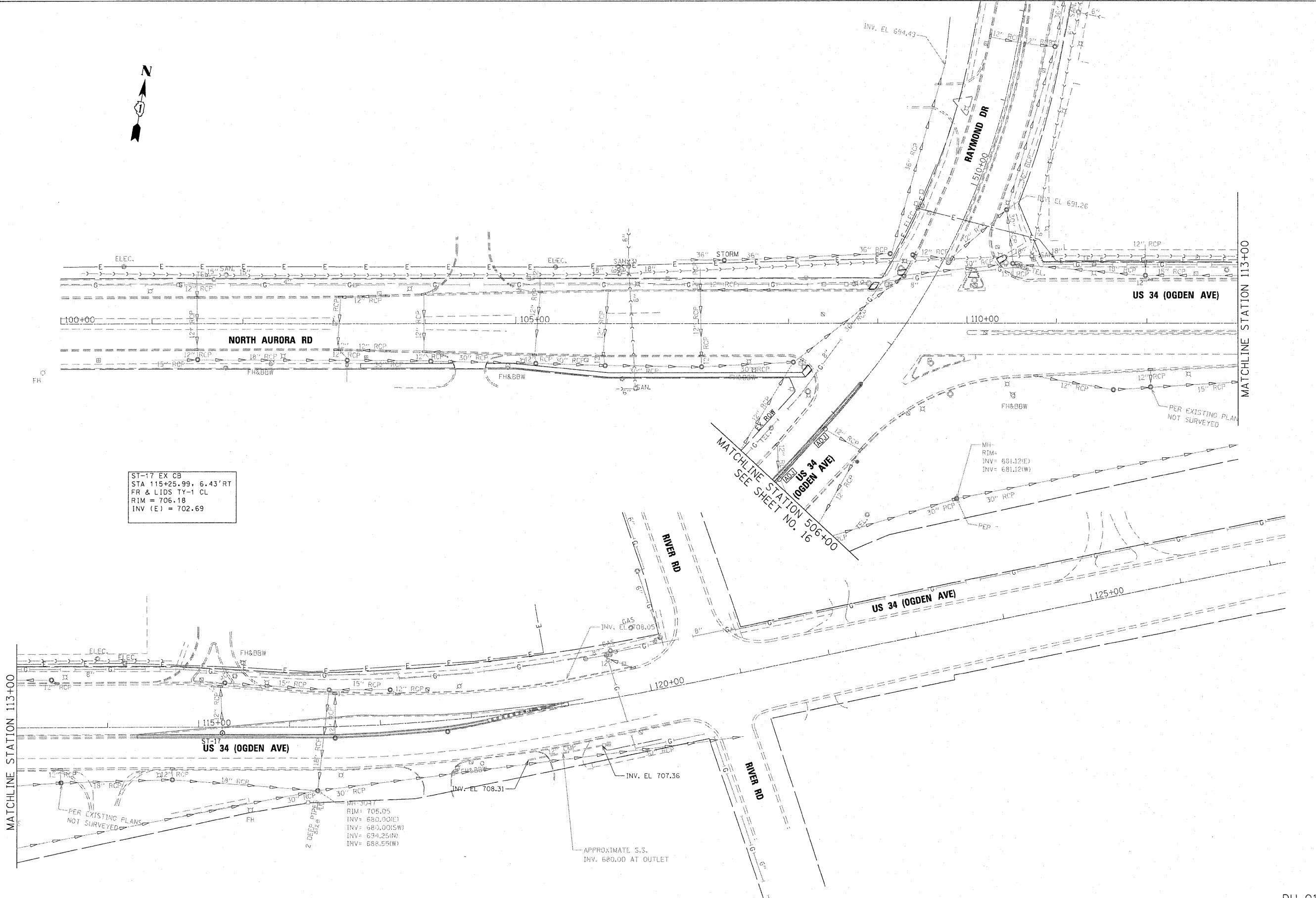
STATE OF ILLINOIS
DEPARTMENT OF TRANSPORTATION

US ROUTE 34
AT NORTH AURORA ROAD /RAYMOND DRIVE

TYPICAL SECTIONS

F.A.P. RTE. 311	SECTION 652X-N-3	COUNTY DUPAGE	TOTAL SHEETS NO. 34
			5
CONTRACT NO. 60L22			
SCALE: N/A	SHEET NO. 1 OF 1 SHEETS	STA. TO STA.	FED. ROAD DIST. NO. 1 ILLINOIS FED. AID PROJECT

F:\2009\ME09006.Ver\Ver-Phil\CADD\W022.US34\Shs\04-01600.22-tp.dgn



ST-17 EX CB
 STA 115+25.99, 6.43' RT
 FR & LIDS TY-1 CL
 RIM = 706.18
 INV (E) = 702.69

MATCHLINE STATION 113+00


MATCHLINE STATION 113+00

MATCHLINE STATION 506+00
 SEE SHEET NO. 16

KE 7-18-2011

DU-01

FILE NAME = P:\2009\VE\0806_Ver_Ver_P\I\CADD\W022_US34\Shu\0160L22-DU01.dgn
 USER NAME = Millennium Professional Services



200 22ND Street, Suite 216, Lombard, IL 60148
 630.785.0110 voice, 630.839.2566 fax
 www.mps-ill.com
MILLENNIA PROFESSIONAL SERVICES

DESIGNED - CJD	REVISED -
DRAWN - CJD	REVISED -
CHECKED - TVN	REVISED -
DATE - 7/15/2011	REVISED -

STATE OF ILLINOIS
DEPARTMENT OF TRANSPORTATION

US ROUTE 34
AT NORTH AURORA ROAD /RAYMOND DRIVE
DRAINAGE AND UTILITIES PLAN

SCALE: 1"=50' SHEET NO. 1 OF 2 SHEETS STA. 100+00 TO STA. 121+00

F.A.P. RTE. 311	SECTION 652X-N-3	COUNTY DUPAGE	TOTAL SHEETS 34	SHEET NO. 15
CONTRACT NO. 60L22				
FED. ROAD DIST. NO. 1 ILLINOIS FED. AID PROJECT				

P:\2009\VE\0806_Ver_Ver_P\I\CADD\W022_US34\Shu\0160L22-DU01.dgn