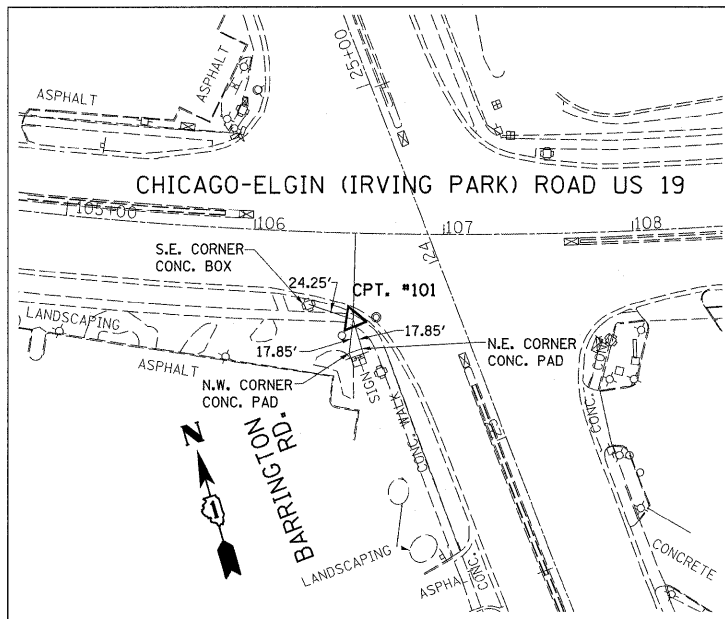


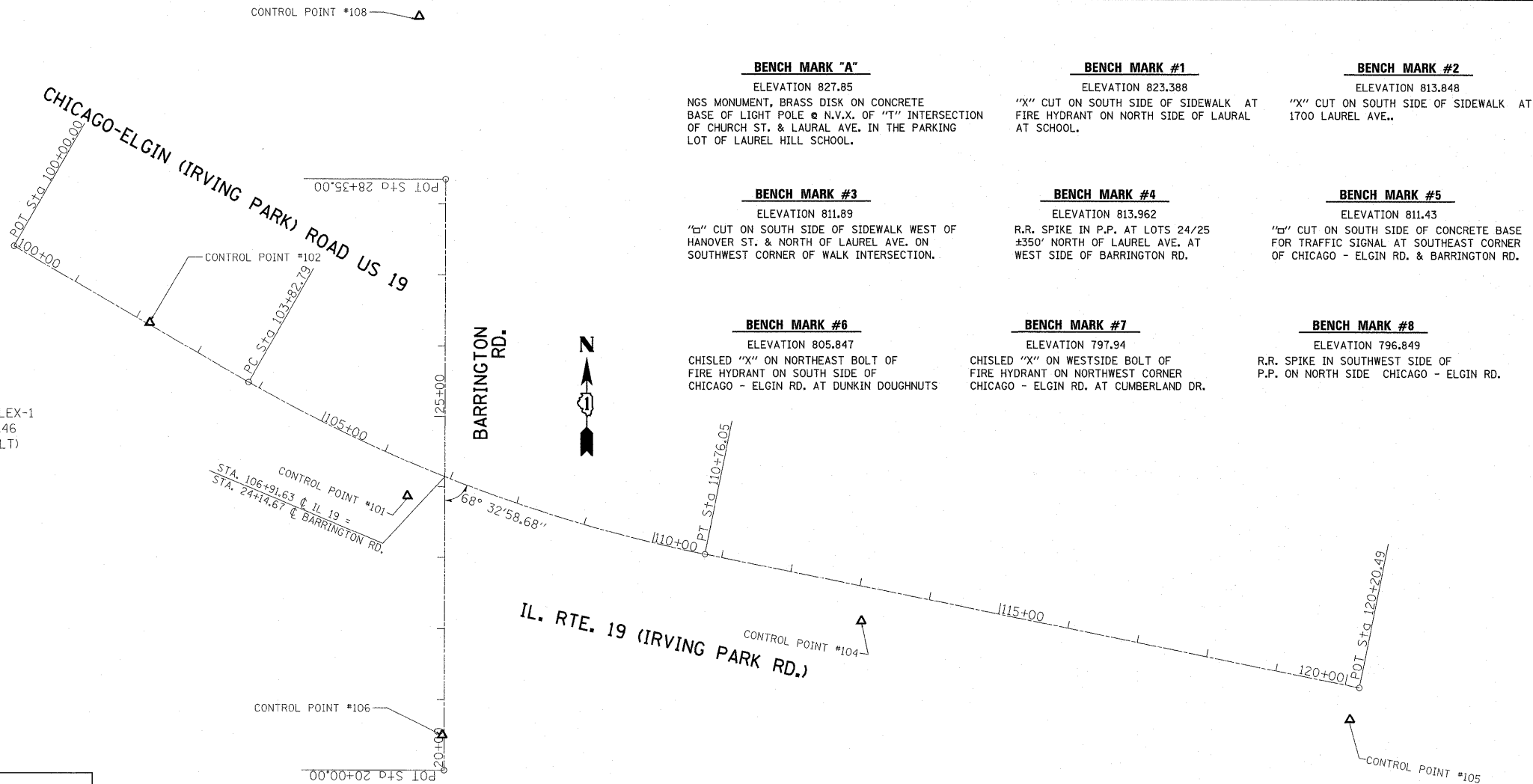
ALIGNMENT COORDINATES - IL. RTE. 19 (IRVING PARK RD.)			
IL. 19	STATION	N	S
POB	100+00.00	1944935.8776	1034906.3428
PC	103+82.79	1944744.9341	1035238.1036
PI	107+32.46	1944570.5089	1035541.1641
PT	110+76.05	1944501.1723	1035883.8819
POT	120+20.49	1944313.8988	1036809.578

ALIGNMENT COORDINATES - BARRINGTON RD.			
IL. 19	STATION	N	S
POB	20+00.00	2147459.4803	2148536.1927
POT	28+35.00	2148294.4782	2148538.0198

EXIST. CURVE 19CLEX-1  
 PI STA. = 107+32.46  
 $\Delta = 18^\circ 29' 07''$  (LT)  
 $D = 2^\circ 39' 59''$   
 $R = 2,148.79'$   
 $T = 349.67'$   
 $L = 693.27'$   
 $E = 28.26'$   
 $e = \text{-----}$   
 $T.R. = \text{-----}$   
 $S.E. RUN = \text{-----}$



**CONTROL POINT #101**  
 CUT CROSS ON WALK  
 STATION 106+53.25, 45.68' RT.  
 NORTH: 1,944,582.9501  
 EAST: 1,035,462.7882  
 ELEV=811.095  
 CUT CROSS ON WALK



- BENCH MARK "A"**  
ELEVATION 827.85  
NGS MONUMENT, BRASS DISK ON CONCRETE BASE OF LIGHT POLE @ N.V.X. OF "T" INTERSECTION OF CHURCH ST. & LAURAL AVE. IN THE PARKING LOT OF LAUREL HILL SCHOOL.
- BENCH MARK #1**  
ELEVATION 823.388  
"X" CUT ON SOUTH SIDE OF SIDEWALK AT FIRE HYDRANT ON NORTH SIDE OF LAURAL AT SCHOOL.
- BENCH MARK #2**  
ELEVATION 813.848  
"X" CUT ON SOUTH SIDE OF SIDEWALK AT 1700 LAUREL AVE..
- BENCH MARK #3**  
ELEVATION 811.89  
"C" CUT ON SOUTH SIDE OF SIDEWALK WEST OF HANOVER ST. & NORTH OF LAUREL AVE. ON SOUTHWEST CORNER OF WALK INTERSECTION.
- BENCH MARK #4**  
ELEVATION 813.962  
R.R. SPIKE IN P.P. AT LOTS 24/25 ±350' NORTH OF LAUREL AVE. AT WEST SIDE OF BARRINGTON RD.
- BENCH MARK #5**  
ELEVATION 811.43  
"C" CUT ON SOUTH SIDE OF CONCRETE BASE FOR TRAFFIC SIGNAL AT SOUTHEAST CORNER OF CHICAGO - ELGIN RD. & BARRINGTON RD.
- BENCH MARK #6**  
ELEVATION 805.847  
CHISLED "X" ON NORTHEAST BOLT OF FIRE HYDRANT ON SOUTH SIDE OF CHICAGO - ELGIN RD. AT DUNKIN DOUGHNUTS
- BENCH MARK #7**  
ELEVATION 797.94  
CHISLED "X" ON WESTSIDE BOLT OF FIRE HYDRANT ON NORTHWEST CORNER CHICAGO - ELGIN RD. AT CUMBERLAND DR.
- BENCH MARK #8**  
ELEVATION 796.849  
R.R. SPIKE IN SOUTHWEST SIDE OF P.P. ON NORTH SIDE CHICAGO - ELGIN RD.

- BENCH MARK "B"**  
ELEVATION 827.85  
NGS MONUMENT, BRASS DISK ON STEEL ROD APPROXIMATELY 0.5 MILES EAST OF INTERSECTION OF BARRINGTON RD. AND IRVING PARK RD. ON NORTH SIDE OF IRVING PARK RD.
- BENCH MARK #9**  
ELEVATION 809.685  
"C" CUT ON SOUTHEAST CORNER OF TRAFFIC CONTROL BOX ON SOUTHWEST CORNER OF JIFFY LUBE PROPERTY.
- BENCH MARK #10**  
ELEVATION 812.606  
CHISLED "X" CUT ON NORTHEAST BOLT OF FIRE HYDRANT ON NORTH SIDE OF CHICAGO - ELGIN RD. AT BURGER KING.
- BENCH MARK #11**  
ELEVATION 807.36  
"C" CUT ON TOP OF CURB ±13' NORTH OF A FIRE HYDRANT, EAST SIDE OF SIDEWALK AT NORTHWEST CORNER OF BARRINGTON RD. & CHICAGO - ELGIN RD.
- BENCH MARK #12**  
ELEVATION 798.432  
"C" CUT ON TOP OF CURB ON NORTH SIDE OF AN ISLAND FOR AN ENTRANCE ON WEST SIDE OF BARRINGTON RD. AT DUNKIN DOUGHNUTS.
- BENCH MARK #13**  
ELEVATION 800.42  
"X" CUT ON WEST BOLT OF A FIRE HYDRANT ON WEST SIDE OF BARRINGTON RD. ACROSS FROM AMERICAN MATTRESS.