




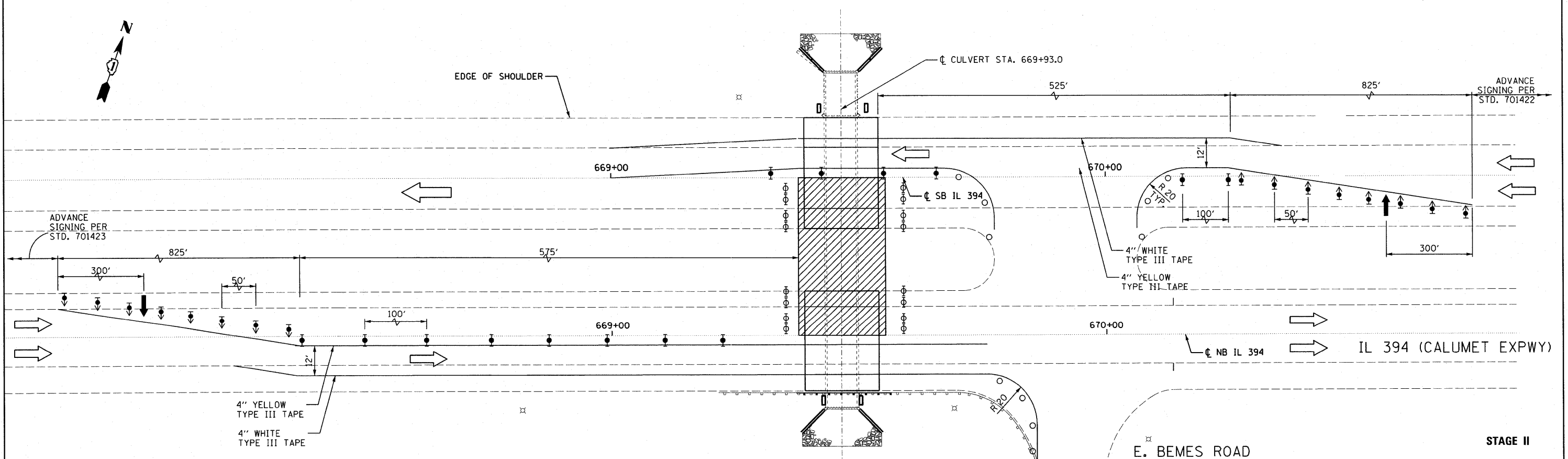
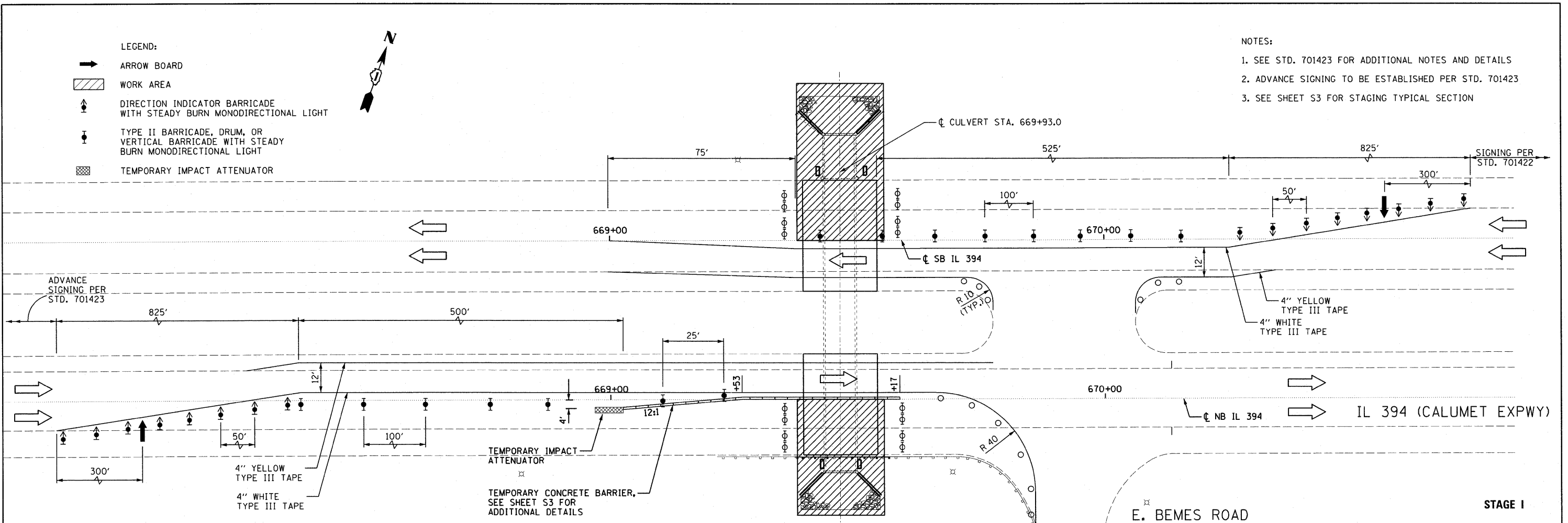


LEGEND:

-  ARROW BOARD
-  WORK AREA
-  DIRECTION INDICATOR BARRICADE WITH STEADY BURN MONODIRECTIONAL LIGHT
-  TYPE II BARRICADE, DRUM, OR VERTICAL BARRICADE WITH STEADY BURN MONODIRECTIONAL LIGHT
-  TEMPORARY IMPACT ATTENUATOR

NOTES:

1. SEE STD. 701423 FOR ADDITIONAL NOTES AND DETAILS
2. ADVANCE SIGNING TO BE ESTABLISHED PER STD. 701423
3. SEE SHEET S3 FOR STAGING TYPICAL SECTION



FILE NAME =	USER NAME = #USER#	DESIGNED - JMS	REVISED -	<b>STATE OF ILLINOIS DEPARTMENT OF TRANSPORTATION</b>	<b>IL ROUTE 394 MAINTENANCE OF TRAFFIC</b>			F.A.P. RTE. 332	SECTION 2010-067-T	COUNTY WILL	TOTAL SHEETS 15	SHEET NO. 5
PLOT SCALE = #SCALE#	CHECKED - JMH	REVISED -	REVISED -		SCALE:	SHEET NO.	OF SHEETS	STA.	TO STA.	CONTRACT NO. 60L49		
PLOT DATE = #DATE#	DATE - JUNE 2011	REVISED -	REVISED -		ILLINOIS FED. AID PROJECT							