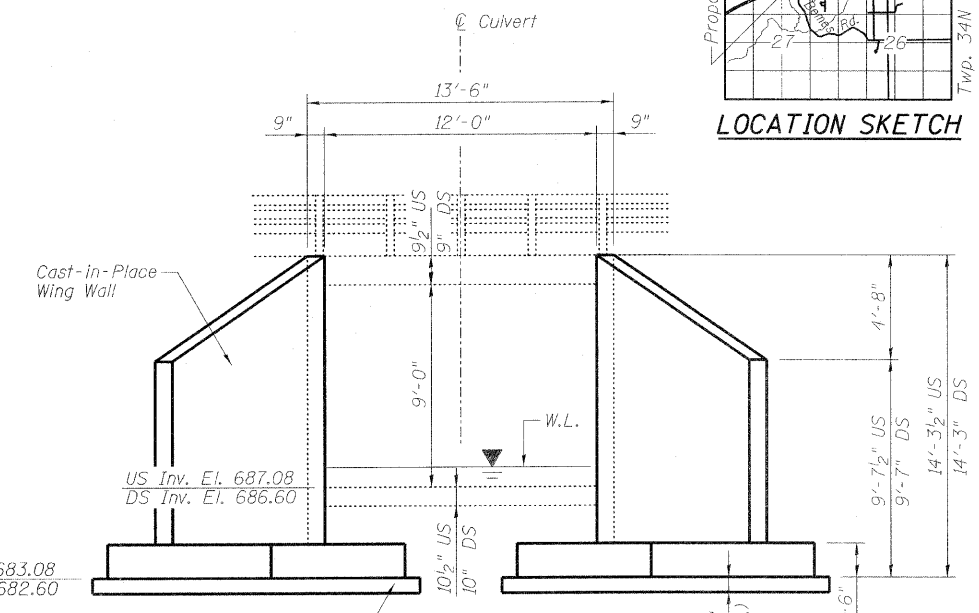
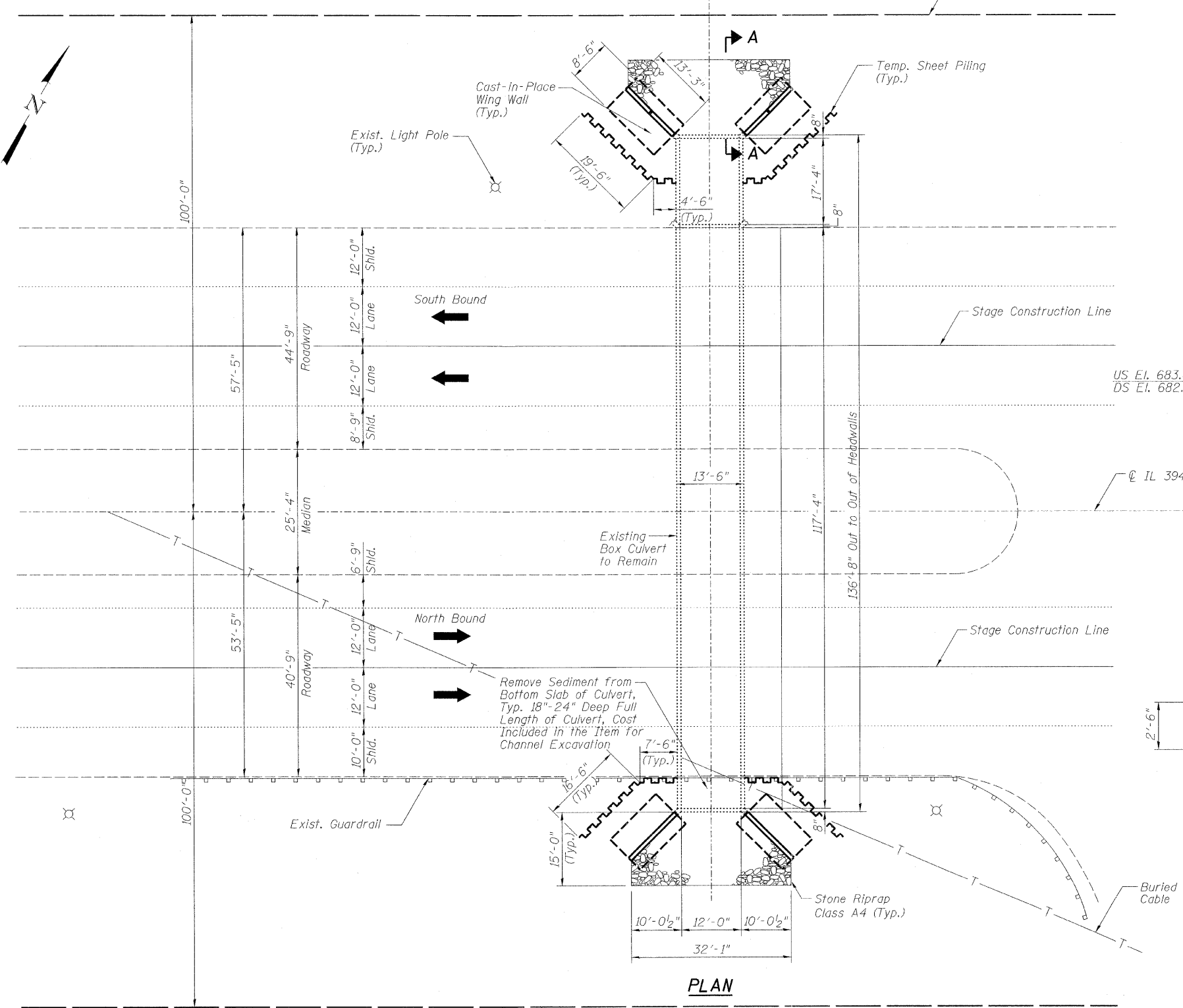
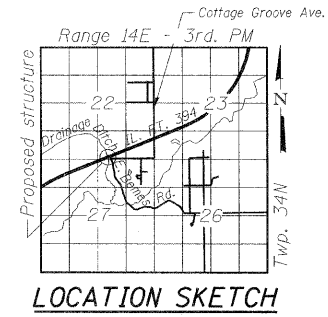


Bench Mark: Square cut in southwest end of headwall, 62' left of Sta. 669+87, elevation 696.88'.

Existing Structure: SN 099-0517 was built in 1952 and extended in 1968. The structure consists of a cast-in-place box culvert with cast-in-place wing walls. Staged construction will be utilized as shown.

No Salvage.



ELEVATION

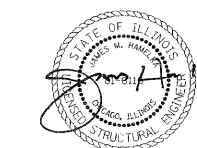
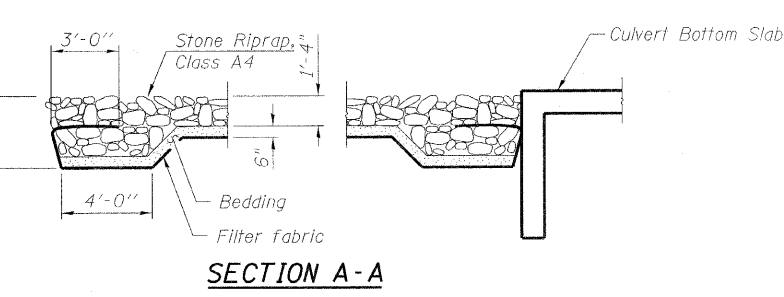
4" Thick Concrete "Mud Coat" Over Entire Footing Excavation Area, The Concrete Shall be in Accordance With Section 1020 of the Standard Specifications and Shall be Class S1 Concrete, The "Mud Coat" Shall be Poured After the Engineer has Approved the Excavation and Soil Strength, Paid as "Concrete Structure" (Typ.)

DESIGN SPECIFICATIONS
2002 AASHTO Standard Specifications for Highway Bridges (17th Edition)

LOADING HS20-44

DESIGN STRESSES

FIELD UNITS
 $f'_c = 3,500$ psi
 $f_y = 60,000$ psi (reinforcement)



COLLINS ENGINEERS, INC.
 JAMES M. HAMELKA
 NO. 81-6116
 EXPIRES 11-30-2012

GENERAL PLAN AND ELEVATION
IL. RT. 394 OVER DRAINAGE DITCH
F.A.P. RT. 332 - SEC. 2010-067-T
WILL COUNTY
STATION 669+93.0
STRUCTURE NO. 099-0517

FILE NAME =	USER NAME =	DESIGNED - JMS	REVIS	STATE OF ILLINOIS DEPARTMENT OF TRANSPORTATION	GENERAL PLAN AND ELEVATION STRUCTURE NO. 099-0517	F.A.P. RTE.	SECTION	COUNTY	TOTAL SHEETS	SHEET NO.
PLOT SCALE =	CHECKED - JMS	REVIS	332			2010-067-T	WILL	15	7	
PLOT DATE =	DRAWN - DR	REVIS	CONTRACT NO. 60L49							
	CHECKED - JMH	REVIS	ILLINOIS FED. AID PROJECT							