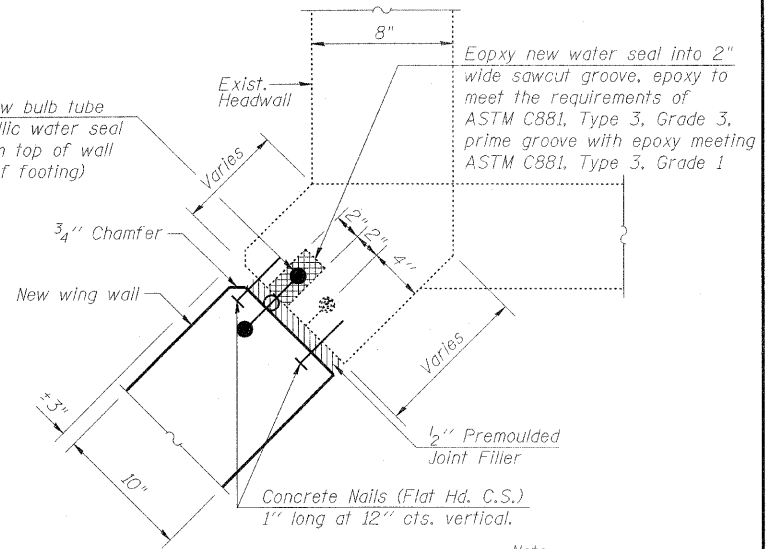


REINF.-BACK FACE

ELEVATION

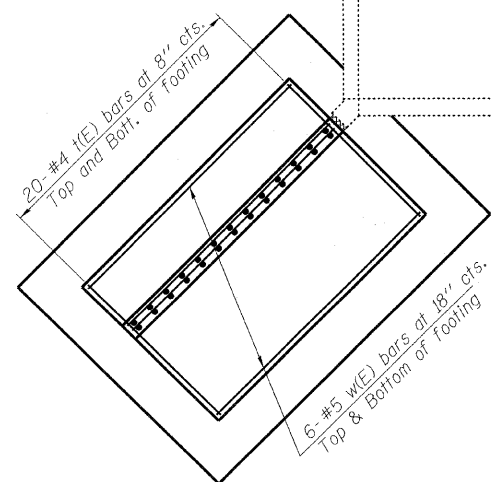
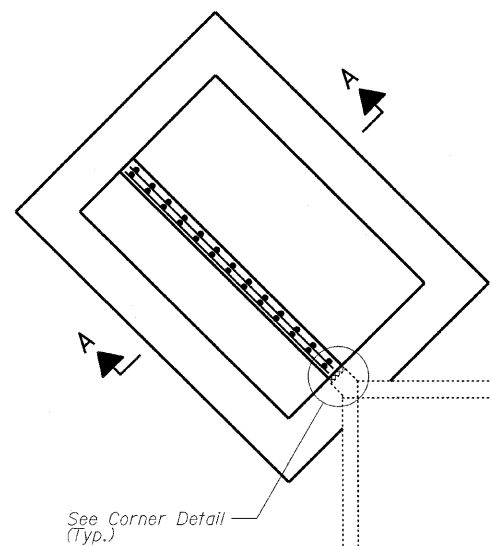
REINF.-FRONT FACE

Buried IBT Cable at D/S Wing Wall Elevation Unknown

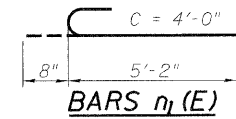
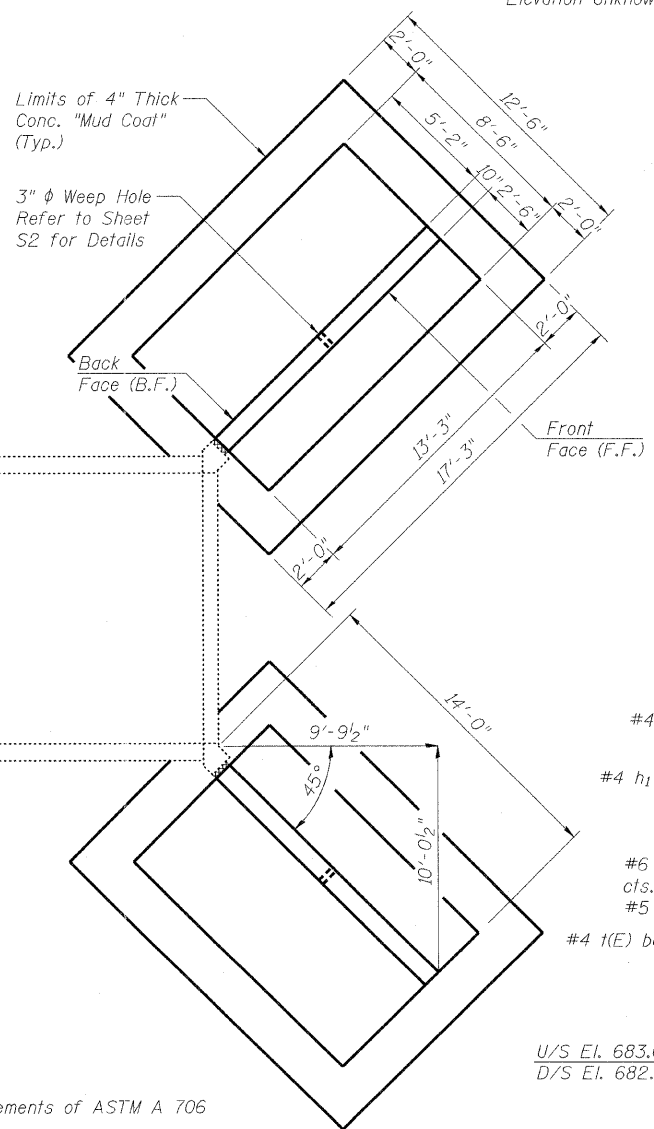


CORNER DETAIL

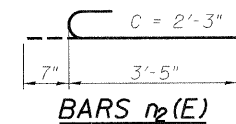
Note: Cost for all labor and materials associated with the Corner Detail shall be included in the pay item for Concrete Structure.



PLAN



BARS n1(E)



BARS n2(E)

DESIGN STRESSES

fy = 60,000 psi
f'c = 3,500 psi

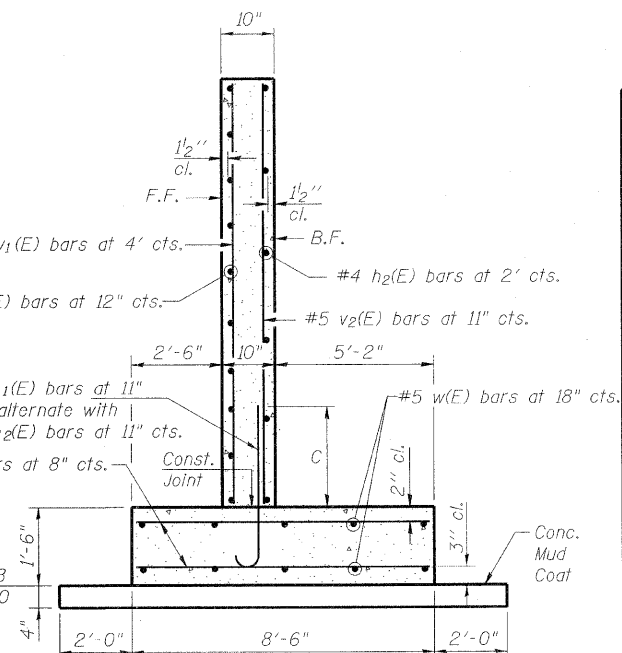
Max. Soil Pressure under footing = 2,867 psf

BILL OF MATERIAL

Bar	No.	Size	Length	Shape
h1(E)	36	#4	13'-0"	—
h2(E)	16	#4	13'-0"	—
h3(E)	20	#4	14'-6"	—
h4(E)	12	#4	14'-6"	—
n1(E)	60	#6	5'-10"	U
n2(E)	56	#5	4'-0"	U
t(E)	160	#4	8'-2"	—
v1(E)	16	#4	12'-6"	—
v2(E)	60	#5	12'-6"	—
w(E)	48	#5	13'-0"	—
Concrete Structure			Cu. Yd.	42.1
Reinforcement Bars, Epoxy Coated			Pound	3,970

MINIMUM BAR LAPS

#4 Bar = 2'-7"
#5 Bar = 3'-3"
#6 Bar = 3'-10"



SECTION A-A

Max. soil pressure at toe: 2,867 psf

NOTES:

1. Reinforcement bars shall conform to the requirements of ASTM A 706 Gr 60. See Special Provisions.
2. All reinforcement bars shall be epoxy coated.
3. All wing wall dimensions shown are typical u.n.o.

FILE NAME =	USER NAME =	DESIGNED - JMS	REVISED -
		CHECKED - JMS	REVISED -
	PLOT SCALE =	DRAWN - DR	REVISED -
	PLOT DATE =	CHECKED - JMH	REVISED -

STATE OF ILLINOIS
DEPARTMENT OF TRANSPORTATION

WING WALL DETAILS
STRUCTURE NO. 099-0517
SHEET NO. 55 OF 56 SHEETS

F.A.P. RTE.	SECTION	COUNTY	TOTAL SHEETS	SHEET NO.
332	2010-067-T	WILL	15	11
			CONTRACT NO. 60L49	
ILLINOIS FED. AID PROJECT				