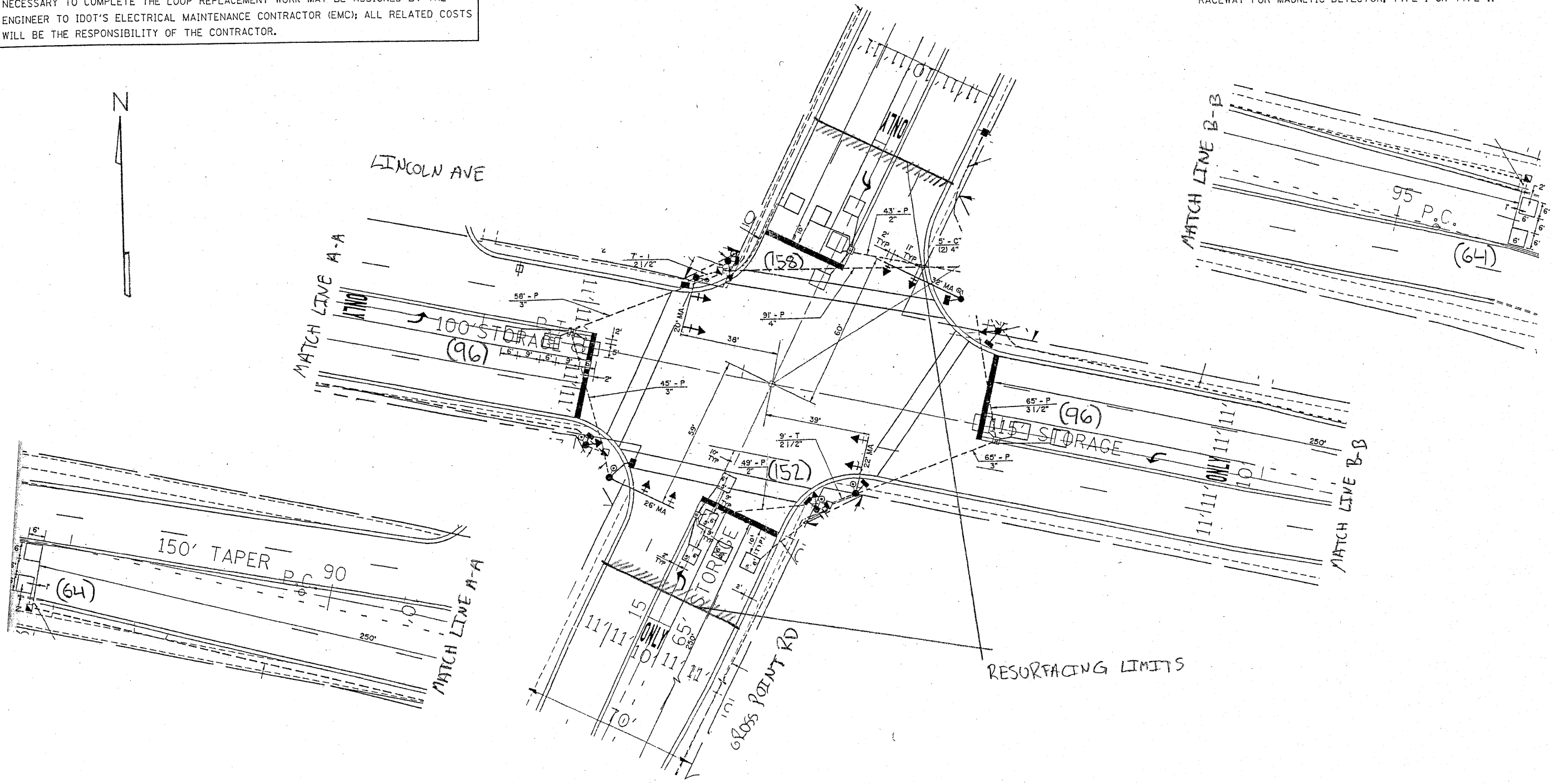


WORK SHALL MEET THE REQUIREMENTS OF THE SPECIAL PROVISION, "TRAFFIC SIGNAL SPECIFICATIONS FOR DETECTOR LOOP REPLACEMENT AND/OR INSTALLATION ON ROADWAY GRINDING, RESURFACING AND PATCHING OPERATIONS". SPECIAL ATTENTION MUST BE MADE TO THE SECTIONS "INSPECTION OF CONSTRUCTION" AND "DETECTOR LOOP REPLACEMENT" FOR INSTALLATION AND INSPECTION REQUIREMENTS. LOOP REPLACEMENT WORK THAT DOES NOT MEET THE CONTRACT REQUIREMENTS SHALL NOT BE PAID. WORK NECESSARY TO COMPLETE THE LOOP REPLACEMENT WORK MAY BE ASSIGNED BY THE ENGINEER TO IDOT'S ELECTRICAL MAINTENANCE CONTRACTOR (EMC); ALL RELATED COSTS WILL BE THE RESPONSIBILITY OF THE CONTRACTOR.

TRAFFIC SIGNAL LEGEND

PROPOSED	EXISTING
SIGNAL HEAD WITH BACKPLATE	
SIGNAL HEAD	
GALVANIZED STEEL CONDUIT IN TRENCH OR PUSHED	
DETECTOR LOOP	
VEHICLE DETECTOR, NON COMPENSATED MAGNETIC TYPE	
RACEWAY FOR MAGNETIC DETECTOR, TYPE I OR TYPE II	



THIS PLAN IS FOR THE SOLE PURPOSE OF DETECTOR LOOP REPLACEMENTS ONLY

REPLACE ALL DETECTOR LOOPS AS SHOWN (WITHIN THE RESURFACING LIMITS)

CODE	QUANTITY	UNIT	ITEM
86600600	630	FOOT	DETECTOR LOOP, REPLACEMENT

**STATE OF ILLINOIS
DEPARTMENT OF TRANSPORTATION**

**DISTRICT ONE - DETECTOR LOOP REPLACEMENT
LINCOLN AVE. AT GROSS POINT RD.**

F.A.W. RTE.	SECTION	COUNTY	TOTAL SHEETS	SHEET NO.
1328	0505.1-RS-2	COOK	17	6

CONTRACT NO. 60M19

FILE NAME *	USER NAME =	DESIGNED -	REVISED -
cr:\pr_work\psidot\nguyensm\0112618\F1001.dgn	nguyensm	DRAWN -	REVISED -
		CHECKED -	REVISED -
		DATE -	REVISED -

PLOT SCALE = 100.0000 / IN.
PLOT DATE = 11/19/2010