

OR RTE.	SECTION	COUNTY	TOTAL SHEETS	SHEET NO.
15	2010-104-RS	COOK	18	1
		ILLINOIS	CONTRACT NO. 60M28	

STATE OF ILLINOIS  
DEPARTMENT OF TRANSPORTATION  
DIVISION OF HIGHWAYS  
**PROPOSED  
HIGHWAY PLANS**

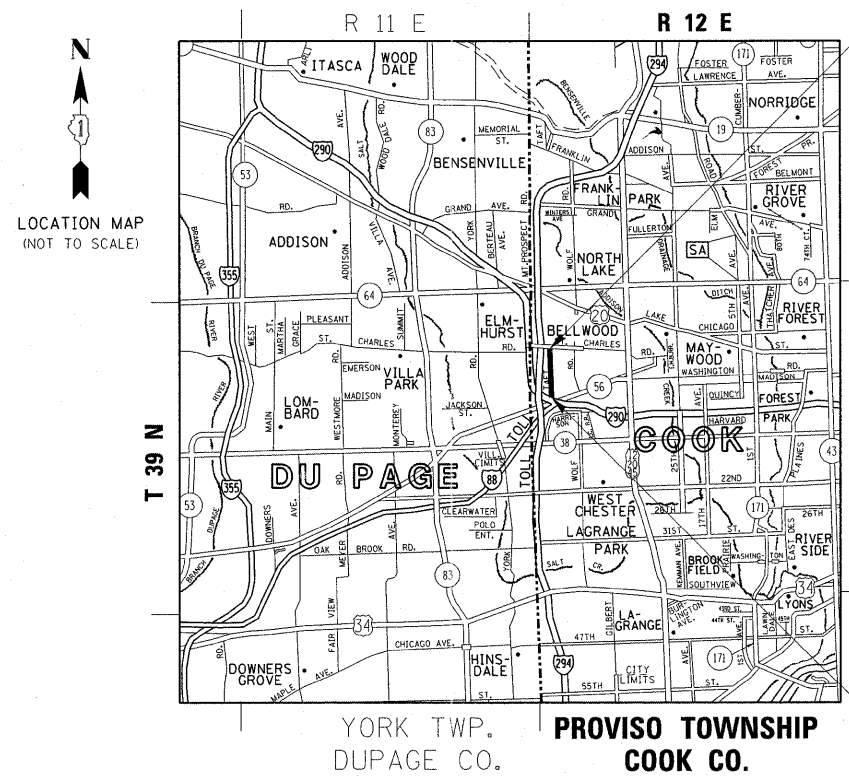
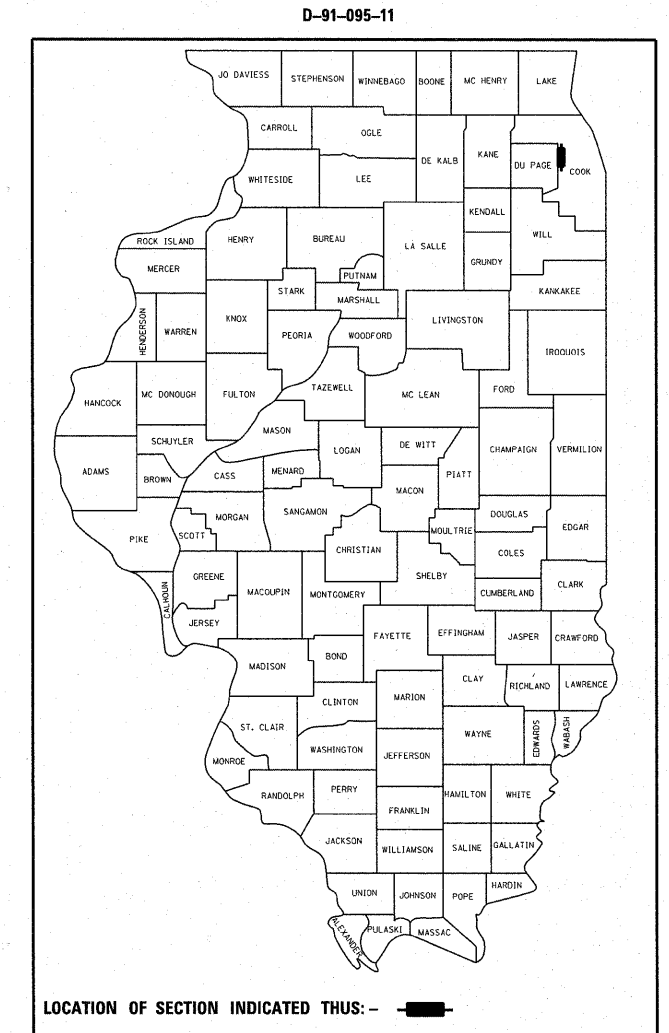
OR 15: TAFT AVE.  
ST. CHARLES RD. TO ILL 56 (BUTTERFIELD RD.)  
SECTION: 2010-104-RS  
RESURFACING (3P)

FOR INDEX OF SHEETS, SEE SHEET NO. 2

THIS PROJECT IS LOCATED IN  
VILLAGE OF BERKELEY AND VILLAGE OF HILLSIDE

**COOK COUNTY**

C-91-095-11

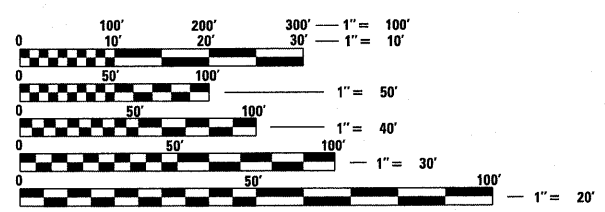


**PROJECT ENDS  
STA 62 + 40.2**

**TRAFFIC DATA:  
1982 ADT = 9200  
SPEED LIMIT = 30 MPH**

**PROJECT BEGINS  
STA 10 + 82.7**

GROSS AND NET LENGTH = 5,158 FT. = 0.98 MILES



FULL SIZE PLANS HAVE BEEN PREPARED USING STANDARD ENGINEERING SCALES. REDUCED SIZED PLANS WILL NOT CONFORM TO STANDARD SCALES. IN MAKING MEASUREMENTS ON REDUCED PLANS, THE ABOVE SCALES MAY BE USED.

J.U.L.I.E.  
JOINT UTILITY LOCATION INFORMATION FOR EXCAVATION  
1-800-892-0123  
OR 811

**PROJECT ENGINEER: DAN WILGREEN / (847) 705-4240**  
**PROJECT MANAGER: KEN ENG / (847)-705-4247**

**CONTRACT NO. 60M28**

STATE OF ILLINOIS  
DEPARTMENT OF TRANSPORTATION  
DIVISION OF HIGHWAYS

SUBMITTED MAY 10, 20 11

*Diana M. O'Keefe*  
DEPUTY DIRECTOR OF HIGHWAYS, REGION ENGINEER

July 1 20 11  
*Scott E. Stiff P.E.*  
Acting ENGINEER OF DESIGN AND ENVIRONMENT

July 1 20 11  
*Christina M. Reed*  
DIRECTOR OF HIGHWAYS, CHIEF ENGINEER

**PRINTED BY THE AUTHORITY  
OF THE STATE OF ILLINOIS**