

F.A.U. RTE.	SECTION	COUNTY	TOTAL SHEETS	SHEET NO.
2612	2010-108-RS	COOK	18	1
FED. ROAD DIST. NO.	ILLINOIS	CONTRACT NO. 60M35		

STATE OF ILLINOIS
DEPARTMENT OF TRANSPORTATION
DIVISION OF HIGHWAYS

**PROPOSED
HIGHWAY PLANS**

FAU 2612 (STATE STREET)
127TH ST. TO WILL COUNTY LINE
SECTION: 2010-108-RS
RESURFACING

COOK COUNTY
C-91-102-11

D -91-102-11

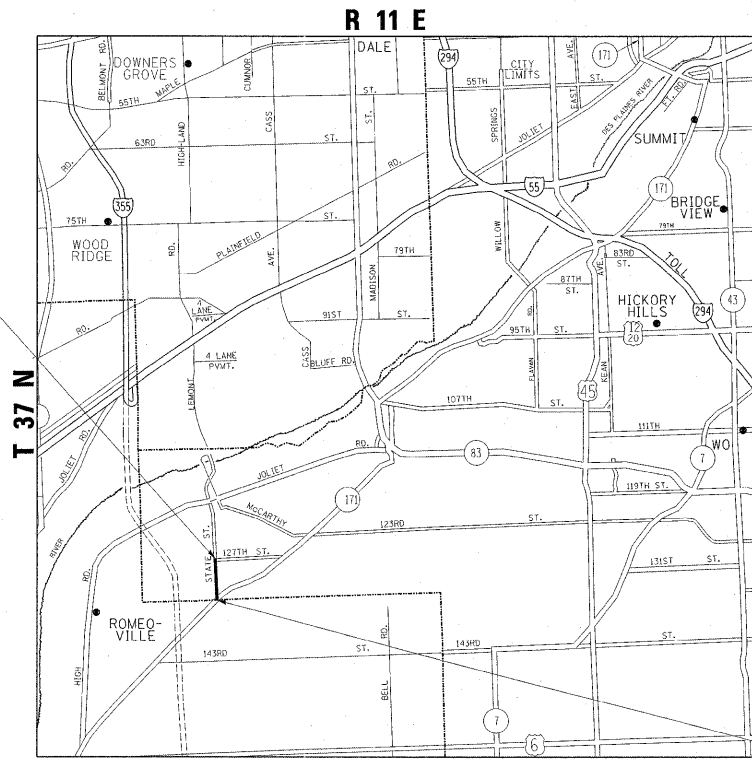


LOCATION OF SECTION INDICATED THUS: - [black rectangle] -

FOR INDEX OF SHEETS, SEE SHEET NO. 2

THE PROJECT IS LOCATED IN THE VILLAGE OF LEMONT

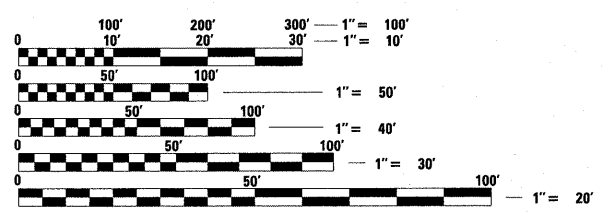
TRAFFIC DATA
2006 ADT = 9,600
POSTED SPEED LIMIT = 35-40 MPH



PROJECT ENDS STA. 58+15

OMISSION STA. 5+67 TO STA. 7+25
STA. 12+13 TO STA. 17+74

PROJECT BEGINS STA. 4+00



FULL SIZE PLANS HAVE BEEN PREPARED USING STANDARD ENGINEERING SCALES. REDUCED SIZED PLANS WILL NOT CONFORM TO STANDARD SCALES. IN MAKING MEASUREMENTS ON REDUCED PLANS, THE ABOVE SCALES MAY BE USED.

C.U.A.N.
CHICAGO UTILITY ALERT NETWORK
(312) 744-7000

PROJECT ENGINEER KARI SMITH (847) 705-4437
PROJECT MANAGER KEN ENG (847) 705-4247

GROSS LENGTH OF PROJECT = 5,415 LINEAL FEET = 1.025 MILE
NET LENGTH OF PROJECT = 4,696 LINEAL FEET = 0.889 MILE

CONTRACT NO. 60M35

STATE OF ILLINOIS
DEPARTMENT OF TRANSPORTATION
DIVISION OF HIGHWAYS

SUBMITTED MAY 16, 20 11

Diane M. O'Keefe DEPUTY DIRECTOR OF HIGHWAYS, REGION ENGINEER

July 1, 20 11
Scott E. Stett ENGINEER OF DESIGN AND ENVIRONMENT

July 1, 20 11
Christine M. Reed DIRECTOR OF HIGHWAYS, CHIEF ENGINEER

PRINTED BY THE AUTHORITY OF THE STATE OF ILLINOIS