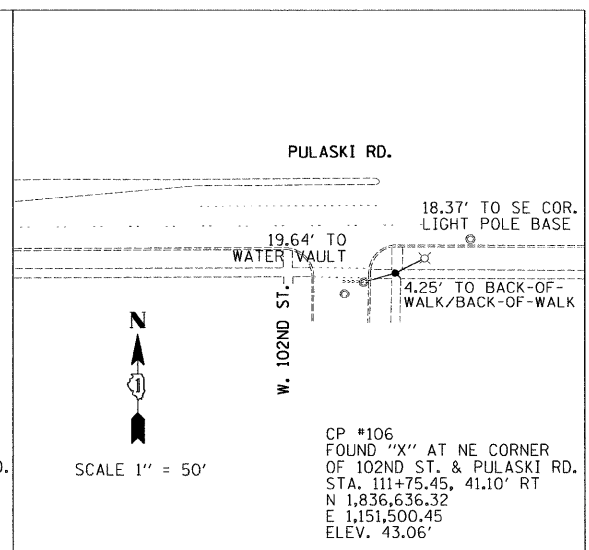
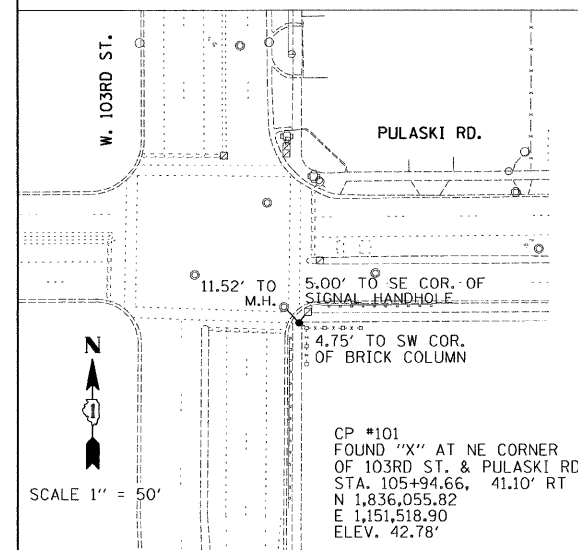
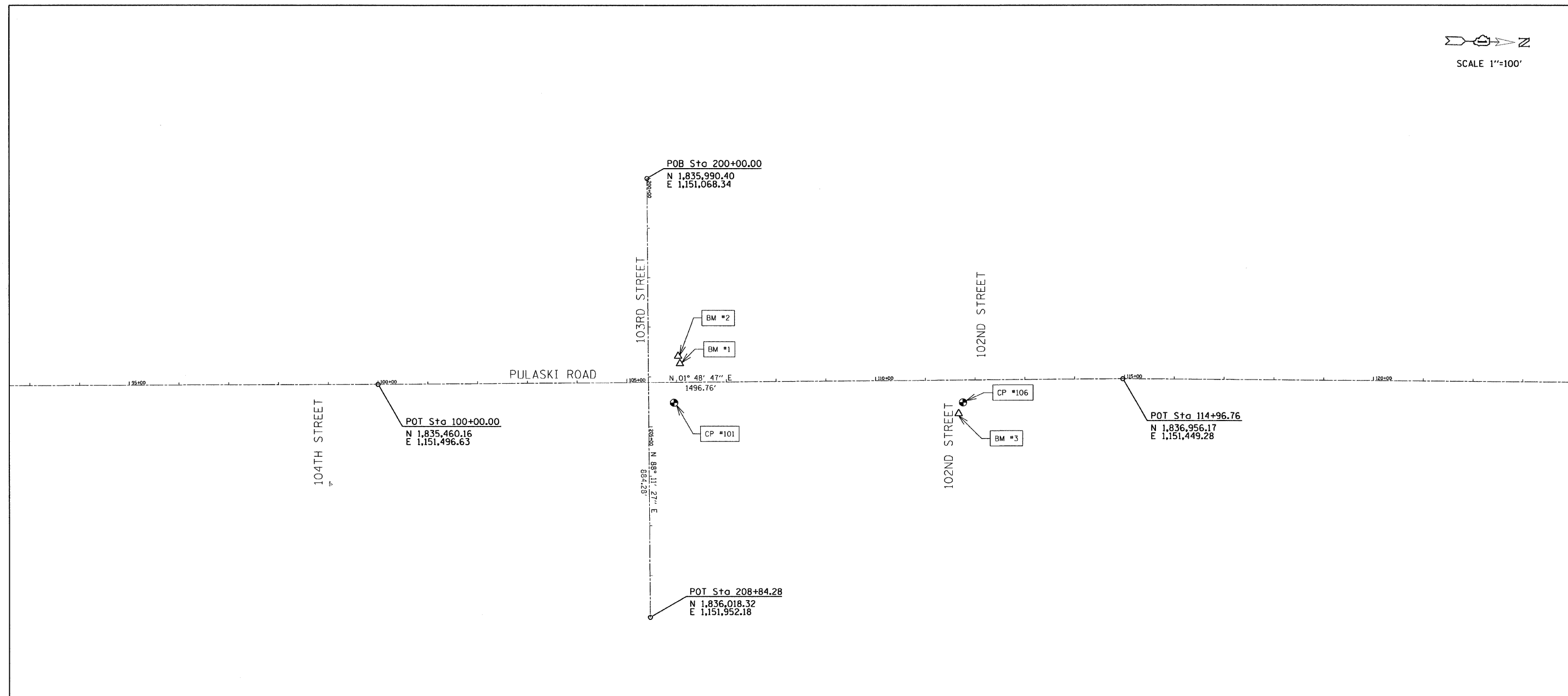


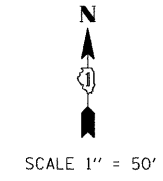
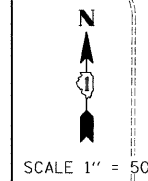


SCALE 1"=100'



ALIGNMENT COORDINATES - PULASKI ROAD			
PULASKI	STATION	N	E
POB	100+00.00	1,835,460.16	1,151,496.63
POT	114+96.76	1,836,956.17	1,151,449.28

ALIGNMENT COORDINATES - 103RD STREET			
103RD	STATION	N	E
POB	200+00.00	1,835,990.40	1,151,068.34
POT	208+84.28	1,836,018.32	1,151,952.18



BENCHMARK #1
ELEV. 44.08'
NW FLANGE BOLT ON HYDRANT AT NW CORNER OF 103RD ST. & PULASKI RD. STA. 106+07.02, 38.57' LT.

BENCHMARK #2
ELEV. 45.16'
NE BOLT ON STEEL BASE FOR MOBIL SIGN AT THE NW CORNER OF 103RD ST. & PULASKI RD. STA. 106+03.29, 50.95' LT.

BENCHMARK #3
ELEV. 44.17'
WESTERN-MOST NW FLANGE BOLT ON HYDRANT AT THE NE CORNER OF 103RD ST. & PULASKI RD. STA. 112+73.89, 63.27' RT.

FILE NAME =	USER NAME = .USER.	DESIGNED - EF	REVISED -
#FILE#		DRAWN - EF	REVISED -
	PLOT SCALE = 100.0000' / IN.	CHECKED - RS	REVISED -
	PLOT DATE = 6/2/2011	DATE - 06-02-2011	REVISED -

**STATE OF ILLINOIS
DEPARTMENT OF TRANSPORTATION**

**PULASKI ROAD AT 103rd STREET
ALIGNMENT, TIES AND BENCHMARKS**

SCALE: NTS SHEET NO. 1 OF 1 SHEETS STA. TO STA.

F.A.U. RTE.	SECTION	COUNTY	TOTAL SHEETS	SHEET NO.
3778	2011-022-T	COOK	34	5
CONTRACT NO. 60P21				
ILLINOIS FED. AID PROJECT				